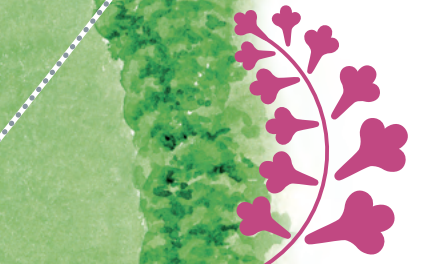


Glorious wooded parkland and rambling walks ready for you to explore.



Key

P Parking	Shop
Visitor Reception	Place to picnic
Tea Room	Play area
Toilets	Coach turning bay

1 Donkey Wheel
2 The Great Tower
3 Cromwellian Building
4 White Garden

5 Cherry Garden
6 Rose Garden
7 Kitchen Garden
8 Maze

9 Orchard
10 Moon Bridge
11 The Ice House
12 Prospect Mound

Walk start/finish

Parkland Walks

..... Estate walk
1.75 miles / 60mins
It's stile free and a walk through classic Chiltern beech woodlands.

..... Sir Felix's gentle path
1.5 miles / 40mins
This route goes through the woodland and across our landscaped parkland. Stile-free.