



National  
Trust

# About the house at Calke Abbey



Easy read booklet



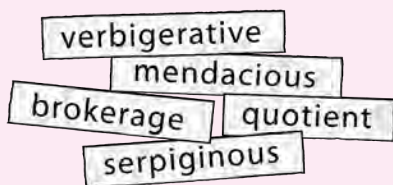
This is an Easy Read version of some information. It has words and pictures.



You might want help to read this booklet. You can ask someone to help you.

# words

Some words are **black and bold**. This means we think they are difficult words.



**Black and bold** words are thicker and darker. We explain what they mean in a box like this.



Some words are **bright blue**. These are links to websites or email addresses. You can click on these links on a computer.

# Who we are and what we do



We are the **National Trust**.



We look after lots of old buildings and gardens in England, Wales and Northern Ireland.



We also look after some old woodlands and coastline.

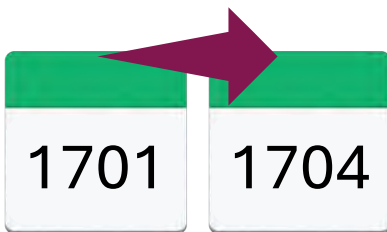


In this booklet we tell you about a house we look after called **Calke Abbey**.

# About Calke Abbey



Calke Abbey is in Derbyshire in England.



The House was rebuilt from 1701 to 1704.



The Harpur family and Harpur Crewe family lived there.



This booklet tells you how the families used each room in the house.

# The Entrance Hall



An **entrance hall** is a hallway that goes from the front door to the rest of the house.



The Entrance Hall had to be built again in the 1840s.



This is because the staircase near it was taken down.

# The Caricature Room



A **caricature** is a cartoon of a someone's face that is funny but still looks like them.



The Caricature Room has 136 caricatures in it. Henry Harpur chose them.



In 1800 caricatures were **fashionable**.



**Fashionable** means lots of people liked them and wanted to have them.

# The Butler's Pantry



A **butler** is in charge of running the kitchen and making sure guests of the house are happy.



A **pantry** is a room or cupboard in a kitchen. It is used to keep food or items like plates, bowls and dishes.



The Butler's Pantry was built in 1794 but now has some new lighting and kitchen counters.



Kitchen staff used the lift by the fireplace to send up food.

# The Dining Room



A **dining room** is a room where people eat meals together.



The Harpur family used the Dining Room to eat with guests.



The Dining Room is decorated to look the same as it did in the 1700s.



It has a type of art on the walls called **Italianate wall cameos**.

**Italianate wall cameos** come from Italy. They show pictures of Greece and Rome from around 2000 years ago.

# The Breakfast Room



A **breakfast room** is a room where people eat breakfast.



The Harpur family used the Breakfast Room for family meals.



Doors join the Breakfast Room to the **Saloon** and Dining Room.



A **Saloon** is a room to be with guests.

# The Saloon



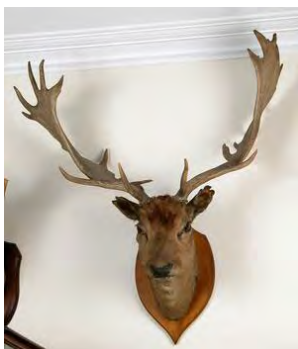
The Saloon has lots of objects found in nature like **taxidermy**, shells, insects, plants and eggs.



**Taxidermy** is when an animal dies and the body is kept so we can learn about their bodies.



There used to be a lot more objects in the house than what you can see today.



In 1840, nearly 400 taxidermy bodies were kept in the house.

# The Drawing Room



A **drawing room** is a room where families spend time with their guests before and after dinner. They might talk, read or play music.



Lady Crewe decorated the Drawing Room from 1855 to 1856.



The chairs were covered in a yellow fabric to match the silk curtains, and the **gilding** was done again.



**Gilding** is a gold colour powder or paint that is put onto walls and furniture.

# The Library



A **library** is a room where people keep and read books.



The Harpur Crewe family had more than 4,000 books.



The books show us what they were interested in.



The Library also has notes and pieces of writing that show how they lived.

# The Boudoir



A **boudoir** is a private room for a women to sit and be alone. It can also be their bedroom or a place to get dressed.



The room was used as boudoir from 1821.



It has over 600 objects from all over the world, and local pottery.



It has a secret door called a jib door that servants used to come into the room.

# The Yellow Room



The Yellow Room was a bedroom.



It was only used for important guests.



In the 1950s the bedroom was closed and no one used it.

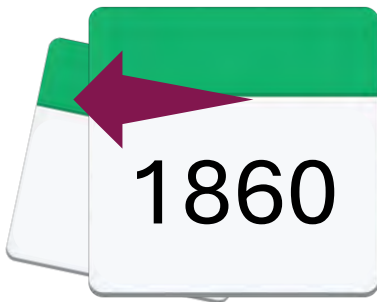


This is when the family lost a lot of their money.

# The Schoolroom



The Schoolroom was where the children had their lessons from 1860.



Before 1860 the room was used as a bedroom.



A **governess** would teach the children.

A **governess** is a woman who teaches children in their home.



Many of the children's toys, books and clothes are still in the house today.

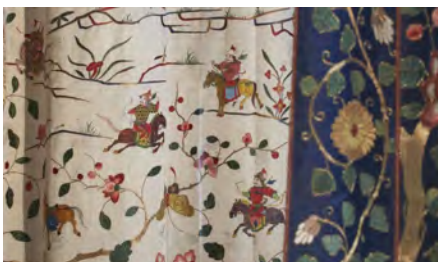
# The State Bed



A **state bed** is an expensive bed that has lots of decorations.



The State Bed is decorated in an expensive soft material called silk.



These silks were known for being beautiful and very good quality.



The silks were probably given to Henry Harpur and Caroline Manners when they got married in 1734.

# Sir Vauncey's Bedroom



Sir Vauncey Harpur Crewe really liked nature and collecting objects found in nature.



His bedroom looks the same today as it did when he was a child.



Sir Vauncey Harpur Crewe was a **Baronet**.



**Baronet** is a title that means someone can be called Sir.

# Nurseries



A **nursery** is a room for children and babies to sleep, eat and play.



The children of two families used these nurseries.

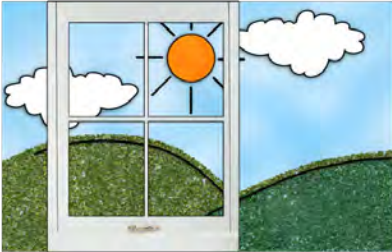


They ate and played in the Day Nursery.



They slept in the room next door.

# Lady Crewe's Room



Lady Georgiana Crewe sat in this room in the morning to enjoy the sun.



She could see the park from this room.



In the 1950s and 1960s this room was a bedroom for Charles Harpur Crewe.

# Bird Lobby



Sir Vauncey put his taxidermy and **taxidermy dioramas** in this room.



**Taxidermy dioramas** are when taxidermy are put in spaces that are built to look like the part of the world they used to live in. A taxidermy bird might be put in a fake tree.



Taxidermy dioramas were first made in the 1800s.



They were a new way to show how and where animals used to live.

# Gardner Wilkson Library



Sir John Gardner Wilkison was a **scholar** who knew a lot of Egypt.



A **scholar** is someone who knows a lot about a subject because they spend a long time learning about it.



His library is full of books about **archaeology**, languages and history.



**Archaeology** is when people look at old materials like buildings and clothes to learn about people who lived a long time ago.

# Oak bedroom



Henry Crewe and his wife Lady Crewe used the Oak Bedroom.



Doors join the Oak Bedroom to two smaller rooms on each side.



These two smaller rooms might have been used by Lady Crewe for washing and dressing.



The rooms were not used in the 1900s.

# The Kitchen



The Kitchen used to be very busy but in the 1920s it stopped being used as a kitchen.



In the 1920's it was just used to store items from the house that the families were not using.



The stairs in the Kitchen go to the cook's room.



This is the room where the cook wrote her menus.

# Servant's Hall



A **servant's hall** is a room near the kitchen where servants could eat, talk and sit.



Around 20 to 30 servants worked in Calke House.



They did tasks like cleaning, cooking, washing and dressing.



The Servant's Hall was not used after Sir Vauncey died in 1924.

# The Courtyard



Before the house at Calke Abbey was built, a man called John Preste paid to use the land in the 1530s.



He built a **Tudor house** on the land.



A **Tudor house** is a type of house built between 1485 to 1603 that has large chimneys, dark wooden frames and a steep roof.



You can still see the archway of the Tudor house in the Courtyard.

# The Brewhouse



A **brewhouse** is a place where alcoholic drinks like beer and ale are made.



Beer and ale were made each week at Calke Abbey.