

Dunwich Heath Access Statement

Coastguard Cottages

Minsmere Road

Dunwich

Suffolk

IP17 3DJ

T: 01728 648501

E: dunwichheath@nationaltrust.org.uk

Introduction

- An area of heathland and coast with numerous undulating footpaths
- A dog friendly property with requirements for dogs to be kept on leads at certain times of the year. Assistance dogs welcome throughout the site
- Mobile phone reception can be limited on some areas of the heath
- In an emergency call 999
- Staff are on site 363 days of the year, but visitor facilities are seasonal – please see the website for detailed opening times
- We do not have manual wheelchairs to borrow

Arrival & Parking Facilities

- Follow the brown signs to Dunwich Heath, drive 1 mile and head towards the white cottages
- The road is flat and even but has 5 speed bumps
- There are four spaces designated for blue badge holders situated on the south side of the cottages. Turn left past the gate post and they will be found directly on your left. We ask all visitors to respect social distancing when parking.
- There is also one designated viewing space overlooking the beach. This has a one-hour time limit to avoid people blocking the space
- The car park surface is gravel and uneven in some areas
- Parking is free for Blue Badge holders at all times; please leave your badge on view.

WCs

- 45 metres from parking area
- Radar key accessible – own key essential
- One unisex accessible toilet with left hand transfer
- 170cm length x 202cm width
- 87cm door width
- Alarm pull on right of toilet, pull reaches to floor level
- No adult changing facilities
- Stone flooring
- A slow closer is fitted to the door
- Nappy bin, sanitary waste and general waste bin
- The toilet has an automatic hand dryer and paper towels
- Main toilet block contains benches and baby changing facilities

Internal Space

Tearoom

- Takeaway only
- One way system in place
- 46 metres from parking area
- 87cm width door, 2cm ridge to pass over
- Stone floor
- Lighting is by LED bulbs, no areas are overly bright.
- Hearing induction loops are positioned at the till points in the tea room and kiosk, and also in the Visitor Information Centre.

Outside Visitor Space

- Picnic benches with many wheelchair friendly options. Benches are currently spaced to allow social distancing
- Nearest wheelchair friendly bench 20 metres from parking area
- Located on mud so may be slippery when wet
- Children's play area adjacent to picnic benches
- Temporary litter bins are positioned nearby

Access Vehicles

Self-driven

- 2021 – pre-booking essential, available when the Visitor Welcome hut is open, bookable between 10:30 & 15:00 (call 01728 648501)
- Three routes to follow - new visitors to Dunwich will start on the beginner route
- Users are provided with instructions
- Route map is provided
- A declaration form will need to be signed before use
- Areas not suitable for mobility vehicles are clearly signposted

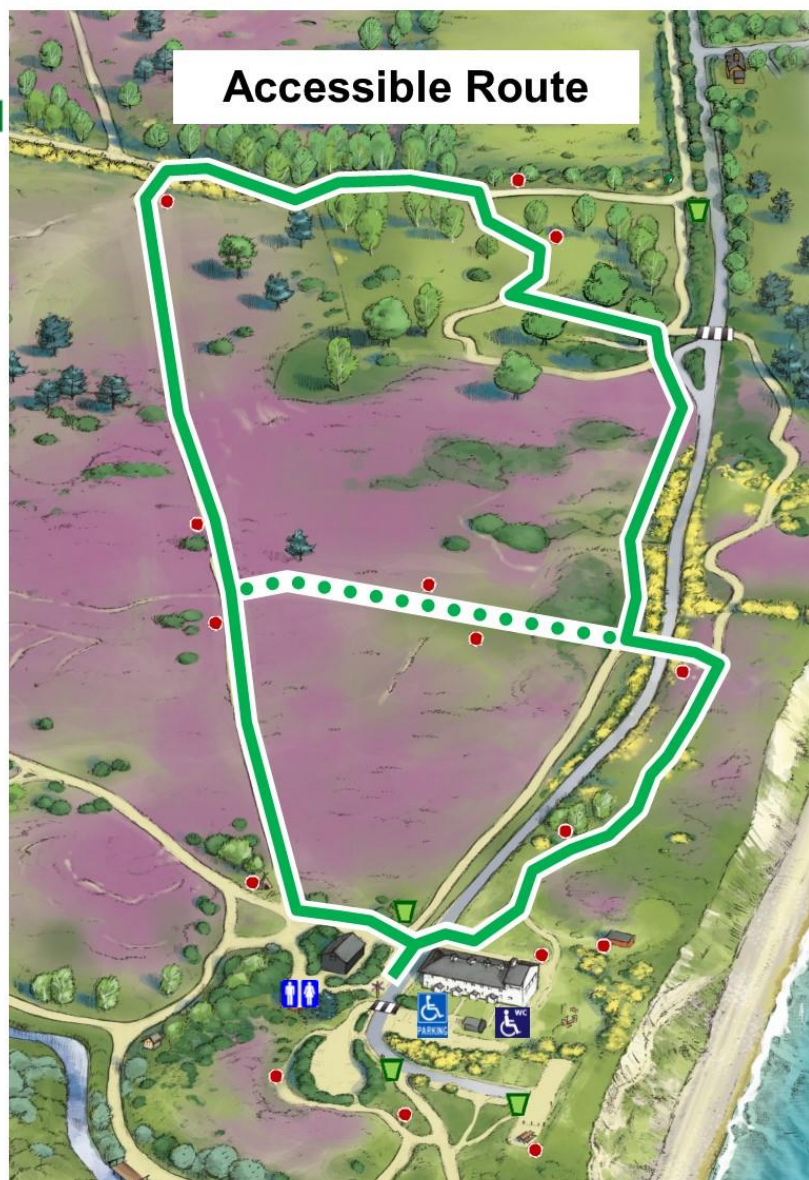
Chauffeured Service – Pre-booking essential due to driver availability (call 01728 648501)

- A multi-seater vehicle which carries up to five passengers, or one passenger in their own wheelchair and three other passengers








We do not recommend using privately owned vehicles on the footpaths due to the terrain.

Accessible Route

- Two accessible routes are available, follow white arrows on green squares
- A braille map is available
- Route 1 is 1.5 miles and will take around 60 minutes at a moderate pace
- Route 2 is 0.75 miles and will take around 30 minutes at a moderate pace
- Please see the route map below or the larger versions on display on the property
- The footpaths are of mixed terrain, sand, gravel, mud, some steps. Staff can advise of any adverse conditions due to weather
- Benches are located every 100 to 200 metres and shown on maps
- Bench seat height is 40-50cms
- Depending on weather conditions there may be puddles and mud along the route – advice can be provided by calling the property.



Map Key

-  1.5 mile accessible route (1hr)
-  0.75 mile shortcut (30mins)
-  Dog poo bin locations
-   Toilets
-  Parking
-  Benches—100-200m apart, 50cm height

Follow the white arrows on green squares at path junctions, can be followed either direction.



Please note:

Be aware of natural trip hazards along the paths like tree roots and debris.

Other NT walking routes are waymarked by coloured arrows on circles, National trails are also waymarked. No open fires or BBQs and please follow the Countryside Code.

Dunwich Heath Map

