

## Drovers Estate Access Statement

Drovers estate, Singleton, West Sussex

T: 01243 814730

E: [southdownscentral@nationaltrust.org.uk](mailto:southdownscentral@nationaltrust.org.uk)

### Introduction

Drovers estate is spread out on either side of the A286 just north of Singleton. It includes woodland and commercial farmland with chalk grassland at Hat Hill. There are hedgerows and wooded shaws linking the woodlands creating a diverse patchwork of habitats. There are pheasant pens in the woods as part of the sporting interests on the estate. A section of disused railway line includes a tunnel, which is a Site of Special Scientific Interest due to it being an overwintering roost site for a significant number of bat species. The footpaths are popular with local dog walkers. Livestock are present on the site so dog walkers should be cautious and keep dogs on leads when near livestock.

**NB** - Mobile phone reception is not very good across the site. In an emergency, please make contact on the phone number above as soon as you are able.

### Arrival & Parking Facilities

There are no car parks at Drover's estate. To access the public footpaths and permissive routes people need to park in Singleton village and walk to the cricket pavilion just off the A286 between The Partridge pub and the Weald and Downland museum. There is a small track beside some houses and a waymarker on the opposite side of the road leading to a couple of fields and an omega sign marking the entrance to Drover's. There are a couple of gates to negotiate. There are several other public footpaths providing access onto the estate, including from the A286, but no designated parking area. The number 60 bus runs between Chichester and Midhurst and stops in the village of Singleton as well as further up the estate along the A286 at the Drovers stop. The Drovers stop provides better access into the heart of the estate. There are no toilets or refreshment facilities available on Drover's itself but there is a café (closed Sundays) and a pub in Singleton.

### Trails

There are public footpaths waymarked around Drover's and a waymarked permissive route which creates a scenic walk amongst the rolling hills of the South Downs. None of the routes are surfaced and there are several stiles and some gradients. This route is described on our downloadable walk Hat Hill to Levin Down. For further information about Drover's Estate and the downloadable walk please see our website

Further information about trails around the property is available on our main website.

<https://www.nationaltrust.org.uk/drovers-estate>

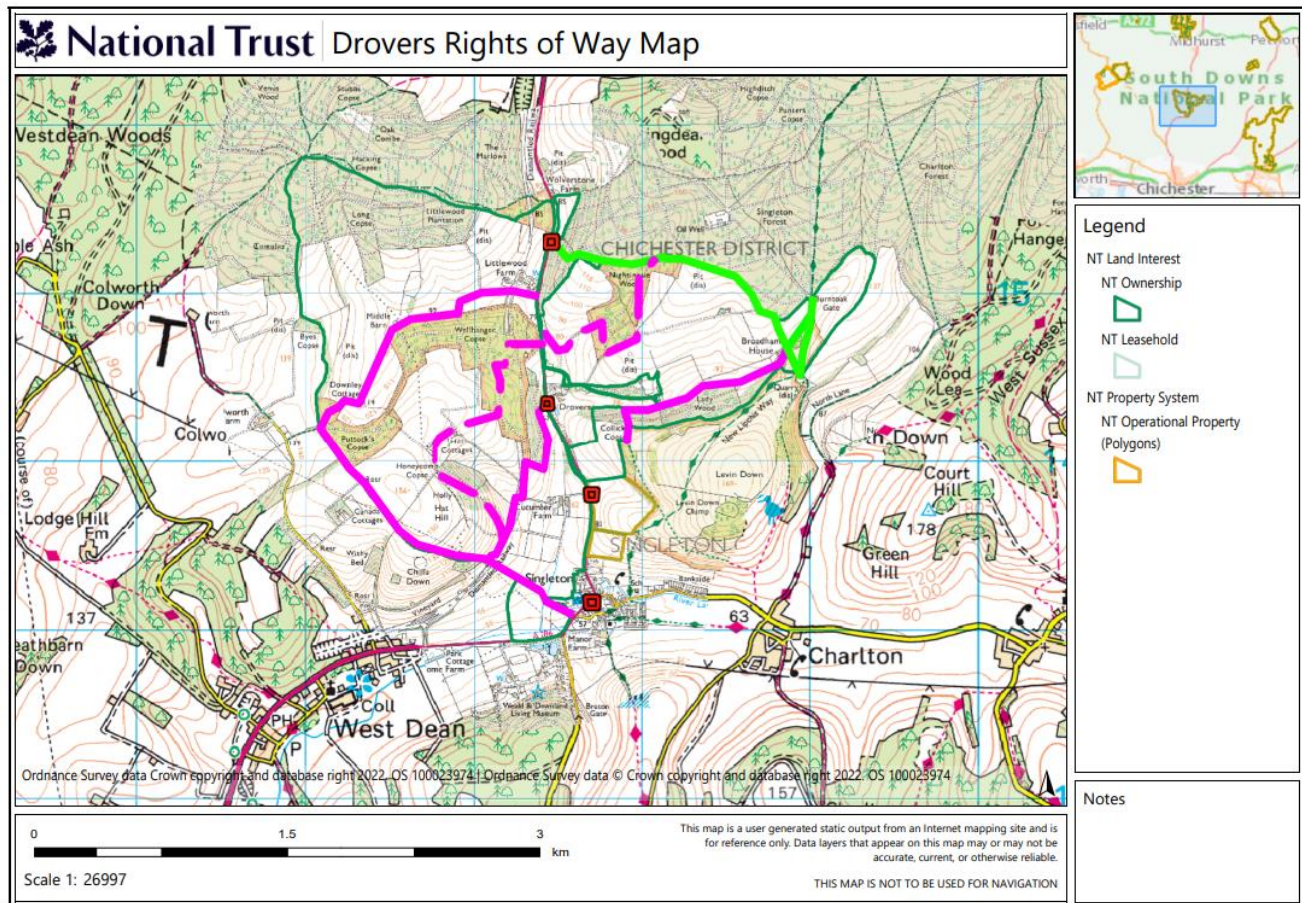
## Contact details for more information

T: 01243 814730

E: [southdownscentral@nationaltrust.org.uk](mailto:southdownscentral@nationaltrust.org.uk)

**Date: May 2022**

## Map



**Legend:**

Solid pink line = Footpath  
Pink dashed line = Permissive  
footpath  
Solid green line = Bridleway  
Red squares = Bus stops