

Mompesson House and Garden Access Statement

A Grade I listed building, Mompesson House is the largest and finest house on Chorister's Green, in the Cathedral Close. It is a perfect Queen Anne townhouse, built in 1701, with a limestone façade, symmetrical windows and elegant wrought-iron railings. The interior features beautiful mid-18th-century plasterwork, marble chimney pieces and light, airy rooms. The walled garden to the rear is bounded by the 14th-century Close wall and includes our Garden Tea-room.

Mompesson House
The Close
Salisbury
Wiltshire
SP1 2EL

T: 01722 335659

E: mompessonhouse@nationaltrust.org.uk



Introduction

1. There is reasonable mobile phone reception across the property.
2. Assistance dogs are welcome. There is a water bowl next to the railings in front of the Entrance Door which is refilled regularly or can be filled on request.
3. Fixed Induction loop available on ground floor at Visitor Reception Desk which is regularly checked. Upstairs rooms only accessible via a staircase.
4. There is a manual wheelchair available to use. If possible please ring to book before visit. There are also two walking sticks and a folding stool available to borrow during a visit.
5. Visitors can sit on all of the downstairs window seats and any of the chairs in the Library.
6. Due to small rooms, visitors are asked to hand over large bags at Visitor Reception and are given a ticket for retrieval at the end of their visit.
7. Photography is allowed, without flash.
8. A pretty walled garden to the rear, with an uneven path, and an accessible toilet.

Arrival & Parking Facilities

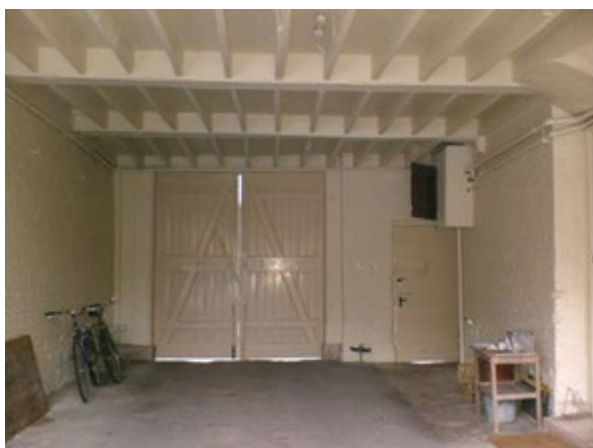
1. Follow the signs to the Cathedral, positioned around Salisbury.
2. There are no car parking facilities at this city-centre site but a drop off point is available just outside the property.
3. There are two spaces for Disabled Visitors right in front of the property, on a flat tarmac surface. Please ring the property beforehand if you require one of these spaces.
4. There is a 4 stepped approach to the House. A ramp without handrails is available, but an alternative level entrance is also available on request.
5. The entrance doorway opens inwards and is 1200mm wide. You will be welcomed by our Reception Assistant, who will assist you on your visit.



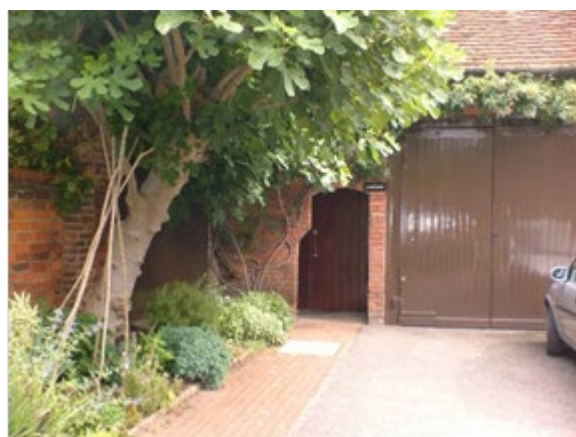
Main entrance door in to Visitor Reception



Entrance steps



Alternate level entrance and main exit



Courtyard and access to WCs

WCs

1. There is an accessible toilet in the courtyard next to the tea room, accessed through an archway, of 840mm extending to 1020mm width.
2. There is an emergency assistance alarm and baby changing facilities.
3. The accessible WC is a left hand transfer.
4. The WC is lit with automatic fluorescent lights.
5. Both WCs have automatic hand dryers and paper hand towels.
6. The accessible toilet has internal dimensions of 2070mm x 1530mm.



Entrance to WCs



Accessible WC

Visitor Reception – just inside the main front door of the house

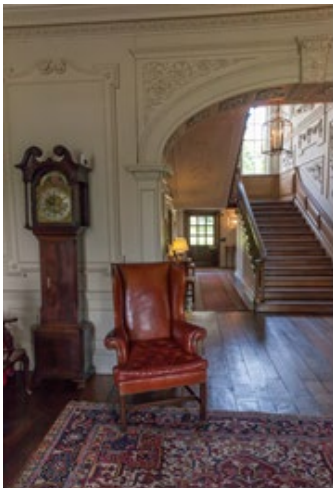
1. Wooden floor with a large carpet and underlay.
2. The entrance door is 1100mm wide and it open inwards. It is kept propped open throughout the day.
3. The main reception desk is 750mm in height and there is a lower section of 700mm. Staff can come round to talk to a visitor who cannot see over or reach up to the desk. There is a clipboard available for visitors to write on if they cannot reach the desk.
4. There is lots of natural light from two large windows and the open doorway. There is also a lantern with artificial fluorescent bulbs.
5. There are chairs available to sit on in the entrance hall, one with armrests.

House

1. The house has wooden floors throughout with carpeted areas and the occasional mat.
2. Lighting is low within the house but natural light and LED bulbs are present in the rooms.
3. There is 1 step down to the rear hall and garden exit.
4. There is 1 step up to the library.
5. The first floor is only accessible via the staircase. There are 13 steps, a mid way landing, and a further 13 steps. The staircase is quite wide, with a handrail on the left going up.
6. There is space to turn a wheelchair in all rooms, but it is quite tight in the library.

National Trust

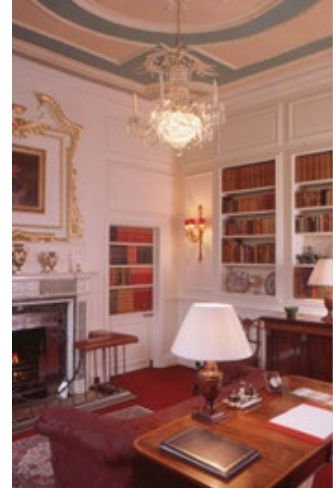
7. There are window seats available in the downstairs rooms.
8. Circulation around the property is generally quite easy though some corridors are a little narrow. Rooms that are open to the public usually inter-connect and doors are kept in the open position whilst the property is open.
9. There is space for a wheelchair to turn round easily in all of the downstairs rooms except for the Library, which is quite small.
10. Visitors are welcome to sit on any of the downstairs window seats and on any of the chairs in the Library.
11. There are volunteers in the rooms and staff carry out frequent walks round the house. The volunteers wear pendants which can be pressed to alert staff for assistance.
12. There are no WCs in the main house.
13. There are no guided tours.
14. There is a large print guide available from Visitor Reception and also a Braille guide.



Entrance Hall



Top of staircase



Library



Exit into garden

Catering

1. There is a small tea room in one corner of the garden.
2. There is outside seating available for 22 people, with cover provided over some of the tables and chairs. Inside seating is available for 24 visitors.
3. A 700mm wide ramp with no handrails is in place to enable access to the inside part of the tea room. The edge of the ramp has been highlighted and a reasonable gradient has been achieved. The ramp can be easily removed if needed; there is one step of 120mm.
4. The doors open inwards and both of them together measure 1200mm in width. This is kept open on warm days but staff are available to assist if they are closed on colder days.
5. The counter height is 900mm but visitors can be seated if they experience difficulty queuing and staff will then assist them.
6. There is not much circulation space between tables and chairs in the inside area, but the tables are not fixed, so provision can be made to make more space if needed.
7. One doubled handled mug and straws are available.
8. Menus are available in standard print but there is no induction loop available.



Ramp and doorway



View of tea room

Garden

1. Mompesson has a small walled garden providing a pleasant place to rest, hear the Cathedral bells and enjoy the plants and shrubs throughout the various seasons.
2. There is a flat route from the house into garden on request. All other routes have between one and three steps with no hand-rails.
3. Paths are stone slabs with some uneven areas. These can sometimes be slippery.
4. There are several benches with arm rests.



Garden path



Lawn in centre of garden



Wooden bench



Water fountain



Flat route from the garden to the exit/entrance, steps up and down to the rear path

Second-hand bookshop

1. There is a small second-hand bookshop in the courtyard.
2. There are 2 steps to enter the bookshop marked by 2 stone lions on either side of the door; ramps are available if needed and staff are happy to assist.
3. The door opens inwards and is always kept open. The doorway is 920mm wide.
4. The majority of the display units are around the edge of the shop and fixed to the wall; the tables in the middle are not fixed and could be moved if needed.
5. The height of the till point is 900mm and staff are happy to assist. You may need to pay for books by card at Visitor Reception.



Entrance to the bookshop

Bookshop

Contact details for more information

T: 01722 335659

E: mompessonhouse@nationaltrust.org.uk

April 2023



National Trust

Map

