

Wenlock Edge access statement

Introduction

Wenlock Edge is a narrow limestone escarpment that runs for 18 miles from Craven Arms to Ironbridge, the National Trust owns 8.5 miles of this stretch from Much Wenlock to Roman Bank. Located in the Shropshire Hills Area of Outstanding Natural Beauty (AONB) the property is mostly semi-natural ancient woodland with fragments of flower-rich limestone grasslands along the crest as well as internationally important sites for geology, making the area an important Site of Special Scientific Interest (SSSI). Along Wenlock Edge you'll see evidence of its old industrial use, with old quarries and lime kilns along the way.

Parking and facilities

Wenlock Edge is a countryside property with two small free to use car parks (Presthope and Much Wenlock) signposted with brown National Trust signs, and there are numerous laybys located along the B4371. The Presthope car park is open 24 hours a day and the Much Wenlock car park is open dawn till dusk. The car park surfaces are hard standing and in Presthope carpark the spaces are not marked out whereas in Much Wenlock car park spaces are marked out along one side. The Much Wenlock car park is the largest of the two. There are no catering, retail or toilet facilities on site and the property office is also not located on site (it is a 20-minute drive away at Carding Mill Valley). There are a few benches around the Lime kiln walk and Jenny Wind walk otherwise there is very little seating. You can also access Wenlock Edge from the National Trust car park at nearby Wilderhope Manor, please see website for details: <https://www.nationaltrust.org.uk/wilderhope-manor>

Footpaths and bridleways

There are a myriad of footpaths and bridleways along the Wenlock Edge including five waymarked trails starting from the two car parks. One of the waymarked trails incorporates the natural play area which includes balance beams, a seesaw and more objects made from wood. As most of the property is on the scarp slope the paths which criss-cross the Edge are steep and as the paths and bridleways are set within woodland many are uneven with tree roots exposed in places. Some paths are undulating as the landscape has been quarried and worked historically and there are some steps on the Lime kiln and Lea Quarry walks which start at the Presthope car park. The footpaths off the car parks are a mix of loose stone covering and bare rock/earth. Some have drainage channels crossing them. The Presthope walk which starts from Presthope car park is the only waymarked trail suitable for pushchairs, wheelchairs and mobility scooters. The routes go from 300 meters to 5.5km in length.

Livestock

We have a flock of Hebridean sheep which we move between different meadows. Two areas in which they graze are fenced off and there is no public access, but the public can see into them. The other meadow does have a public footpath running through it and so dogs need to be kept under close control and in sight in this location. There are also wild deer, foxes and badgers throughout the woodland and so dogs should be kept under control and on paths throughout the property. All dogs are welcome, including Assistance Dogs.

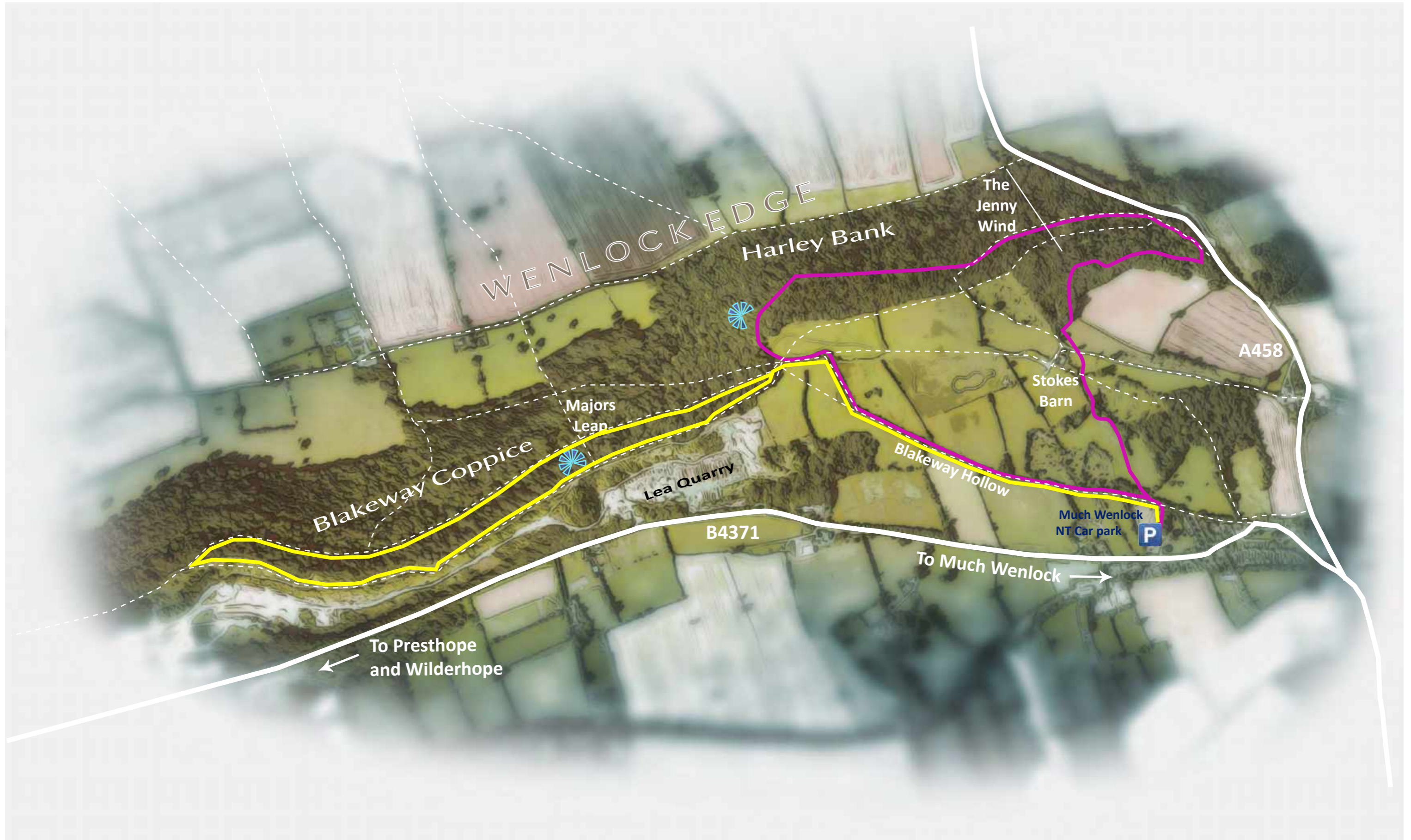
General

Mobile phone reception varies greatly across the site. In an emergency call the emergency services directly.

Shropshire Hills Property Office
Carding Mill Valley
Church Stretton
SY6 6JG

Contact details for more information:
T: 01694 725000
E: wenlockedge@nationaltrust.org.uk





WENLOCK EDGE

Harley Bank

The Jenny Wind

A458

Stokes Barn

Majors Lean

Lea Quarry

Blakeway Hollow

Much Wenlock NT Car park

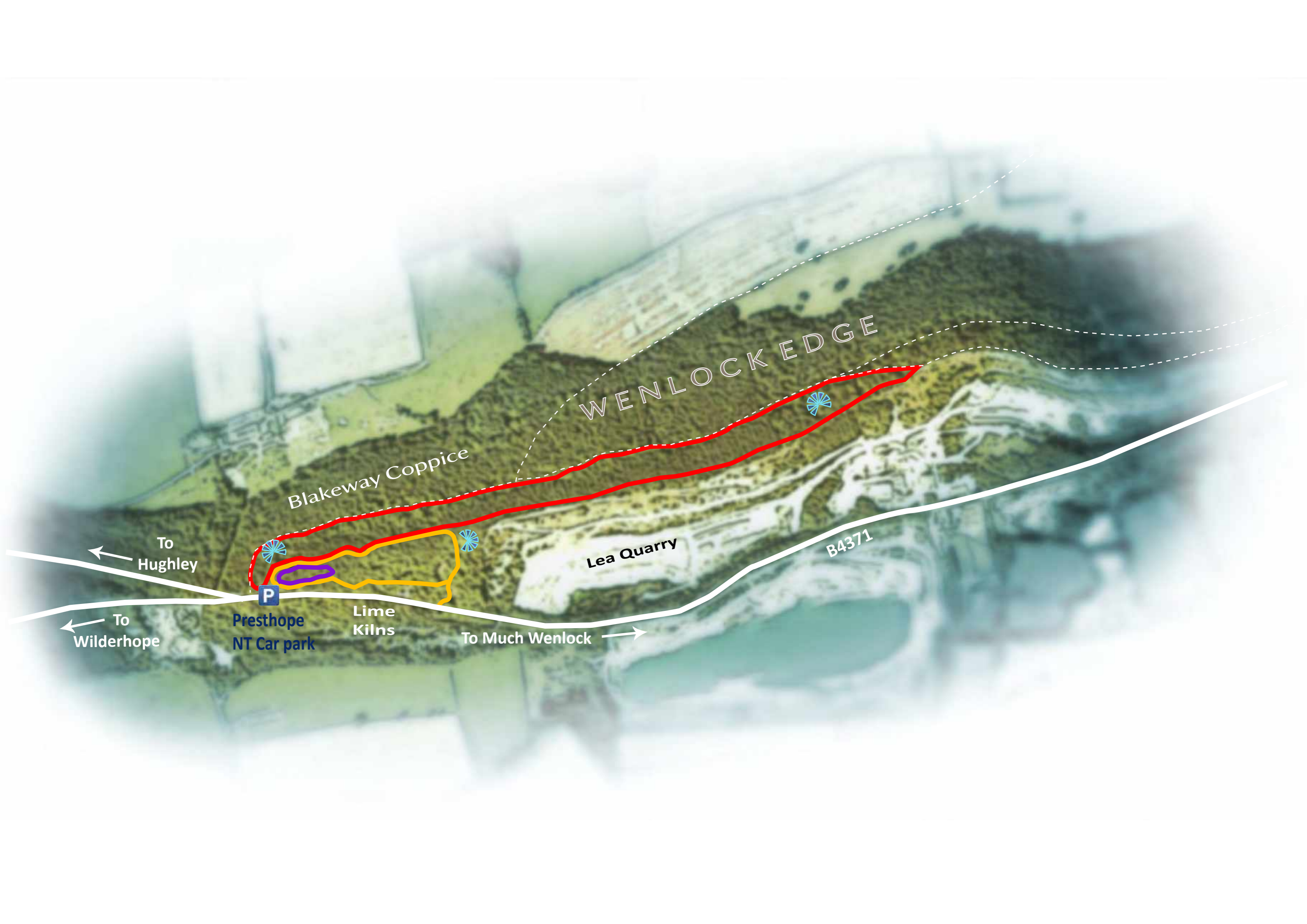


B4371

To Presthope and Wilderhope

To Much Wenlock





WENLOCK EDGE

Blakeway Coppice

Lea Quarry

B4371

To Hughley

To Wilderhope

P
Presthope NT Car park

Lime Kilns

To Much Wenlock