

Lodge Park Access Statement

Lodge Park, Aldsworth, nr Cheltenham, Gloucestershire, GL54 3PP

T: 01451 844130

E: lodgepark@nationaltrust.org.uk



Introduction –

1. Lodge Park is a 17th century grandstand, surrounded by flat lawn. The building is arranged over two floors, with access to the balcony and roof. There is a walk through the grounds which includes a woodland area, and a hilly section through the Bridgeman landscape.
2. Mobile phone reception is generally acceptable on the property. The number for the property is 01451 844130.
3. Assistance dogs are welcome in both the grounds and the building. Other dogs are welcome in the grounds but must be kept on a lead at all times.
4. There are a lot of steps and stairs in the building. Wheelchairs can access the Entrance Hall and the café. However, there is no wheelchair access to the first floor.
5. The lighting throughout the building is mostly LED. Some standard lightbulbs are still being used. There is no fluorescent lighting.
6. Chairs which are not to be sat on by visitors are indicated by teasels on the seat (please see photograph below). If visitors need to sit staff or volunteers can show them to seats which can be used.



Arrival & Parking Facilities

- There are brown signs for Lodge Park from the A40 just over 1 mile from the site. The entrance to the property is on the right as you approach.
- The car park is a small open area with a flat compacted surface.
- The car park does not have marked spaces. Due to the limited opening hours, the visitor numbers are quite low and so there is usually space to park easily in the car park with the ability to leave space around and behind the car to get in and out easily. Exceptions to this are Bank Holidays and during school holidays, particularly Easter, when the property is busier. The alternative parking options are along the grass to the side of the drive. If you are planning to visit on these days, please contact the property in advance to enable us to discuss parking options with you.
- The car park is directly to the side of the House. There is a pathway of approximately 28m from the car park to the House entrance. The path has quite a deep gravel surface.

WCs

- The block of visitor toilets is signed through a door at the end of the corridor beside the catering area.
- There are 3 wooden steps leading down from this door of approximately 170mm, 150mm and 170mm as you descend. There is a handrail to the left as you descend the steps.
- There is alternative access around the side of the House to the toilet block which avoids these steps. The route follows the gravel path in front of the House and around the side closest to the car park. There is a gate into the area beside the toilet block which is approximately 840mm wide. The route through the gate is firm and has a gentle slope.
- The entrance to the toilet block is up a 70mm step.

National Trust

- The door here opens outwards and is over 1000mm wide. The door is held open on a hook on open days.
- The block contains two cubicles, one male and one female. It also contains the accessible WC.
- The accessible WC has an outward opening door. The room is 1.5m x 2.5m. The toilet is left-hand transfer. There is also a baby changing table to the right-hand side as you enter. There are hand towels to use and no automatic hand-drier. The lighting is a standard bulb. The switch is operated by touch and is on a long-lasting timer.

House

- There is no separate visitor reception building so all visitors should make their way to the House entrance.
- The entrance is over 1400mm wide when the door is fully open.
- The entrance door opens manually. In the warmer months, the door is left open but staff and volunteers will open it for visitors as they arrive if the weather is wet or windy.
- There are two steps to the entrance, one approximately 130mm and the second 80mm. A portable ramp is available to use. Staff and volunteers are able to see visitors approaching and are able to put the ramp in place for anyone who needs it as they arrive. The ramp is 750mm wide and 2m long. The gradient is approximately 1:9.



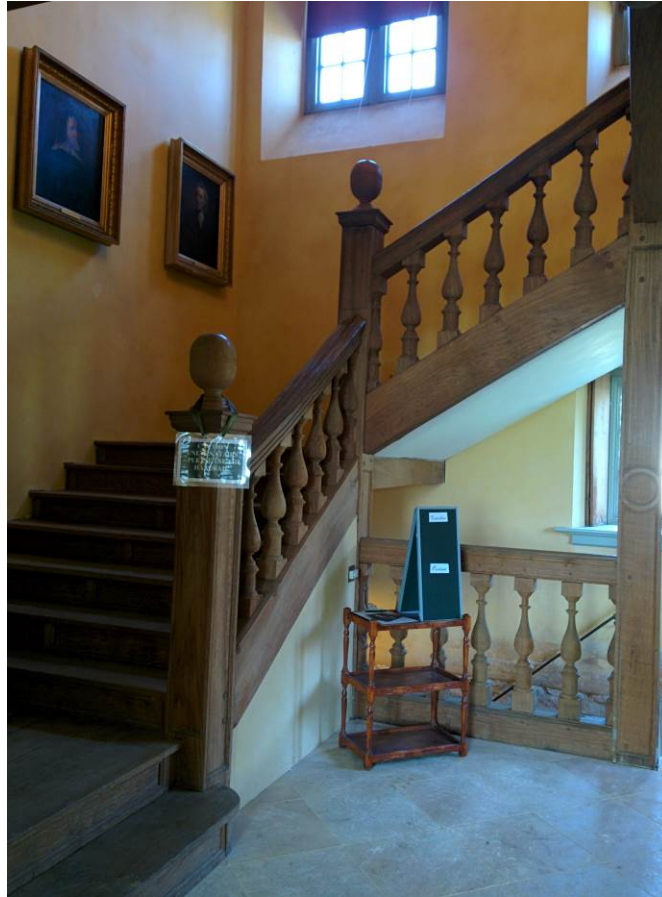
- The entrance hall is a large room and has a high ceiling. There are minimal soft furnishings in this area and there are portraits hung around the walls. The room is usually quite quiet but can become noisy on Bank Holidays and over Easter when more people tend to visit the property.
- The lighting here is LED. There are also lots of windows on the East wall which provide a good amount of natural light particularly in the morning.
- The visitor welcome table is 750mm high.

National Trust

- There is a portable induction loop available.
- There is one manual wheelchair available to loan.
- There are chairs without arms in the video room which can be brought out on request.
- There will be a volunteer in the Entrance Hall.



- **Video room** – This room is towards the rear of the entrance hall and is signed. The entrance here is approximately 930mm. This room is carpeted with hessian carpet and has several rows of seats without arms. The video lasts for about 10 minutes. It is not subtitled but a transcript will be in place for the new season. The room is wood-panelled.
- **Cellar** - The cellar steps lead down from the rear of the Entrance Hall. There are 10 steps each of about 200mm. There is a handrail to the right of the stairs which starts at the second step down. There is a sign to warn that the steps are steep.
- To the left at the bottom of these steps is a further small step of 90mm to a room with a very uneven floor. To the left is a step of a further 250mm step down to a wooden platform to view a stone room.
- **Upper floor** – The staircase to the upper floor is at the rear of the entrance hall.
- The staircase is wooden. There are two steps up of approximately 190mm high. These steps lead round to three further flights of wooden stairs. Each flight has 7 steps. The steps are slightly uneven from left to right and range from 170mm to 190mm in height. There is a large bannister to the right as you ascend. (Please see photo)



- The light hangs quite low from the ceiling and so the first few stairs at the top can be quite bright as you walk past the light.
- The stairs are 1800mm wide.
- There are portraits along the staircase.

- The upper room, 'Great Room' is large and has a wooden floor and a high ceiling.
- There are portraits on the walls but no other furnishings aside from eight chairs, two of which can be sat on. The others are indicated with a teasel.



- The lighting hangs quite low here so taller people might find the room quite bright as the lights are close to their eye-line.
- There are windows along the East facing wall which provide good natural daylight particularly in the morning.
- There is sometimes the opportunity to access the balcony – depending on the weather. The step up to the balcony is approximately 90mm.
- There is a volunteer in the Great Room.
- There is sometimes the opportunity to access the roof – depending on the weather. The roof is accessed by a spiral staircase of 26 steps, each having a rise of 200mm, the smallest steps have a width 820mm and a depth of 70mm. There is a rope handrail to the centre of the spiral (see photo).



- The lighting of the spiral staircase is LED wall sconces, at certain points these lights will be eye level. At the top of the staircase is a glazed cupola, allowing a lot of natural light.
- There are five stone steps between the cupola and the roof each step being 180mm high and 1000mm wide
- The roof has duckboards to be walked on – there are two changes in step.
- There is a Braille and large print short guide to the House.
- If a quiet space is required, please ask the nearest volunteer for help, volunteers will be in the Great Room, Entrance Hall and Café.
- The quietest area of the building is the video room. If necessary, we can stop the video and keep the room quiet.

Catering

- The catering area is towards the rear of the House over the first two steps of the staircase leading to the upper floor.
- The ramp used at the entrance can be used for these steps. The gradient is approximately 1:6
- The room is accessed from a corridor which contains the retail shelves.
- The doorway is over 800mm wide.
- There is a counter table which is 710mm high.
- An induction loop is available.
- There are hot and cold drinks and cakes and ice-cream available. There is a short menu in 16 point text available.
- There are three pedestal tables which are approximately 740mm high. The feet from the pedestal base extend out about halfway to the edge of the table.
- There is one larger square table which is 700mm high with 600mm width between the table legs.

National Trust

- There is also an additional unit of retail shelves here, selling longer-lasting edible products such as chocolate and preserves.
- There is a filter coffee machine and a kettle, but the room is usually quite quiet.
- There are drinking straws available.
- Volunteers can assist with serving visitors if it is difficult to stand in a queue.
- There are three accessible picnic tables available outdoors, close to the car park.
- There are 5 square tables in the courtyard next to the toilet block, each with 4 seats with arms.

Outdoors

- There is not a designed garden at Lodge Park but there are two outdoor offers close to the House.
- **A woodland walk** leads around the building, starting in the corner of the car park. The route is mostly covered by trees and has a natural earth and grass surface. This can become muddy in wet weather.



- There is a pet cemetery to the far side of the House over grassed paths which are level but have a bumpy surface.
- There is a walk through the **Bridgeman landscape** available, following the route in our walk leaflet there is a level grass surface, however there is long grass and often cattle or sheep are grazing. Areas of the walk are uneven. There is a steep valley in the landscape, however this is not on our walk route, and we do not encourage visitors to explore further.

Shepherd's Hut Second Hand Bookshop

- Our second-hand bookshop is in the Shepherd's Hut by the gate to the Bridgeman landscape. It is accessed over grass that can be muddy and the ground can be uneven, depending on the time of year.
- Access into the Hut is up several steep wooden steps, 80mm high, with a metal handrail on only one side.
- There is no artificial lighting inside the Shepherd's Hut. The only light comes through the door and a shutter on the rear of the Hut which can be opened if required.



Contact details for more information

T: 01451 844130

E: lodgepark@nationaltrust.org.uk

Date 04/05/2020