



National Trust

Wildlife at the National Trust

Which of these birds can you spot?

There's lots of wildlife at National Trust places but we've suggested a few locations where these species are more common.



Green woodpecker

Green on its upperparts with a paler belly, bright yellow rump and red on the top of its head. Nests in holes in trees.

Suggested locations: Belton House, Brockhampton Estate, Calke Abbey, Charlecote Park, Hardwick, Kedleston Hall, Longshaw, Packwood House

Song thrush

Found in woods, hedgerows, parks and gardens across the UK. Male sings from high atop a tree.

Suggested locations: All



Collared doves

Their nest is often just a flimsy pile of twigs in a tree or on a building.

Suggested locations: All



Robin

Adores live foods so often spotted in flower beds and vegetable patches.

Suggested locations: Any of our vegetable gardens, where the gardeners are regularly turning the soil and replanting.



Wren

A small brown bird with a remarkably loud voice for its size.

Suggested locations: All



Tree creeper

A small, very active, bird that lives in trees. It has a long, slender, down-curved bill.

Suggested locations: Belton House, Brockhampton Estate, Calke Abbey, Gunby Estate, Hardwick, Kedleston Hall, Longshaw, Wenlock Edge

Skylark

A small streaky brown bird with a small crest and a white-sided tail. Usually seen ascending to great heights whilst in continuous song.

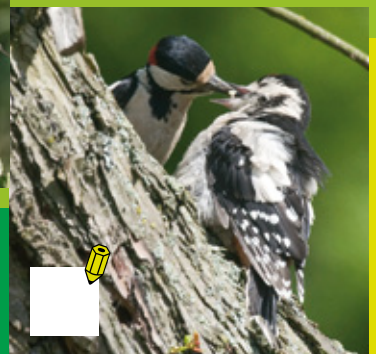
Suggested locations: Attingham Park, Clumber Park, Croome, Dovedale, Gunby Estate



Nuthatch

Look for them on the side of trees and branches in mature woods and established parkland. Usually work their way from the top to the bottom of a tree trunk seeking food.

Suggested locations: Attingham Park, Belton House, Baddesley Clinton, Clumber Park, Croome, Hardwick



Great spotted woodpecker

Striking black-and-white with a red rump. The male has a distinctive red patch on the back of the head.

Suggested locations: Attingham Park, Calke Abbey, Clent Hills, Dudmaston, Gunby Estate, Stoneywell



Don't forget to share your wildlife photos with us on Facebook, Twitter and Instagram #NTMidlands • www.nationaltrust.org.uk/midlands