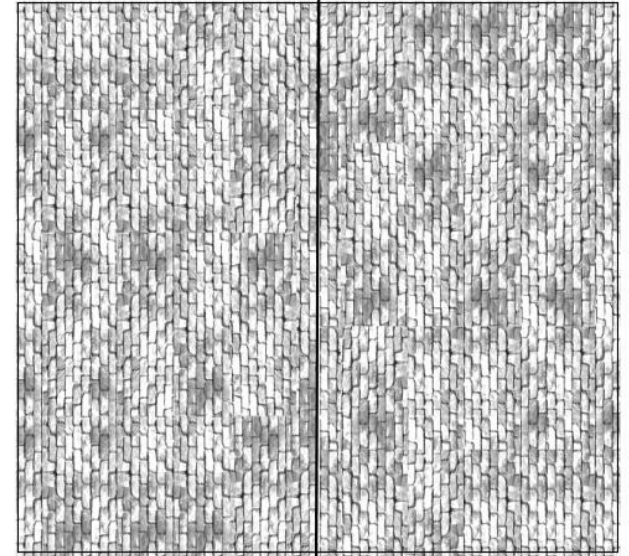


# Print Your Own Engine House to cut out and colour

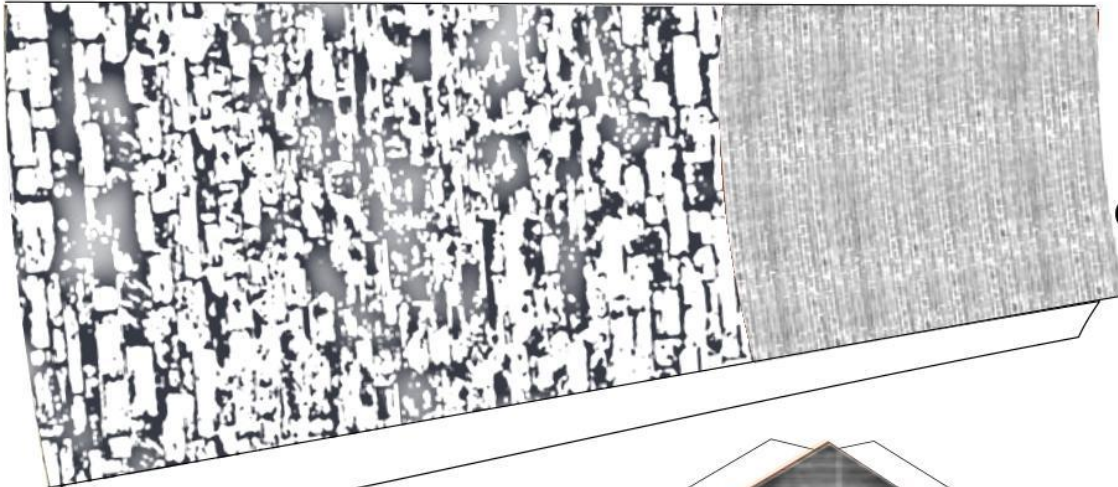
Use colour pens or crayons to colour your Engine House, then cut out all parts. Score and fold all the tabs and fold the walls together. To keep the engine house together for now, glue the little tab (1) to the top of the other wall. To roll the chimney, use a tube or dowel piece, about 13mm diameter. Roll the chimney round, making it into a taper. Glue along the strip and fix together. This can be tricky. Once dry, apply some glue to the angled tabs on the corners of the engine house and fix the chimney into the corner, making sure it fits tightly. This will fix all of the walls together. Cut a small corner of the roof where the chimney is and then glue the roof to the top. Once you have done this, your Engine House is finished!

*J & M Hockley © 2019*

Roof



Chimney



Fold

Fold

Fold

Engine House

Fold

Fold

1

