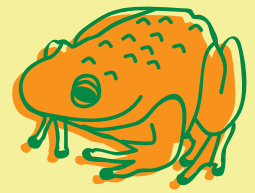


Be a National Trust nature spotter

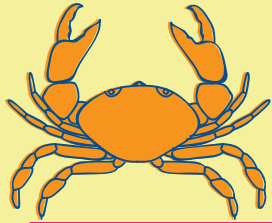
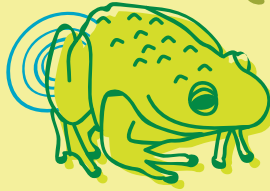
Head to the nearest pond and see how many of these creatures can you find in the water.



Dragonfly nymph are young dragonflies. They live underwater and eat almost any small animal they catch.



Pond skater has long legs that allow them to run across water and eat insects that have fallen in.



Diving beetle larvae look nothing like the adult. They hide in water plants and eat other insects and tadpoles.



Tadpoles of frogs and toads are common in ponds. They use their mouths to scrape algae off the sides and eat it.



Water boatman swims under the surface of the water looking for drowned insects to feed on.



Pond snail has an important role in ponds, eating water plants and cleaning up rubbish.



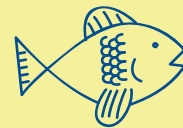
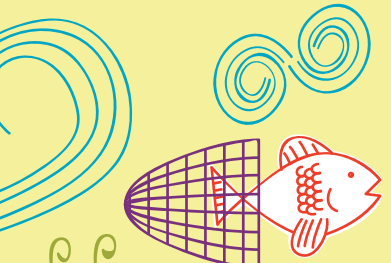
Frog often lays eggs in ponds in large clumps. If you see strings of eggs these will be from toads.



Common newt lays its eggs in ponds during spring then spends most of the summer on land.



Leech looks like a small worm with suckers at each end, so it can hold on tightly to plants and rocks.





Who's lurking in a watery wonderland?



What creatures have you found today?


Draw a picture of your favourite pond creature here:


How many different species can you find in a pond?

Ponds are great for wildlife. They provide water for birds to drink and wash with and give a home to lots of different creatures.

Some of these creatures, like the great crested newt shown in the picture above, can be very rare.

'Discover what's in a pond' is one of the National Trust's top 50 things to do before you're 11 3/4. Tick this off your list and find the other 49 challenges at www.50things.org.uk or get a free scrapbook during your visit.

 Find us on facebook and share your adventures, search for NTYorkshire and NorthEastNT

 Follow us on twitter @NTYorkshire and @NorthEastNT
www.nationaltrust.org.uk/outdoors

