

## National Trust Cottages Accessibility Guide

1 Coleton Barton  
Coleton Fishacre  
Devon



Property Ref: 012017

### Introduction

The property is a semi-detached cottage, privately located just off the entrance drive to Coleton Fishacre. The property next door is also a National Trust holiday cottage and there are shared front and back gardens.

Sleeps up to 4 people in 3 bedrooms on the first floor and has a family ground floor shower room. The majority of the doors within the property have high door knobs set at 1330mm

The property has night storage heating and a multi fuel burner in the sitting room.

There is a narrow and winding staircase.

The Cottage is arranged as follows:

#### Ground floor

Kitchen, sitting/dining room with open fire, shower room.

#### First floor

Three bedrooms (1 twin, 2 singles).

## Pre-Arrival

- See the main webpage for booking and location details.
- Please contact us prior to booking if you have any specific access requirements.
- Directions provided with booking

## Approach

The property is approached via well maintained country lanes, single lane in places with passing places. At the entrance to Coleton Fishacre the property is located down a short track, which is initially steep.

## Arrival & Parking Facilities

- Parking is to the side of the property on loose gravel
- Wooden gate width 1150mm
- There is a gravelled path around the side of the property to the entrance door, path width 1200mm narrowing to 900mm at the corner
- There is outside lighting but if arriving after dark it is advisable to have a torch



## Getting in (and out) of the cottage

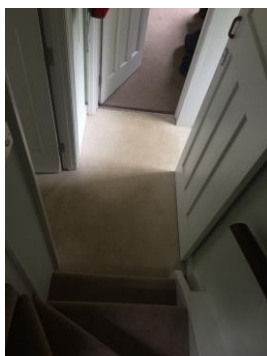
- Combination key box located to the right of the entrance door, height 1450mm
- Front door width 750mm with a step up of 120mm
- Door leads directly into the kitchen with a circulation width of 1300mm
- There is also access in/out of the property via the external door from the sitting room. Door width 850mm, step down 50mm across a wooden threshold, width 210mm, onto paved area 1100mm in width. There are 4 x further steps down to a gravel area and then to lawn, step height 120mm, tread 260mm



## Getting around the cottage

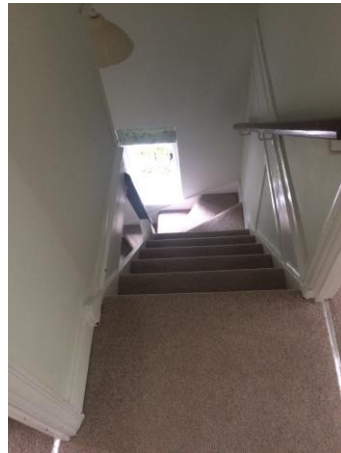
### Ground floor:

- The kitchen leads into a middle hallway, door width 730mm, high door knob, level threshold
- Hall width 800mm, length 1550mm with a linoleum floor and pendant light
- Coat hooks at a height of 1650mm
- There is a reduced head height at one end of the hall, under the stairs, of 1720mm



## First floor:

- Stairs are off the hall. They are carpeted half turn angular winders. The initial stair has a step height of 170mm, the remaining stairs have a step height, 200mm, tread 220mm and narrow in width of 700mm. There is a floor level window and pendant light on the angular turn and a side handrail on the left with a central post.
- Landing width 750mm, length 1250mm, further pendant light



## Kitchen

- Door width from hall 730mm threshold
- Linoleum floor with a sunken door mat by the entrance door
- Height of worktop 900mm
- Fitted kitchen with electric double oven and ceramic hob, under counter fridge with a freezer box, slim line dishwasher, combination washer/dryer, microwave
- Sink with mixer turn taps with washers
- Ceiling track lighting with 3 spotlights
- Windows over side path to hedgerow, half glazed entrance door overlooking garden/lawn
- Circulation width 1300mm reducing to 1150mm with restrictive ceiling height by under stairs cupboard at the doorway to the hall





## Sitting/dining room

- Door width 730mm, level threshold
- Carpet with rug
- Open fire with fire guard
- 1 x 2 seater settee, seat height 410mm
- 2 x armchairs, seat height 520mm
- Window with views over garden and hedgerows
- External half-glazed door with views over garden and hedgerows
- Pendant light, 2 x table lamps, one with under lampshade on/off switch, the other with the switch on the cable
- Drop leaf table, height 720mm, clearance underneath 690mm
- 4 x wooden dining chairs, seat height 480mm



## Shower room

- Sliding entrance door, width 670mm
- Linoleum floor
- Toilet, sink and shower
- Toilet height 420mm with push handle flush
- Sink height 840mm, twist taps with washers
- Shaver socket 1800mm
- Ceiling light
- Circulation from the toilet to the door 700mm
- Dimplex convector heater
- Obscure window over the front lawn
- Shower with sliding door, entrance width 470mm, step up 200mm, electric shower controls, height 1220mm

## Twin bedroom

- Door width, 670mm, level threshold
- Continuation of carpet from the landing
- Twin divan beds width 900mm, length 1900mm, height 600mm
- Central chest of drawers, 2 x bedside lamps with under lampshade on/off switches
- Space between beds 1200mm, side circulations 400mm and 750mm, end of bed circulation 750mm
- Ceiling pendant light
- Dual aspect windows with views over garden and farmland
- 2 x chairs, one with arms, seat height 380mm, the other without arms seat height 440mm



## Single bedroom

- Door width 680mm, level threshold
- Continuation of landing carpet
- Divan bed 900mm width, 1900mm length, 600mm height
- Bedside table, table lamp with under lampshade on/off switch
- Pendant light
- Window with views over the garden and to farmland
- Good circulation to the side of the bed 370mm widening to 680mm, end of bed 900mm
- Wall hooks, height 1800mm, chest of drawers



## Single Bedroom

- Door width 680mm, level threshold
- Continuation of landing carpet
- Divan bed 900mm width, 1900mm length, 600mm height
- Bedside table, table lamp with under lampshade on/off switch
- Pendant light
- Window with views over the garden and to farmland
- Circulation to the sides of the bed 150mm and 1100mm, end of bed 550mm
- Wall cupboard, chest of drawers

## Garden

- There is enclosed garden surrounding the property and shared with the next door holiday cottage.
- It is predominantly gently sloping lawn enclosed by hedgerows with a gravel path around the property
- There is a privacy fence between the paved steps outside the sitting rooms of both properties
- Octagonal wooden picnic bench



## Additional Information

- Assistance dogs are welcome at all our cottages
- In the event of a fire, it is the responsibility of the guests to evacuate themselves. Vibrating fire/smoke detectors are available if requested at time of booking. Please contact us if you have any other specific access requirements in this respect.

## Facilities at all cottages

The National Trust aims to expand the list of accessible /equipment/items available at each cottage and these may include

- Cordless kettle
- Hollowfibre bedding
- Chair with armrests
- Good reading light
- Large handle vegetable peeler
- Easy tin opener
- Non-slip mat for bath/shower
- Non-slip place mat
- Easy jar opener
- Information in alternative formats (on request)

Please note that we cannot guarantee that all items will be available at the time of your visit. Please enquire at the time of booking regarding any particular requests.

## Specialist equipment

Other specialist equipment such as wheelchairs, bath seats, toilet frames etc may be available for loan or purchase from the local Red Cross loan centre. Please check this out before booking the Cottage and contact us if you require further information.

<http://www.redcross.org.uk/standard.asp?id=89425>

## Future Plans to improve Accessibility to National Trust Holiday Cottages

We are currently in the process of writing accessibility guides for all our holiday cottages and improving access over time for all our guests. All feedback is very helpful in informing us of ways in which we can improve access to all our cottages. We welcome any comments or ideas from you about access at this cottage and thank you for taking the time to do this. Please do this in the most convenient way for you. See contact details below or information on website.

## About the Accessibility Guide

This Accessibility Guide is intended to provide key information about the cottage that may be particularly relevant to guests with disabilities. It is reviewed annually. Please contact us prior to booking if you would like more detailed information and we will be happy to oblige.

Phone: 0844 800 2070

Email: [cottages@nationaltrust.org.uk](mailto:cottages@nationaltrust.org.uk)

## Access for All at the National Trust

We continue to work to improve accessibility at all our holiday cottages. We welcome comments and ideas on improving access.

Phone: 0344 800 2070

Email: [cottages@nationaltrust.org.uk](mailto:cottages@nationaltrust.org.uk)

Date 20 June 2018