

National Trust Cottages Accessibility Guide

3 Cart Lodge

Upper Sheringham
Sheringham
Norfolk
NR26 8TB
Ref: 010021



Introduction

- The Cottage is arranged as follows:

Ground floor:

- Small hallway, bathroom with shower over bath, kitchen/dining room.

First floor

- Studio sitting room with brass and iron double bed.



Pre-Arrival

- See the main webpage for booking and location details.
- Please contact us prior to booking if you have any specific access requirements.
- Directions provided with booking
-

Approach

- The cottage is located down a long bumpy track just off Park road.
- Follow Park Road until it forks and then take the right fork signposted private.
- Travel to the end of the drive and you will arrive at the property



Arrival & Parking Facilities

- Parking available for two cars below the barn with height off 2030mm high by 2020mm wide.
- The key safe is at 1630mm above ground level.



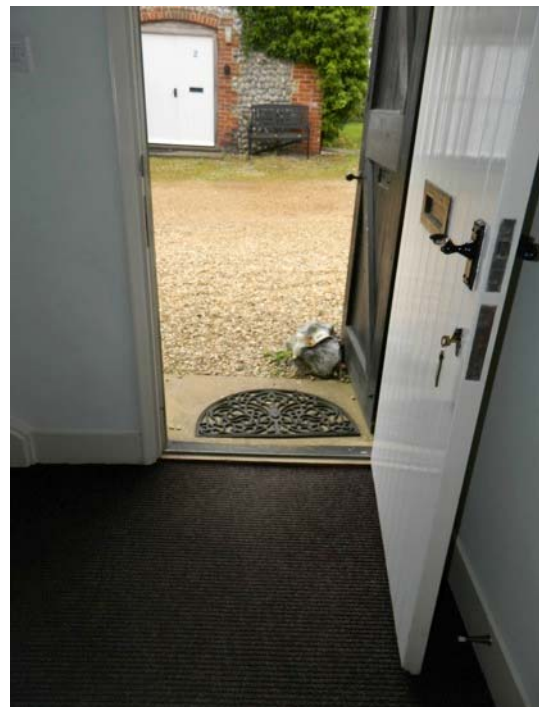
There is a shared facility of washing machines and tumble dryers located at the bottom of the stairs to the right in the right hand corner of the barn. Threshold step 120mm external step down 40mm into washroom.



Getting in (and out) of the cottage

- After a step up of 80mm height with 150mm depth the front door with width 800mm opens inwards into the hallway.
- Straight through the hallway leads you into the kitchen diner.
- To the right of the hallway is the staircase taking you up to the studio lounge and double bedroom, whilst next to the staircase is the bathroom.
- 900mm height of handrail on right of steps
- Step up of 20mm for 170mm depth step up of 80mm for 100mm depth x step up of 20mm. step down of 30mm.

Hallway 1550mm x 3100mm





Getting around the cottage

Ground floor:

- Small hallway, bathroom, kitchen/dining room.

First floor

- Studio sitting room with brass and iron double bed.

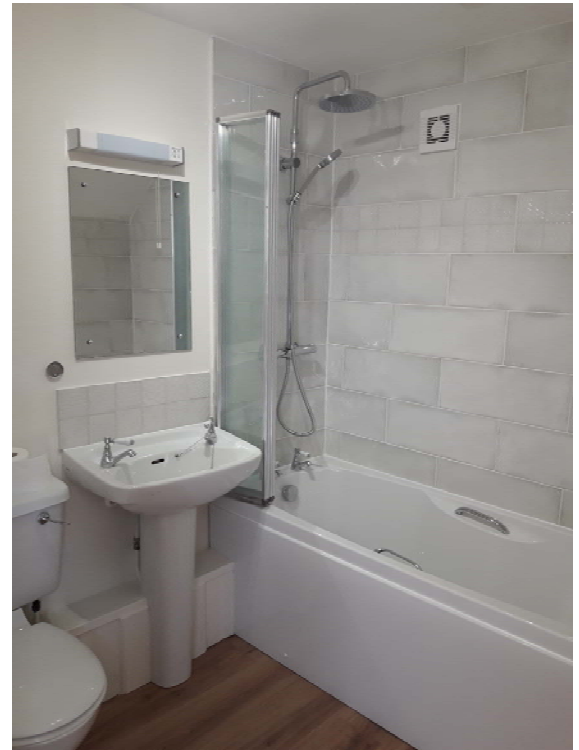
Kitchen/Dining room

- Step up of 20mmx130mm depth into kitchen, with 20mm step down.
- Height of worktop is 900mm/ eyelevel units 1350mm height.
- Door width 760mm
- Turn handle taps
- Switches are at 918mm
- Electric hob & oven cooker
- Directional spotlights on beam.
- Appliances include Dishwasher, Cordless kettle, microwave, toaster, fridge & ice box.
- Access to shared washing machine and tumble dryer.
- Table at height 780mm
- Chairs at height 440mm
- Vinyl flooring
- Minimum clearance space 770mm



Ground floor Bathroom

- Wooden threshold of 20mm x 130mm depth into bathroom, with 20mm step down.
- Vinyl flooring
- The WC is 400mm high
- Basin height 820mm with lever taps
- Bath dimensions are 460mm width x 360mm Height (internal) 580mm height external x 1520mm length
- 960mm height to bar shower control
- Folding shower screen
- Wooden towel stand
- 1450mm high for pull light cord
- Directional spotlight
- Door 760mm wide 1230mm height for latch
- 1370mmx1940mm bathroom dimension



Studio Sitting Room

- The Sitting room is reached after climbing the 13 steps. There is a landing which to the left leads on to the studio sitting room.
- Minimum clearance of 500mm
- Seat height 420mm (2x 2seater sofa and one armchair)
- 480mm height of coffee table.
- Height of television stand 500mm/ Flat screen tv with remote
- Bookshelf with height off 1220mm
- Small table with telephone and radio at height off 730mm



Telephone/Other Rooms

- Situated on top of small cabinet below right hand window. At height of 730mm.

Double Bedroom

- Chair height 460mm
- Clearance under bed 310mm
- Minimum clearance around bed 520mm
- Measurements of bed 1350w x 850mmh x 1900mm
- Two Bedside tables 740mm with lamp on either side.
- Plug Switches at 500mm
- Wardrobe dimensions are 820mm(W) x 1900mm(H) x 550mm(D)
- Dressing table height 770mm, with dressing stool at height of 400mm.
- Locked door to boiler cupboard
- Lighting – two bedside lights, with one overhead light and a wall light above dressing table with pull cord.



Garden

- There is a small grassed area for sitting outside.

Additional Information

- Assistance dogs are welcome at all our cottages
- In the event of a fire, it is the responsibility of the guests to evacuate themselves. Vibrating fire/smoke detectors are available if requested at time of booking. Please contact us if you have any other specific access requirements in this respect.

Facilities at all cottages

The National Trust aims to expand the list of accessible /equipment/items available at each cottage and these may include

- Cordless kettle
- Hollowfibre bedding
- Chair with armrests

- Good reading light
- Large handle vegetable peeler
- Easy tin opener
- Non-slip mat for bath/shower
- Non-slip place mat
- Easy jar opener
- Information in alternative formats (on request)

Please note that we cannot guarantee that all items will be available at the time of your visit. Please enquire at the time of booking regarding any particular requests.

Specialist equipment

Other specialist equipment such as wheelchairs, bath seats, toilet frames etc may be available for loan or purchase from the local Red Cross loan centre. Please check this out before booking the Cottage and contact us if you require further information.

<http://www.redcross.org.uk/standard.asp?id=89425>

Future Plans to improve Access to NT Holiday Accommodation

We are currently in the process of writing accessibility guides for all our holiday cottages and improving access over time for all our guests. All feedback is very helpful in informing us of ways in which we can improve access to all our cottages. We welcome any comments or ideas from you about access at this cottage and thank you for taking the time to do this. Please do this in the most convenient way for you. See contact details below or information on website.

About the Accessibility Guide

This Accessibility Guide is intended to provide key information about the accommodation that may be particularly relevant to guests with disabilities. It is reviewed annually. Please contact us prior to booking if you would like more detailed information and we will be happy to oblige.
Phone: 0344 800 2070

Email: cottages@nationaltrust.org.uk

Access for All at the National Trust

We continue to work to improve accessibility at all our holiday cottages. We welcome comments and ideas on improving access.

Phone: 01793 818531

Email: accessforall@nationaltrust.org.uk

Date September 2019