

National Trust Cottages Accessibility Guide (Aug 2019)

3 Horsey Barns Horsey, Norfolk NR29 4AD

Ref: 010013-Heigham



Introduction

- The front door opens to attractive beamed open plan lounge/ diner/ well equipped Kitchen with a mezzanine level with a double bedroom/ shower room with 2 comfortable chairs that overlook large windows to the front of the property.

Pre-Arrival

- See the main webpage for booking and location details.
- Please contact us prior to booking if you have any specific access requirements.
- Directions provided with booking

Approach

- The surrounding area is fairly level but will be subject to weather conditions.
- The step to the Front door is of stone set, 100mm height.



Arrival & Parking Facilities

- Horsey Barns are well marked and can easily be seen from the road.
- Gravel surfaces in the front of the cottage which can be deep in places.
- Off road parking is to the rear of the barns adjacent to the side gate of the garden. There is security lighting in this area.
- The ground around the cottage is fairly level.



Getting in (and out) of the cottage

- Stone set step 100 mm height, wooden threshold step into main door 50mm in and 30mm down.

Getting around the cottage

Ground Floor

- Main door is 780mm width/ 1890mm height with inset mat.
- Timber floors.
- Back door with inset mat to garden 1110 width with a 20mm wooden threshold step to outside.
- Gravel outside the entrance door and into courtyard.

Sitting Room



- 3 two seater sofa's 470mm seat height
- Tv
- Coffee table 480mm height
- Main central light and 3 wall lights.
- Radiator/ stairs clearance 860mm.
- Stair gates to the bottom and top of stairs.
- 13 stair's 190mm-200mm height with a depth of 230mm.
- Clearance space at top of stairs to wall-970mm width.

Diner/kitchen



- Step down from hallway into Kitchen 160mm height.
- Height of worktop 920mm height, 600-670mm depth.
- Space between worktop and breakfast bar 1100mm width.
- Space between edge of worktop and dishwasher 1040mm width.
- Electric oven and hob.
- Dishwasher.
- Microwave.
- Washing machine.
- Fridge/freezer.
- Under pelmet lighting, good levels of lighting.
- Dining table to seat 6, 703mm height with 590mm knee clearance, chair seat height 501mm with 101mm clearance from chair seat to under table.



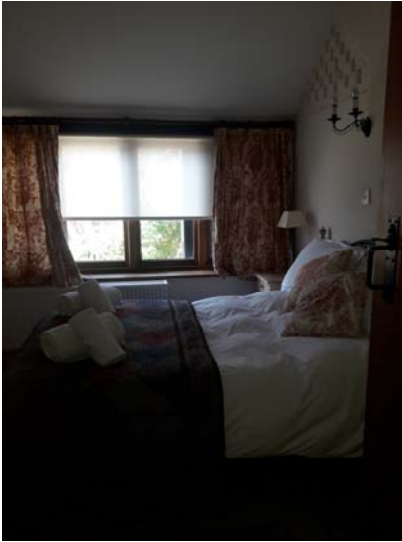
Bedroom

Twin Bedroom



- Bedroom door 700mm clearance/ 1980mm height.
- Wooden pine bed frames, 610mm height, 1950mm length.
- Space between beds 500mm, foot of bed distance to wall 380mm. Space between windowsill /bed 300mm.
- Wardrobe with 3 drawers 830mm wide, distance from wardrobe to bed 600mm
- 2 bedside cabinets 710mm height.
- Wall lights and overhead light.
- Wooden floor

Double Bedroom



- Bedroom door 690mm clearance width, 1970mm height.
- Devan bed 610mm height, 1910mm length.
- Bed to radiator distance 440mm, bed to wall distance 740mm, bed to wardrobe 390mm.
- Wardrobe with 3 drawers, width 820mm, 550mm depth.
- Bedside cabinets x 2 760mm height.
- 2 x wall lights.
- Wooden floor.

Mezzanine Bedroom



- 2 low beams- 1st 1510mm high, 2nd 1560mm high on entry to mezzanine bedroom.
- Metal Bed frame-610mm height, 1950mm length.
- Bed to banister clearance- 730mm, wardrobe to bed clearance 900mm, drawers to bed clearance- 1340mm.
- Wardrobe- 900mm depth, 480mm width.
- Bedside cabinets- 430mm height.
- Chest of drawers-1030mm height, 490mm depth.
- 2 x wooden chairs- 490mm height.
- 2 x Arm chairs 490mm height.
- Wooden floor.



Shower room



Quite a narrow space.

Door- 590mm clearance width, 1970mm height.

Toilet- 420mm height.

Sink- 830mm height with cross head taps.

Mira shower, sliding door opening 430mm width.

Bathroom



- Bathroom door is 680mm wide opening in towards the bathroom.
- Bathroom comprises lavatory, basin and bath with bath with shower mixer attachment on cross head taps and glass shower screen.
- The WC is 420mm high
- The basin is 800mm high
- The internal bath area is 1400mm long x 600mm wide and 500mm high and has integral rails either side.
- 1 main light and shaving light above mirror.
- Vinyl flooring

Garden



- The Garden is accessed by a wooden gate round the side of the property- gate height 1140mm, secure wire and post fencing 1180 back fence height.
- Lawn and shingle paths.
- Garden table/chairs for 6 people, table-710mm height/680mm knee clearance, chair height 440mm.

Additional Information

- Assistance dogs are welcome at all our cottages
- Dogs welcome at 3 Horsey Barns – the garden is enclosed with wire fencing.
- In the event of a fire, it is the responsibility of the guests to evacuate themselves. Vibrating fire/smoke detectors are available, if requested at time of booking. Please contact us if you have any other specific access requirements in this respect.

Facilities at all cottages

The National Trust aims to expand the list of accessible /equipment/items available at each cottage and these may include

- Cordless kettle
- Hollowfibre bedding
- Chair with armrests
- Good reading light
- Large handle vegetable peeler
- Easy tin opener
- Non-slip mat for bath/shower



- Non-slip place mat
- Easy jar opener
- Information in alternative formats (on request)

Please note that we cannot guarantee that all items will be available at the time of your visit. Please enquire at the time of booking regarding any particular requests.

Specialist equipment

Other specialist equipment such as wheelchairs, bath seats, toilet frames etc may be available for loan or purchase from the local Red Cross loan centre. Please check this out before booking the cottage and contact us if you require further information.

<http://www.redcross.org.uk/standard.asp?id=89425>

Future Plans to improve Access to National Trust Holiday Accommodation

- We are currently in the process of writing accessibility guides for all our holiday cottages and bunkhouses and improving access over time for all our guests. All feedback is very helpful in informing us of ways in which we can improve access. We welcome any comments or ideas from you about access at this cottage and thank you for taking the time to do this. Please do this in the most convenient way for you. See contact details below or information on website.

About the Accessibility Guide

- This Accessibility Guide is intended to provide key information about the accommodation that may be particularly relevant to guests with disabilities. Please contact us prior to booking if you would like information that is more specific and we will be happy to oblige.

Email: cottages@nationaltrust.org.uk

Phone: 0344 8002070

Access for All at the National Trust

- The Access for All office works to improve access at all National Trust accommodation and properties. The office welcomes comments and ideas on improving access.

Phone: 01793 818531

Email: accessforall@nationaltrust.org.uk

Date