

National Trust Cottages Access Statement

Cottage Ref: 011057

Bar Lodge

Penrose Hill
HELSTON
Cornwall



Introduction

- Bar Lodge is a striking, stone built, gate house. It is on a plot cut into the cliffs on the remote seaward edge of the Penrose estate. It has far reaching views to the front over Loe Bar and Mount's Bay.
- The Cottage is arranged as follows:

Ground Floor:

- Hall, Lounge, Kitchen, Dining room, Shower/Toilet room and Twin bedroom.

First Floor:

- Bathroom, Cloakroom, Twin and Double Bedrooms. There is also a large Roof Terrace.

Pre-Arrival

- See the main webpage for booking and location details.
- Please contact us prior to booking if you have any specific access requirements.
- Directions provided with booking

Arrival & Parking Facilities

- The Lodge is on the Penrose estate which is off the B3304 Helston to Porthleven road. The cottage is about two miles from the main road and the estate lane is a mixed quality one. For most of the way it is a single lane track in the woods above Loe Pool. The cottage is at the end of the track and the parking area is the hard standing adjacent to the nearest side of the lodge.



Getting in (and out) of the cottage



- There is a grand, raised pathway, six 160mm high steps up, from the parking area to the front door. It has a colourful tiled floor and impressive stone balustrades. The combination key safe for the front door is on the wall to the left of the door.
- There is an outside light but it is recommended to bring a torch to set the correct lock combination on arrival. Keys to be returned to safe on final departure.

Getting around the cottage

Ground floor:

- French, part glazed doors open into small porch and then, part glazed French doors open into hall. Five solid, wooden doors and a stairway off hall plus rear door. All doors open inwards.
- Doors to lounge, dining room, kitchen, twin bedroom and shower room.
- Stairway up to large half landing and the on to first floor landing.

First floor:

- Full return stairway up from hall to half landing with two solid wooden doors off to bathroom and cloakroom.
- Stairway then continuing up to top landing with two solid, wooden doors off to double and twin bedrooms.
- Inner door and storm door also off top landing onto a large, part covered, roof terrace.

Front Porch – Single aspect.



- Three granite steps (160mm H) up to porch doors.
- Part glazed, French front doors, each 490mm wide, open inwards into porch.
- Coloured stone tile flooring.
- Outside light.
- Wall mounted coat rack with 6 hooks.
- French, front doors to hall.

Hall – Dual aspect.



- One step (160mm H) up from porch to front doors. Glazed panel above doors.
- Part glazed, French front doors, each 540mm wide, open inwards into hall.
- Parquet flooring.
- Two ceiling lights – central one on 2-wayswitch.
- Night storage heater.
- Two tier side table (1,200mm W x 300mm D x 760mm H).
- Wall mounted coat rack with 4 hooks.
- Rear door 820mm wide, part glazed, with part glazed panel to side, two steps, 200mm high, down to rear porch and yard.
- Five solid, wooden doors and a stairway off hall

Lounge – Single aspect.





- Solid wooden door 780mm wide opens inwards from hall.
- Parquet flooring with large central rug.
- Ceiling light. Table lamp and one standard lamp.
- Night storage heater. Convector heater and an open fireplace.
- Sash bay window, with deep sill, to front aspect, 3 panes (each 700mm W x 1,700mm H).
- Pair of two seater settees (440mm seat H).
- Wing back chair (440mm seat H).
- Easy chair (360mm seat H).
- Side table (630mm W x 290mm D x 650mm H).
- Round side table (490mm Dia x 730mm H).
- T.V. DVD player. Micro Radio/CD player.

Dining Room – Dual aspect.





- Solid wooden door 760mm wide opens inwards from hall.
- Parquet flooring with large rug under table.
- Ceiling light. Two table lamps.
- Night storage heater. Convector heater.
- Sash window, with deep sill, to front aspect (1,400mm W x 1,700mm H).
- Protruding, semi-circular, corner bay window, front and eastern aspect (5 panes each 500mm W x 1,700mm H).
- Dining table (750mm W x 2,130mm L x 640mm knee H).
- Seven wooden “kitchen” chairs (460mm seat H).
- Three tier side table (910mm W x 360mm D x 860mm H).
- Side table (840mm W x 480mm D x 740mm H).
- Bow fronted side table (910mm W x 520mm D x 770mm H).
- Wooden chair (420mm seat H).

Kitchen – Single aspect.





- Solid wooden door 760mm wide opens inwards from hall.
- Tiled flooring.
- Nine recessed down lights.
- Night storage heater.
- Sash window, with deep sill, to eastern side aspect (1,400mm W x 1,400mm H).
- Kitchen floor cupboards with drawers under 930mm High worktops.
- Wall cupboards 450mm above worktops.
- Oval pine gate leg table (530mm W *closed* x 870mm L x 780mm H).
- Two wooden “kitchen” chairs (460mm seat H).
- Washing machine, Fridge/ Freezer, Dishwasher, Toaster, Microwave and Kettle.
- There is a Tumble dryer in a store room on the rear porch accessed through the rear door.
- Electric cooker with ceramic hob and extractor/light hood above.

Twin Bedroom (ground floor) – Single aspect.

- Solid wooden door 760mm wide opens inwards from hall.
- Fitted carpet flooring.
- Ceiling light. Table lamp.
- Night storage heater. Convector heater.
- Sash window, with deep sill, to western side aspect (1,400mm W x 1,400mm H).
- Pair of wooden “kitchen” chairs (460mm seat H).
- Bedside cabinet (470mm W x 420mm D x 550mm H).
- Built-in wardrobe (900mm W).
- Chest of four drawers (800mm W x 420mm D x 700mm H).
- Pair of single beds (1,000mm W x 2,000mm L x 600mm H).

Shower Room (ground floor) – Single aspect.

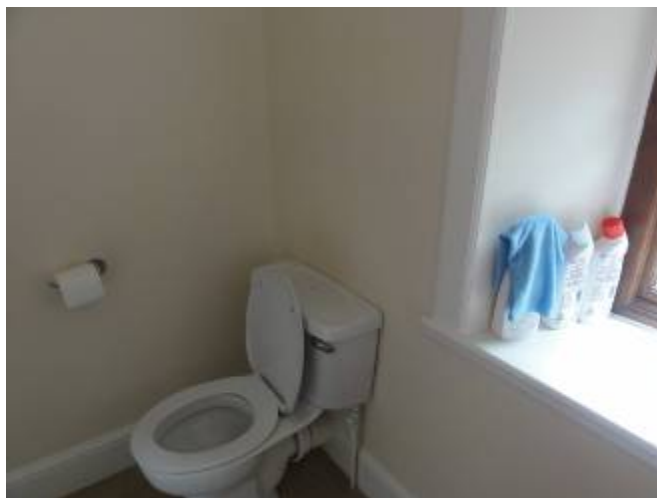


- Solid wooden door 670mm wide opens inwards from hall.
- Fitted carpet flooring.
- Ceiling light. Mirror with light/shaver socket above.
- Electric heated towel rail. Wall heater.
- Pair of sash windows, with deep sills, to western side aspect (each 500mm W x 900mm H).
- W.C. (410mm seat H).
- Wash basin (780mm H).
- Bow fronted, corner shower cubicle (860mm W x 860mm D) with sliding safety glass screens (420mm W opening).

Stairway to Half landing and First floor – Dual aspect.



- Full return stairway with large half landing with bathroom and cloakroom off. Double and twin bedrooms off top landing plus exit onto roof terrace.
- Fitted carpet flooring.
- Wooden banisters (800mm H).
- 13 steps (900mm W x 160mm H) to half landing and 4 more steps to top landing.
- Ceiling light on 2-way switch.
- Window, with deep sill, to rear aspect at half landing (1,800mm W x 600mm H).
- Window, at top of wall, to rear aspect on top landing (1,900mm W x 900mm H).
- Window, with deep sill, to front aspect on top landing (600mm W x 900mm H).
- Part glazed door to terrace.
- Blanket chest on half landing (1,000mm W x 450mm D x 560mm H).

Cloak Room – Single aspect.

- Solid wooden door 670mm wide opens inwards from half landing.
- Fitted carpet flooring.
- Ceiling light and light over mirror on same switch.
- Electric towel rail.
- Sash window, with deep sill, to eastern side aspect (500mm W x 800mm H).
- W.C. (420mm seat H). Wash basin (740mm H).

Bathroom – Single aspect.

- Solid wooden door 720mm wide opens inwards from half landing.
- Fitted carpet flooring.
- Ceiling light. Mirror with light/shaver socket above.
- Electric towel rail.
- Sash window, with deep sill, to western side aspect (500mm W x 800mm H).
- Wash basin (740mm H).
- Bath (680mm W x 1,650mm L x 560mm H).

Double Bedroom – Dual aspect.



- Solid wooden door 750mm wide opens inwards from top landing.
- Fitted carpet flooring.
- Ceiling light. Pair of table lamps.
- Night storage heater. Convector heater. Non-functional fireplace.
- Sash window, with deep sill, to western side aspect (1,400mm W x 1,200mm H).
- Sash window, with deep sill, to front aspect (1,300mm W x 1,600mm H).
- Dressing table (1,030mm W x 460mm D x 620mm H).
- Pair of Wooden “kitchen” chairs (460mm seat H).
- Chest of drawers, “2 over 2”, (1,030mm W x 460mm D x 830mm H).
- Free standing wardrobe (820mm W x 530mm D x 2,140mm H).
- Oval gate leg side table (610mm W x 340mm L *closed* x 730mm H).
- Round side table (520mm Dia x 740mm H).
- Round “petal shaped” side table (600mm Dia x 740mm H).
- Double bed (1,500mm W x 2,000mm L x 600mm H).

Twin Bedroom – Single aspect.



- Solid wooden door 760mm wide opens inwards from top landing.
- Fitted carpet flooring.
- Ceiling light. Table lamp.
- Night storage heater and Convector heater. Non-functional fireplace.
- Sash window, with deep sill, to western side aspect (1,400mm W x 1,200mm H)
- Built-in wardrobe (740mm W).
- Wooden “kitchen” chair (460mm seat H).
- Chest of four drawers (820mm W x 420mm D x 700mm H).
- Bedside cabinet (460mm W x 420mm D x 550 H)
- Two single beds (each 1,000mm W x 2,000mm L x 600mm H).

Roof Terrace



- Part glazed wooden door 750mm wide opens inwards into top landing.
- Secondary part glazed wooden “storm” door 750mm wide, immediately behind first door, opens outwards onto terrace.
- Asphalt flooring on terrace.
- Picnic table.
- Wooden balustrade (920mm H) around perimeter.
- Back section roofed. Ceiling light. Barbeque.

Garden



- There is no real garden. The parking is to one side and the other has a small area with the rotary dryer on it. There is a very small courtyard at the back against the cliff face.

Additional Information

- Assistance dogs are welcome at all our cottages
- In the event of a fire, it is the responsibility of the guests to evacuate themselves. Vibrating fire/smoke detectors are available if requested at time of booking. Please contact us if you have any other specific access requirements in this respect.

Facilities at all cottages

In addition to the standard equipment and facilities, each cottage is equipped with the following:

- Cordless kettle
- Chair with armrests in dining room and living room.
- Good reading light
- Large handle vegetable peeler
- Easy tin opener
- Non-slip mat for bath/shower
- Non-slip place mat
- Easy jar opener
- Information in alternative formats (on request)

We aim to provide these items in all cottages but please check when booking as to their availability and to check if new items have been added to the list.

Specialist equipment

Other specialist equipment such as wheelchairs, bath seats, toilet frames etc may be available for loan or purchase from the local Red Cross loan centre. Please check this out before booking the Cottage and contact us if you require further information.

<http://www.redcross.org.uk/standard.asp?id=89425>



Future Plans to improve Access to NT Holiday Cottages

- We are currently in the process of writing access statements for all our holiday cottages and improving access over time for all our guests. All feedback is very helpful in informing us of ways in which we can improve access to all our cottages. We welcome any comments or ideas from you about access at this cottage and thank you for taking the time to do this. Please do this in the most convenient way for you. See contact details below or information on website.

About the Access Statement

- This Access Statement is intended to provide key information about the cottage that may be particularly relevant to guests with disabilities. Please contact us prior to booking if you would like information that is more specific and we will be happy to oblige.
Email: cottages@nationaltrust.org.uk
Phone: 0844 8002070

Access for All at the National Trust

- The Access for All office works to improve access at all National Trust cottages and properties. The office welcomes comments and ideas on improving access.
Phone: 01793 818531
Email: accessforall@nationaltrust.org.uk

July 2011