

National Trust

National Trust Cottages Accessibility Guide

Cottage name: Blakeney Lodge

Address: Blakeney Lodge, Friary Farm, Cley Road, Blakeney Norfolk NR25 7NW

Ref: 010057

Introduction



Blakeney Lodge is a single storey cottage which sits in the shadow of an old windmill, whilst on the edge of the Blakeney National Nature Reserve. Just a short walk will lead you to the wild saltmarshes of Blakeney and vast views of the coast.

Pre-Arrival

- See the main webpage for booking and location details.
- Please contact the Contact Centre 0844 800 2070 prior to booking if you have any queries or specific access requirements.
- Directions are provided with booking

Approach



Enter Friary Farm (opposite St Nicholas Church) and follow the driveway following sign for the national trust. The driveway goes to the right and you will find Blakeney Lodge directly ahead of you next to the windmill.

Arrival & Parking Facilities

- Gravelled driveway in front of 5 bar gate
- There is a further gravelled driveway for parking in front of the cottage

Getting in (and out) of the cottage



- Key safe access to side of the cottage
- Entry doorway with external light

- Width of entry door 820mm with small lip of 20mm of threshold
- Hallway 1060mm width leads through to two bedrooms, kitchen/sitting room and bathroom
- Storage area to hallway
- No threshold steps inside cottage
- Tiled flooring throughout

Getting around the cottage

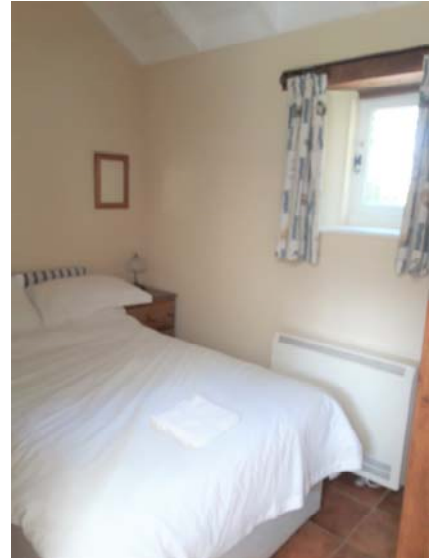
Sitting Room/Kitchen



- Entry doorway 770mm width
- Tiled floor
- 2 two seater sofas seat height of 480mm
- Tv/storage cupboard with flat screen tv and remote control
- Dvd and video player
- Small pine storage box
- Blinds to windows 1400mm floor to cords
- 2 sets of wall lights/ 5 spotlights and table lamp
- Dining table 790mm height and 3 chairs height 470mm
- Kitchen counter top height 900mm
- Under counter washing machine
- Under counter fridge
- Bosch integrated electric oven with grill
- Zanussi halogen hob
- Kitchen sink with mixer taps
- Microwave, cordless kettle and toaster
- Good levels of natural light

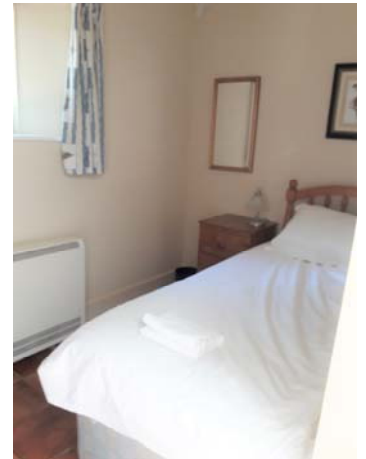
Bedroom 1

- Entry door 770mm width
- Double divan bed 1830 length, 1150mm width and 600mm height
- 1 bedside table 740mm height with lamp
- 1 bedside shelf with lamp 740mm height
- Wardrobe
- Wall uplighter
- Restricted access around bed
- Tiled floor



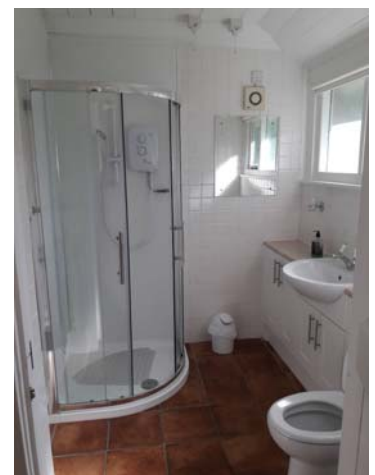
Bedroom 2

- Doorway 770mm width
- Single divan bed 1850mm length, 850mm width and 650mm height
- Bedside table 740mm height with lamp
- Wardrobe
- Uplighter to wall
- Tiled floor



Bathroom

- Doorway 900mm width
- Corner enclosed shower unit 110mm step into tray
- Shower door opening 520mm width
- Tritan electric shower 1550mm to centre of shower unit
- Vanity unit with integrated basin 850mm height
- Lever taps to basin
- Close coupled wc 410mm to seat height
- Toughened glass shelf with light over and shaver socket
- Heated towel rail
- 1560mm to shower pull cord
- 1700mm to water heater pull cord
- 1730mm to extractor fan pull cord
- 1460mm to blind pull cord



Garden

- Garden enclosed with flint wall
- Garden furniture available



Additional Information

Facilities at all cottages

The National Trust aims to expand the list of accessible /equipment/items available at each cottage and these may include

- Cordless kettle
- Hollowfibre bedding
- Chair with armrests
- Good reading light
- Large handle vegetable peeler
- Easy tin opener
- Non-slip mat for bath/shower
- Non-slip place mat
- Easy jar opener
- Information in alternative formats (on request)

Please note that we cannot guarantee that all items will be available at the time of your visit. Please enquire at the time of booking regarding any particular requests.

Specialist equipment

Other specialist equipment such as wheelchairs, bath seats, toilet frames etc may be available for loan or purchase from the local Red Cross loan centre. Please check this out before booking the Cottage and contact us if you require further information.

<http://www.redcross.org.uk/standard.asp?id=89425>

Future Plans to improve Access to National Trust Holiday Accommodation

- We are currently in the process of writing accessibility guides for all our holiday cottages and bunkhouses and improving access over time for all our guests. All feedback is very helpful in informing us of ways in which we can improve access. We welcome any comments or ideas from you about access at this cottage and thank you for taking the time to do this. Please do this in the most convenient way for you. See contact details below or information on website.

About the Accessibility Guide

- This Accessibility Guide is intended to provide key information about the accommodation that may be particularly relevant to guests with disabilities. Please contact us prior to booking if you would like information that is more specific and we will be happy to oblige.
Email: cottages@nationaltrust.org.uk
Phone: 0344 8002070

Access for All at the National Trust

- The Access for All office works to improve access at all National Trust accommodation and properties. The office welcomes comments and ideas on improving access.
Phone: 01793 818531
Email: accessforall@nationaltrust.org.uk

Date September 2019