

# National Trust Cottages Accessibility Guide



Chirk Home Farm  
Chirk Castle  
Chirk  
Wrexham  
North Wales

**Ref:** 008012

## **Introduction**

- . Traditional stone cottage set in the castle grounds
- . Semi detached
- . The cottage can accommodate four people plus a cot
- . The cottage has oil central heating
- . Wood-burning stove in sitting room
- . Enclosed front and rear private garden with patio area at rear

The accommodation is arranged as follows:-

## **Ground Floor**

Hall, sitting room, kitchen, dining room.

## **First Floor**

1 double bedroom, 1 twin bedroom, bathroom with WC

## **Pre-Arrival**

- . See the main webpage for booking and location details
- . Please contact us prior to booking if you have any specific access requirements
- . Directions provided with booking
- . Bring torch if arriving in dark.

## **Approach**

- . The cottage is set within the Castle grounds. The approach to the cottage is through the grounds of the castle itself. Guests will need to follow the instructions sent with the booking information with care.

### **Arrival and Parking Facilities**

. You can load and unload your car outside the cottage but are then asked to park your car in the main visitor car park a couple of minutes walk away.

.The keysafe is in a black box outside of the front door and on the left (as facing). It is operated by a push button mechanism. A torch is recommended especially if arriving in the dark as the numbers on the box can be difficult to see. The leu os returned to the keysafe on departure.



**Load and Unload vehicle outside cottage**



**Main visitor car park beyond trees**

## Getting in and out of the cottage

- . A gravel path leads you through the front garden
- . There is a step into the cottage at the front door. This is 157mm high.
- . The door has a clear opening width of 880mm.



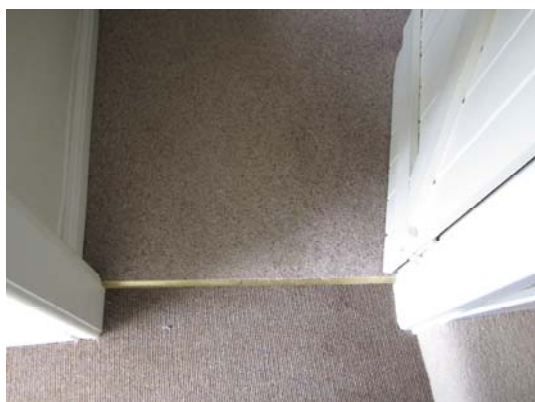
**Gravel path**



**Step into cottage**

## Getting around the cottage

- . Level access throughout the ground floor
- . Internal door width to lounge is 760mm. To kitchen is 790mm. To dining room is 760mm.
- . The lounge, hall and dining room have carpeted floors. Lounge with rug which has a non-slip backing
- . The kitchen has lino flooring.
- . Steep staircase (930mm wide) with each step being 200mm high and the handrail on right hand side at 900mm.



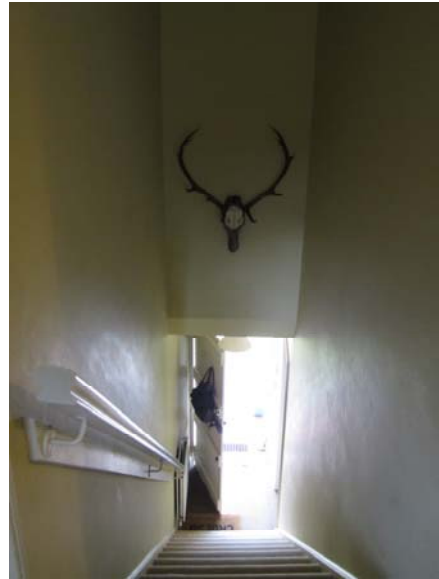
**Flooring from hall to lounge**



**Lounge carpet and rug**



**Staircase**



**Staircase and handrail**

### **Sitting Room**

- . **One burnt orange sofa with a seat height of 510mm**
- . **One Checked sofa with a seat height of 450mm**
- . **Wood burning stove**
- . **Good natural light from the windows**
- . **Lighting from ceiling rose and wall lights.**
- . **Additional reading lamp on side table.**



**Burnt orange sofa**



**Checked sofa**



**Extra lighting on side table**



**Wood burner and good natural light from front window**

### **Kitchen**

- . Directly off sitting room
- . Granite work tops. Height of worktop is 910mm
- . Space between units on each side is 1500mm
- . Electric cooker with ceramic hob
- . Dishwasher, fridge/freezer, washer/dryer
- . Microwave, kettle, toaster



## **Dining Room**

- . Wooden table and chairs
- . Height of table is 760mm with maximum clearance underneath of 750mm
- . Wooden dining chairs have seat height of 440mm.
- . Rocking chair has seat height of 460mm.
- . Good natural light from window at front and rear of room.



## **First Floor:**

- . All floors are carpeted with rugs in bedrooms with non-slip backing
- . good natural light from all windows
- . All internal doors upstairs have a clear opening width of 700mm

## **Double Bedroom**

- . Double bed is 700mm high. Antique brass and iron bed.
- . 4'6" x 6'2"
- . Clear space under bed is 350mm
- . Bedside lights with adjustable heads in addition to ceiling light
- . Built in wardrobe
- . Full length mirror
- . Good natural lighting



### **Twin Bedroom**

- . Beds are 3'6" wide and 6'2" long
- . Antique brass and iron beds. 750mm high.
- . Clear space under bed is 350mm.
- . Bedside table and light at each bed.
- . Chest of drawers.
- . Built in wardrobe.



## **Bathroom and WC**

- . Bath with electric shower over
- . Basin is 840mm high
- . WC is 440mm high
- . Acrylic bath is 530 high x 1700mm x 680mm wide
- . 1670mm between edge of basin and bath



## **Additional Information**

- . Assistance dogs are welcome at all our cottages
  - . Up to 2 dogs are allowed at this cottage
  - . There is a TV with free sat and a DVD player at this cottage
  - . In the event of a fire, it is the responsibility of the guests to evacuate themselves.
- Please contact us if you require any specific access requirements in this respect.

## **Facilities at all cottages**

The National Trust aims to expand the list of accessible / equipment / items available at each cottage and these may include

- . cordless kettle
- . chair with armrests
- . good reading light
- . large handle vegetable peeler
- . easy tin opener
- . non-slip mat for bath/shower
- . non-slip place mat
- . easy jar opener
- . information in alternative formats (on request)



Please note that we cannot guarantee that all items will be available at the time of your visit. Please enquire at the time of booking regarding any particular requests.

### **Specialist Equipment**

Other specialist equipment such as wheelchairs, bath seats, toilet frames and commodes etc may be available for loan or purchase from the local Red Cross loan centre. Please check this out before booking the cottage and contact us if you require further information.

<http://www.redcross.org.uk/standard.asp?id=89425>

### **Future plans to improve accessibility to National Trust Holiday cottages**

We are currently in the process of writing accessibility guides for all our holiday cottages and improving access over time for all our guests. All feedback is very helpful in informing us of ways in which we can improve access to all our cottages. We welcome any comments or ideas from you about access at this cottage and thank you for taking the time to do this. Please do this in the most convenient way for you. See main web pages for details.

### **About the Accessibility Guide**

This accessibility guide is intended to provide key information about the cottage that may be particularly relevant to guests with disabilities. Please contact us prior to booking if you would like information that is more specific and we will be happy to oblige.

Email: [cottages@nationaltrust.org.uk](mailto:cottages@nationaltrust.org.uk)

Phone 0344 8002070

### **Access for All at the National Trust**

The access for all office works to improve access at all National Trust cottages and properties. The office welcomes comments and ideas on improving access.

Phone: 01793 817634

Email: [accessforall@nationaltrust.org.uk](mailto:accessforall@nationaltrust.org.uk)

March 2012