

National Trust Cottages Accessibility Guide

Countisbury Hill Cottage
Countisbury Hill
Lynmouth
Devon

South West Region

Cottage Ref: 012021



Introduction

- Just inland from the dramatic coast around Foreland Point and set back 50m from the main coastal road, Countisbury Hill is a detached, traditional stone and slate built cottage
- The cottage has night store heaters, convector heaters, a multi fuel stove and heated towel rails
- The area immediately surrounding the cottage is reasonably flat

The accommodation comprises the following:

Ground Floor

- The front door opens into the hall off which lead the dining room, sitting room and staircase

First floor

- Two bedrooms, one double and one twin, a bathroom with a shower over bath and a separate WC
- The cottage is furnished for four people and a cot

Pre-Arrival

- See the main webpage for booking and location details.

- Please contact us prior to booking if you have any specific access requirements
- Directions provided with booking

Approach

From the main coastal road which is steep and winding; off the coastal road, the cottage can be found behind black iron gates. It is sharp turn off the road through the gate, especially if approaching from Lynmouth. The gate opens inwards so there is sufficient room for a standard size car to park off road in front of the gate while it is opened

Arrival & Parking Facilities

- There is level, gravelled parking directly outside the cottage
- There is a car port to the side of the cottage.
- The key safe is to the left of the front door. It is operated by a combination lock mechanism. A torch is recommended, especially if arriving in the dark, as the numbers on the lock can be difficult to see.
- There is a sensor light covering the car parking area

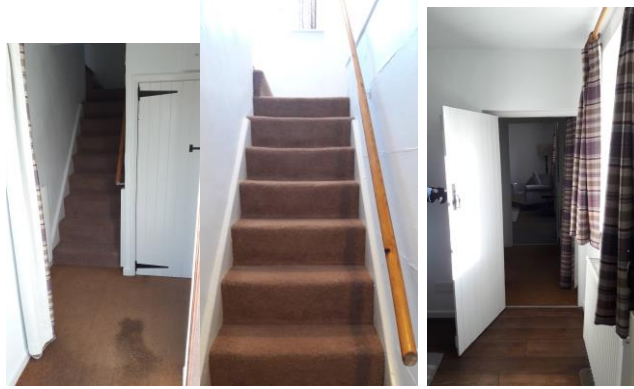


Entrance gate and parking area



Getting in (and out) of the cottage

- There is a low step of 50mm to the front door and a low wooden threshold
- The door has a clear opening width of 800mm
- The door opens into a hallway with stairs leading off here and two doors, one leading right to the sitting room, and the other left to the dining room and through to the kitchen
- The light switch is on the right hand (as entering) side on the wall return at a height of 1500mm



Entrance hall and staircase – view from kitchen

Getting around the cottage

- Level access throughout the ground floor
- Floor coverings are wood floor, coir matting in hallway and vinyl flooring in the kitchen
- Internal steps, with handrails, from landing to bedrooms, bathroom and WC (only one)
- Stairs are carpeted and there is a handrail to the right hand side
- The internal door widths are a minimum of 700mm wide.

Ground floor:

- Hall, sitting room, dining room, kitchen, utility room. Door from utility room leads to garden.

First floor

- Stairs with 9 deep steps with wooden handrail on right hand side leading to small landing area. The width of the stairs is 670mm wide. The treads are 260mm deep.
- From the landing, a left turn and up two deep stairs (total of 460mm) leads to the WC and bathroom. A right turn up two deep steps (total of 380mm) leads to the bedrooms
- The bedroom flooring is carpet
- The bathroom flooring and WC flooring is vinyl
- A stair gate is available in to fit in the brackets at the bottom of the stairs. Second stairgate is fitted outside twin room to prevent access to main stairway, WC and bathroom



Landing towards WC

Kitchen:

- Height of worktop is 920mm from floor level. Overhead cupboards are 400mm above work top. There are cupboards and drawer beneath work top
- Multiple power sockets around the work top
- Ceramic sink with lever taps
- Slot in electric cooker with double oven/grill and ceramic hob – 4 hot spots. Cooker hood with light
- Cordless kettle and toaster, fridge-freezer
- 450mm dishwasher
- Centre light and window which opens and with blinds overlooking garden gives good natural light



Kitchen

looking in to utility room

Utility Room

- Under counter washer dryer; worktop on which sits the microwave
- Coat hooks
- Large press-top waste bin
- Window with blind
- Door to rear of cottage

Sitting Room

- Spacious room with two windows – one with curtain the other with a blind
- Two-seater sofa with seat height 450mm, back height 500mm.
- Two wing chairs with a seat height of 450mm, back height 700mm
- Lighting comprises one table lamp, two floor lamps and a centre light
- One sideboard, one nest of tables (480mm), one side table (old commode)
- 32inch TV with an integrated DVD
- Two wall mounted round mirrors
- One wood burner – fire guard available
- Rug with anti-slip backing



Dining Room

- Dining table with 4 wooden chairs without arms
- There is a clear knee clearance of 600mm under the dining table
- Two drawer side dresser with lamp
- Rug with anti-slip backing
- Window with two openings and curtains
- Radio player/CD.



Upstairs

Landing

- Cupboard with hanging space
- Window to looking to rear of cottage with curtains and child protection safety loop

Twin Bedroom:

- Two 3' single divan beds both of which are next to a wall
- Bed lengths are 1900mm, bed heights of 650mm
- Wardrobe for this bedroom is on the landing area
- One ceiling light, one bedside lamp and one bed has a wall light with a pull switch, no bedside table
- Chest of drawers – with 3 drawers
- The circulation space around the beds is limited

- Low level recessed window with view to the front of the cottage. Fitted with child protection *safety loop and curtains*



Double Bedroom

- 5' double, feature iron bedstead in a central position in the room.
- Bed measures 5' / 1520mm x 6'7" / 2000mm long x 800mm mm high.
- Double built in wardrobe with hanging rail at 1500mm
- Bedside units each with a lamp
- Chest of drawers – two over 2 with mirror on top
- Wooden chair without arms
- Central pendant light and two bedside lamps
- Low level window with view to the front of the cottage. . Fitted with child protection safety loop and curtains



Bathroom:

- Standard size bath with integrated handgrips. Anti-slip bath matt.
- Adjustable height shower over bath – twist controls
- The internal width of the bath is 400mm wide, 400mm deep and 1500mm in length
- Hand basin is 800 mm from floor level with twist taps with mirror above the basin
- Shaver light above mirror
- Shelving units to both sides of the hand basin
- Heated towel rail
- Low window which opens. Fitted with child protection safety loops. Blind fitted with safety loop protection
- Cot stored in airing cupboard



Separate WC

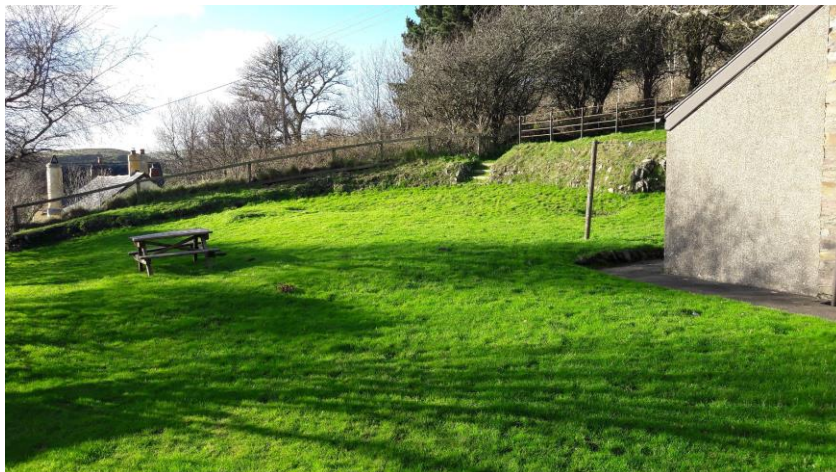
- WC is 440mm
- Cloakroom hand basin with twist taps – height 860mm
- Mirror

- Heated towel rail
- Window with a blind



Garden:

- There is a spacious, enclosed garden to side and front of cottage with a picnic table. The grassed area is uneven in places.
- 5 steps lead to the upper garden area.



Additional Information

- Assistance dogs are welcome at all our cottages
- In the event of a fire, it is the responsibility of the guests to evacuate themselves. Vibrating fire/smoke detectors are available if requested at time of booking. Please contact us if you have any other specific access requirements in this respect
- Mobile telephone signal is very unreliable at Countisbury Hill and depends on your network.

Facilities at all cottages

In addition to the standard equipment and facilities, each cottage is equipped with the following:

- Cordless kettle
- Chair with armrests in living room.
- Good reading light
- Large handle vegetable peeler
- Easy tin opener
- Non-slip mat for bath/shower
- Non-slip place mat
- Information in alternative formats (on request)

We aim to provide these items in all cottages but please check when booking as to their availability and to check if new items have been added to the list.

Specialist equipment

Other specialist equipment such as wheelchairs, bath seats, toilet frames etc may be available for loan or purchase from the local Red Cross loan centre. Please check this out before booking the Cottage and contact us if you require further information.

<http://www.redcross.org.uk/standard.asp?id=89425>

Future Plans to improve Access to NT Holiday Cottages

- We are currently in the process of writing accessibility guides for all our holiday cottages and improving access over time for all our guests. All feedback is very helpful in informing us of ways in which we can improve access to all our cottages. We welcome any comments or ideas from you about access at this cottage and thank you for taking the time to do this. Please do this in the most convenient way for you. See contact details below or information on website.

About the Accessibility Guide

- This Accessibility Guide is intended to provide key information about the cottage that may be particularly relevant to guests with disabilities. Please contact us prior to booking if you would like information that is more specific and we will be happy to oblige.

Phone: 0344 8002070

Email: cottages@nationaltrust.org.uk

Access for All at the National Trust

- The Access for All office works to improve access at all National Trust cottages and properties. The office welcomes comments and ideas on improving access.

Phone: 01793 818531

Email: accessforall@nationaltrust.org.uk

August 2019