

National Trust Cottages Accessibility Guide

Deben View, Tranmer House, Sutton Hoo, ref. 010037

Introduction

- A first floor apartment within Tranmer House
- Brick and timber built with apartment situated above staff apartment, which in turn is above exhibition space and offices, and next to another holiday apartment
- Sleeps four in two bedrooms
- Bathroom
- Communal grassed seating area shared with two other holiday apartments



© National Trust / Mike Henton

- The apartment is reached by an external staircase and then a further internal staircase

** Please note that all door widths given indicate the clearance required for access*

The apartment is arranged as follows:

- Front door opens onto the lobby and from there to an inner hall. From the lobby both bedrooms are accessed and from the lower inner hall the kitchen. Two steps lead from lower to upper hall from which are accessed the bathroom and sitting/dining room.

Pre-Arrival

- See the main webpage for booking and location details
- Please contact us prior to booking if you have any specific access requirements
- Directions provided with booking
- Please bring a torch if arriving in the dark as there are no streetlights here

Approach

- Tranmer House is accessed via a signposted and tarmacked road across the Sutton Hoo estate
- There is a river bordering the estate

Arrival & Parking Facilities

- There is a fenced gravel parking area by Tranmer House; Deben View is assigned one parking space
- A gate 880mm wide leads from the gravel parking area, which has a concrete border, rising 40mm to cobbles, which give way to a path
- The uneven stone tile path leads through a gap in a further fence 920mm wide to the external stairs
- The tiled exterior stairs are 170mm high and have anti-slip sections, a metal handrail and exterior lights: there are 5 steps up to a semi-landing, then a 90° turn left to 11 further steps up to a landing
- From the lobby, Deben View is clearly marked via an internal staircase
- The keysafe is on the wall within the main lobby



Entrance to gravel parking area by Tranmer House



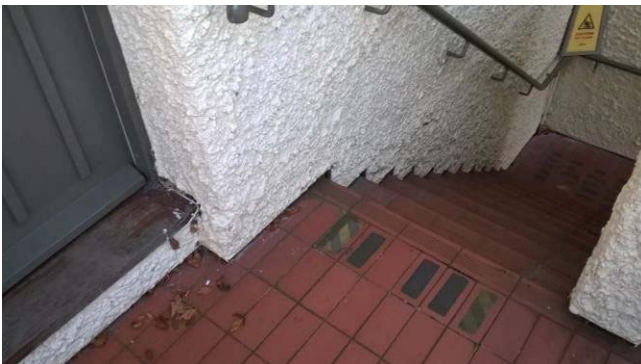
Gate from parking area to path to base of steps



Exterior stairs up to the apartment

Communal first floor lobby:

- From the exterior landing a door 850mm wide & 2.11m high gives access over a threshold 190mm up and then 60mm down to the lobby
- One wooden chair with a leather cushioned seat: seat height 480mm; seat back height 360mm
- Curved, tiled fireplace hearth: 90mm up
- Wooden sideboard: height 720mm
- Three keysafes on the wall
- Two pendant lights
- Wooden floor one entrance mat



Top of external stairs and door to communal lobby



Keysafes on wall of communal first floor lobby; door to Deben View on the left

Internal lobby:

- Second door on right leads to Deben View: 820mm wide & 2.04m high with 25mm wooden threshold
- Entrance door to Deben View to left - outward opening 860mm x 2030mm; high level glazed panels. 25mm wooden threshold



Entrance to internal lobby showing steps



Internal lobby towards front door and external lobby showing two steps down & wooden threshold

Getting in (and out) of the cottage

- Door: 820mm wide; 2.04m high; wooden threshold of 25mm

Getting around the apartment

Apartment lobby:

- Wooden floor with two steps to main level both 150mm
- Foam fire extinguisher floor level
- Door to both bedrooms and door to inner hallway
- Sideboard

Inner hall

- Door on door closer 890mm x 2030mm with 20mm threshold and a further 50mm lip
- Wooden Floor
- Two steps 100mm and 150mm lead to upper hall through opening 720mm x 1.9m
- Pendant light, emergency light and smoke detector on ceiling
- Door to cleaning cupboard 860mm x 2030mm
- Door to kitchen



Inner hall towards living room



From upper hallway towards lower hall and kitchen

Kitchen

- Fire glazed door on automatic closer 780mm x 2030mm with 20mm wooden threshold
- Tiled floor
- Range of floor and wall cabinets – counter height 600mm & cabinets 380mm above counter
- Zanuzzi fridge freezer, Bosch dishwasher, Ingeni counter microwave
- Belling floor standing cooker with 2 ovens
- Bloomberg washer/dryer
- Tables and four chairs – table 760mm with knee-space 680mm. Chair seat height 430mm and backs 460mm
- Steps to outside roof terrace 1st step 80mm 2nd step 150mm
- High chair seat height 560mm, back 390mm, tray height 750mm, footrest 360mm



Kitchen



Double bedroom

Double bedroom

- Door: 890mm wide; 2.03m high; wooden threshold: 20mm
- Queen size bed: 650mm high with space under; 1.5m
- Two bedside cupboards, each with a lamp: 720mm high
- Chest of drawers with mirror: 114mm high
- Wooden chair with upholstered seat 460mm back 480mm
- Two pendant ceiling lights
- Double glazed window facing west over parkland
- Smoke detector
- Wooden floorboards with two rugs

Super Kingsize Bedroom

- Door: 890mm wide; 2.03m high; wooden threshold 10mm up, then 30mm down
- Super kingsize bed 2m 700mm high with clear space under
- Chest of drawers with mirror: 890mm high
- Upholstered chair: 460mm seat height; 350mm back height
- Two bedside tables, each with a lamp: 730mm & 760mm high one with 2 drawers
- Wooden freestanding cupboard – 3 drawers low level, hanging height 1.84m
- In-built cupboard: 900mm access width; 1.70m hanging height (hooks)
- Pendant lights & smoke detector
- Double glazed window facing north over grassland towards the burial mounds
- Steps to outside roof terrace 100mm and 150mm
- Wooden floorboards with two small rugs



Super kingsize bedroom steps to terrace

Bathroom

Bathroom

- *Door: 790mm wide, 2.04m high; wooden threshold 30mm up*
- *Bath with shower attachment: 570mm high; width 440mm at bottom; length 1.25m at bottom*
- *Basin with crosshead taps, height: 830mm*
- *Toilet seat height: 440mm*
- *Shelf: 870mm high*
- *Wooden chair: seat height 440mm; seat back height 400mm*
- *Marble-topped wooden cabinet: 760mm high*
- *Heated towel rail top bar 900mm height.*
- *3-armed pendant light & wall mounted extractor*
- *Double glazed window facing south over grassland with trees towards the burial mounds*
- *Tiled floor*



Sitting room:

- *Door: 770mm wide; 2.04m high; wooden threshold 10mm up, 20mm down*
- *One two two-seater fabric sofas and one three seater fabric sofa: seat height 410mm; seat back height 570mm*
- *Fireplace (no longer in use): marble hearth and surround: 10mm up and wooden mantle*
- *Side table bearing television: 660mm high*
- *Oak side table 620mm*
- *Round oak side table with lamp 770mm height*
- *Coffee table with drawer height 500mm, drawer 400mm*
- *Wooden dresser: 1.34m high*
- *Three double wall lights*
- *Two double glazed windows facing south and west across tree-dotted grassland towards woods and the River Deben*
- *One double glazed French Door to terrace – sealed closed*
- *Standard lamp with shade – switch height 1470mm*
- *Wooden floorboards and one large Persian style rug*



Communal garden

Outside

- **Fenced, grassed area** shared with two other apartments with views down the valley to the River Deben:
 - Metal table: 660mm knee-space
 - Four metal chairs: seat height 420mm; seat back 490mm high
- **Bin store** across the paved courtyard from the base of the exterior stairs

Additional Information

- Assistance dogs are welcome at all our cottages
- In the event of a fire, it is the responsibility of the guests to evacuate themselves. Vibrating fire / smoke detectors are available if requested at time of booking. Please contact us if you have any other specific access requirements in this respect.

Facilities at all cottages

The National Trust aims to expand the list of accessible /equipment/items available at each cottage and these may include:

- Cordless kettle
- Hollowfibre bedding
- Chair with armrests
- Good reading light
- Large handle vegetable peeler
- Easy tin opener
- Non-slip mat for bath/shower
- Non-slip place mat
- Easy jar opener
- Information in alternative formats (on request)

Please note that we cannot guarantee that all items will be available at the time of your visit. Please enquire at the time of booking regarding any particular requests.

Specialist equipment

Other specialist equipment such as wheelchairs, bath seats, toilet frames etc may be available for loan or purchase from the local Red Cross loan centre. Please check this out before booking the cottage and contact us if you require further information.

<http://www.redcross.org.uk/standard.asp?id=89425>

Future Plans to improve Access to NT Holiday Cottages

- We are currently in the process of writing accessibility guides for all our holiday cottages and improving access over time for all our guests. All feedback is very helpful in informing us of ways in which we can improve access to all our cottages. We welcome any comments or ideas from you about access at this cottage and thank you for taking the time to do this. Please do this in the most convenient way for you. See contact details below or information on website.

About the Accessibility Guide

- This Accessibility Guide is intended to provide key information about the cottage that may be particularly relevant to guests with disabilities. Please contact us prior to booking if you would like information that is more specific and we will be happy to oblige.
Email: cottages@nationaltrust.org.uk
Phone: 0344 800 2070

Access for All at the National Trust

- The Access for All office works to improve access at all National Trust accommodation and properties. The office welcomes comments and ideas on improving access.
Phone: 01793 818531
Email: accessforall@nationaltrust.org.uk

October 2019