

Cottage Ref:011058

**Lower Pentire Barn**

Loe Pool  
HELSTON  
Cornwall

**Introduction**

- Stone built 18<sup>th</sup> century single storey barn attached to the farmhouse.
- Slate, Carpet and vinyl floors and vaulted ceiling with beams
- Overlooking Loe Pool in a rural setting
- One level accommodation
- Night storage and convector heaters.
- Enclosed garden with picnic table and integral bench

**Pre-Arrival**

- See the main webpage for booking and location details.
- Please contact us prior to booking if you have any specific access requirements.
- Directions provided with booking

## Arrival & Parking Facilities



- Lower Pentire Barn is reached by a narrow and sometimes rough track. The parking is behind the Barn up a sloped part hard surface part grass track. There is space by the gate to park a car for unloading.

## Getting in (and out) of the cottage



- A wooden gate leads into the garden which is 900mm wide and a paved path leads to the front door. Combination key safe on wall to left of front door.

## Getting around the cottage

### Ground floor:

- The Cottage is arranged as follows:
- Front door straight into open plan dining, lounge and kitchen area. Door to lobby with twin bedded room and bathroom off.

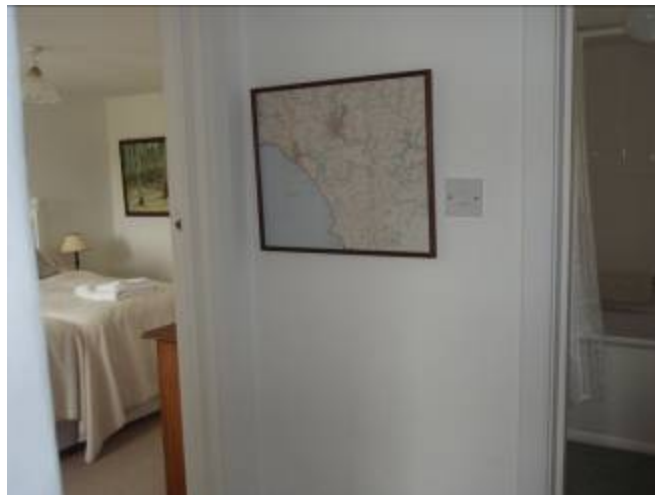
### Lounge/dining room/kitchen – open plan:



- Wooden door 800 mm wide with step up part granite part door frame 300 mm high.
- Open plan living space with high vaulted ceiling with beams, slate floor with large rug.
- 13 spot lights, 1 wall light, 1 double standard lamp, 3 lamps and emergency light.
- 3 windows with deep sills 2 to front of property overlooking garden and Loe Pool 900mm high, 1 to rear garden 1000mm high.

- Wooden square table with drop leaf 700mm high , knee clearance 560mm and 670mm
- 3 wooden chairs, 2 with arms and rush seating, 400mm, 440mm and 450mm seat height.
- Built in wooden storage cupboard with 2 doors 760mm wide each.
- Wooden side table 780mm high, 680mm long and 600mm wide.
- Log Burning stove.
- TV, DVD.
- Radio, CD player.
  
- Two seater sofa 450mm seat height.
- 1 winged armchair 450mm seat height.
- 2 wooden storage boxes 500mm high, 1125mm long and 380mm wide and 380mm high, 780mm long and 380mm wide.
- 2 wooden foot stools 17cm high
- 1 rush stool 360mm high.
- Kitchen worktops 900mm high.
- Fridge with ice box.
- Combined washer/drier.
- 4 hob electric cooker.
- Microwave.
- Toaster.
- Cordless kettle.

## **Inner Hall:**



- Wooden door from living space 800mm wide.
- 1 ceiling light
- Switch for water heater.
- 2 wooden doors. 1 to bathroom, other to bedroom.



**Bathroom:**

- Wooden door 800mm wide.
- 1 window with deep sill 1003mm high.
- 1 ceiling light
- Heated towel rail.
- WC 400mm high.
- Grab rail next to WC 700mm high.
- Washbasin 780mm high
- Bath 560mm high, 1160mm long, 690mm wide with grab rail the length of bath.
- Wall mirror with light and shaver point.
- Extractor fan.
- Electric wall heater.

**Twin Bedroom:**

- Wooden door 800mm wide.
- 2 windows with deep sills overlooking garden and Loe Pool 1000mm high.
- 1 ceiling light and 2 bedside lamps.
  
- 2 single beds 600mm high, 2000mm long and 1000mm wide.
- 2 wooden bedside cabinets 400mm high
- Wooden chest drawers 860mm high, 1107mm long and 480mm wide.
- Built in wooden wardrobe 1150mm long with 2 doors.

## Garden



- Enclosed by wall with lawn area and slabs for the picnic table. At the back of the property is a grassed area with a rotary washing line.

## Additional Information

- Assistance dogs are welcome at all our cottages
- In the event of a fire, it is the responsibility of the guests to evacuate themselves. Vibrating fire/smoke detectors are available if requested at time of booking. Please contact us if you have any other specific access requirements in this respect.

## Facilities at all cottages

In addition to the standard equipment and facilities, each cottage is equipped with the following:

- Cordless kettle
- Chair with armrests in dining room and living room.
- Good reading light
- Large handle vegetable peeler
- Easy tin opener
- Non-slip mat for bath/shower
- Non-slip place mat
- Easy jar opener
- Information in alternative formats (on request)



We aim to provide these items in all cottages but please check when booking as to their availability and to check if new items have been added to the list.

### **Specialist equipment**

Other specialist equipment such as wheelchairs, bath seats, toilet frames etc may be available for loan or purchase from the local Red Cross loan centre. Please check this out before booking the Cottage and contact us if you require further information.

<http://www.redcross.org.uk/standard.asp?id=89425>

### **Future Plans to improve Accessibility to National Trust Holiday Cottages**

- We are currently in the process of writing accessibility guides for all our holiday cottages and improving access over time for all our guests. All feedback is very helpful in informing us of ways in which we can improve access to all our cottages. We welcome any comments or ideas from you about access at this cottage and thank you for taking the time to do this. Please do this in the most convenient way for you. See contact details below or information on website.

### **About the Accessibility Guide**

- This Accessibility Guide is intended to provide key information about the cottage that may be particularly relevant to guests with disabilities. Please contact us prior to booking if you would like information that is more specific and we will be happy to oblige.

Email: [cottages@nationaltrust.org.uk](mailto:cottages@nationaltrust.org.uk)

Phone: 0344 8002070

### **Access for All at the National Trust**

- The Access for All office works to improve access at all National Trust cottages and properties. The office welcomes comments and ideas on improving access.

Phone: 01793 818531

Email: [accessforall@nationaltrust.org.uk](mailto:accessforall@nationaltrust.org.uk)

July 2011