

## National Trust Cottages Accessibility Guide

**Cottage name: Stable Apartment**

**Address: Felbrigg Hall, Cromer Road, Felbrigg Norfolk NR11 8PR**

**Ref: 011020**

### Introduction



Get cosy in this one bedroom, open plan apartment. It's located on the east side of the grand 17<sup>th</sup> century Felbrigg Hall with sweeping parklands and ancient woodlands unfolding from your doorstep. Inside the neo-Jacobean style apartment, high timber-cruck ceilings create an atmospheric and airy space

### Pre-Arrival

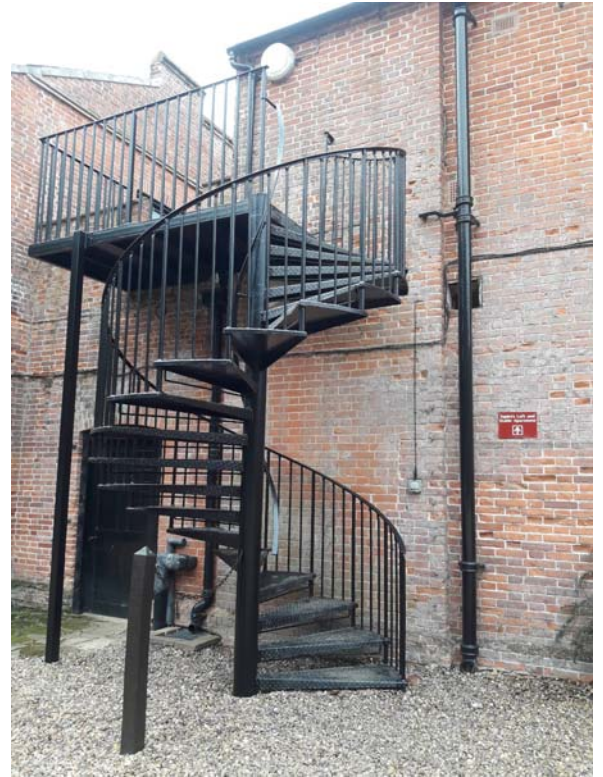
- See the main webpage for booking and location details
- Please contact the Contact Centre 0n 0844 800 2070 prior to booking if you have any queries or specific access requirements
- Directions are provided with booking

### Approach

- Enter the Felbrigg Hall estate through the main gates. Follow the drive to the main car park. Carry on through the car park and take the drive to the right leading to the back of the Hall. The apartment is found at the top of the second black wrought iron staircase on the left. Stable Apartment is found on the right at the top of the spiral staircase.
- The parking is in front to the right of the spiral staircase (as signposted)

## Getting in (and out) of the apartment

- The apartment is accessed via a wrought iron spiral staircase
- First step is 100mm height thereafter each stair is 190mm height with 20 steps to first landing
- Concrete step 190mm height, 320mm depth and 160mm step down to decking/landing area
- Key safe to right of doorway
- Threshold step 80mm height, 160mm deep and 60mm step down
- 20mm step down from wooden threshold
- Entry doorway 680mm width
- 1260mm clearance from entry door to counter front
- 940mm access into main living room
- Matting to entry doorway leading onto carpet



## Getting around the apartment – apartment is on one level

### Sitting Room area

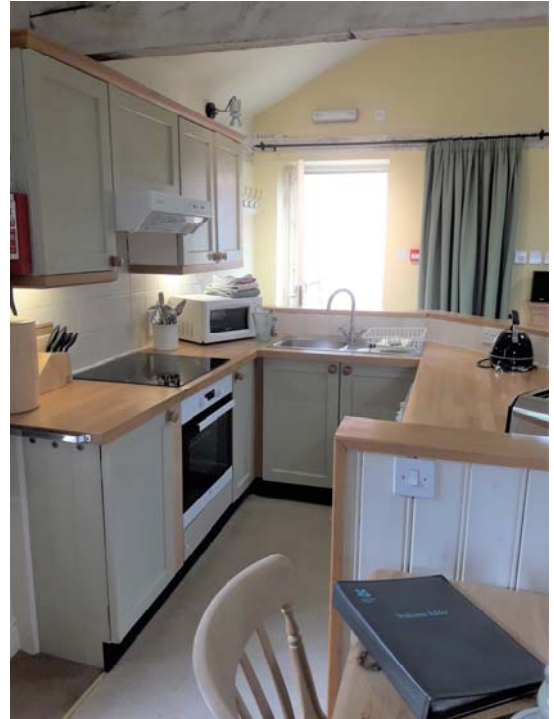


- Carpet to floor
- Shelving unit with books and games
- Easy chair and 2 seater sofa 440mm to seat height
- TV cabinet with flat screen tv and remote control and dvd player 530mm height

- Coffee table 470mm height
- Dining table 770mm height
- 2 dining chairs 460mm height
- Spotlights and 1 side lamp

## Diner/kitchen (open plan)

- Range of base units 900mm height
- Range of wall units
- Under counter fridge
- Under counter washing machine
- Integrated electric oven with integral grill
- Halogen hob top
- Toaster, cordless kettle and microwave oven
- Mixer tap to sink
- Lino to floor
- 2 spotlights and under counter lights



## Bedroom (open plan)

- Wrought iron bed 1350mm width, 2010mm length and 620mm height
- Chest of drawers 790mm height
- 2 bedside cabinets 600mm height
- Double wardrobe
- Linen basket
- Folding room screen
- 2 spotlights
- 2 bedside lights



## Bathroom

- Doorway from living room into bathroom 740mm wide
- Carpet tread to threshold
- Lino to floor
- Heated towel rail
- Close coupled wc 430mm seat height
- 300mm clearance to either side of wc
- Wash hand basin 800mm height
- Bath external 540 height, internal length 1300mm length and 350mm depth
- Grab handles to bath
- Shower mixer attachment to bath 1740mm to shower head attachment on wall
- Clear glazed half shower door to bath
- Shaver socket to left of wash basin 1100mm height from floor
- Central light and light over wash basin



Door from living room into cupboard housing water tank and vacuum cleaner

## Garden



- There is a shared decking area overlooking the garden centre below with garden furniture

## **Additional Information**

### **Facilities at all cottages and apartments**

The National Trust aims to expand the list of accessible /equipment/items available at each cottage and these may include

- Cordless kettle
- Hollowfibre bedding
- Chair with armrests
- Good reading light
- Large handle vegetable peeler
- Easy tin opener
- Non-slip mat for bath/shower
- Non-slip place mat
- Easy jar opener
- Information in alternative formats (on request)

Please note that we cannot guarantee that all items will be available at the time of your visit. Please enquire at the time of booking regarding any particular requests.

### **Specialist equipment**

Other specialist equipment such as wheelchairs, bath seats, toilet frames etc may be available for loan or purchase from the local Red Cross loan centre. Please check this out before booking the Apartment and contact us if you require further information.

<http://www.redcross.org.uk/standard.asp?id=89425>

### **Future Plans to improve Access to National Trust Holiday Accommodation**

- We are currently in the process of writing accessibility guides for all our holiday cottages and bunkhouses and improving access over time for all our guests. All feedback is very helpful in informing us of ways in which we can improve access. We welcome any comments or ideas from you about access at this apartment and thank you for taking the time to do this. Please do this in the most convenient way for you. See contact details below or information on website.

### **About the Accessibility Guide**

- This Accessibility Guide is intended to provide key information about the accommodation that may be particularly relevant to guests with disabilities. Please contact us prior to booking if you would like information that is more specific and we will be happy to oblige.

Email: [cottages@nationaltrust.org.uk](mailto:cottages@nationaltrust.org.uk)

Phone: 0344 8002070



## **Access for All at the National Trust**

- The Access for All office works to improve access at all National Trust accommodation and properties. The office welcomes comments and ideas on improving access.

Phone: 01793 818531

Email: [accessforall@nationaltrust.org.uk](mailto:accessforall@nationaltrust.org.uk)

Date September 2019