

National Trust Cottages Accessibility Guide



Cottage Name: **Garden Cottage at Polesden Lacey Home Counties**
Cottage Ref: 001015
Category:

Introduction

- 19th Century detached cottage located within the Polesden Lacey Estate and is just 4 minutes walk to the main House.
- Access in the private garden and the property grounds including the nearby Rose Garden
- Situated on level ground. Polesden Lacey has also made many access improvements over the years.
- LPG Gas central heating (In brochure)
- Accommodates 6 + cot
- Free phone in the cottage – local calls only
- Free WiFi

The Cottage is arranged as follows:

Ground Floor:

- Sitting room with open fire, kitchen/dining room, utility room, 1 twin en-suite with shower room, one double bedroom, separate lavatory.

Stairs to first floor

- 12 risers with 2 stair fan at the bottom. Staircase 890mm wide. Mop-stick handrail at 780mm from riser. Carpeted.
- Small upper landing and inter-level steps on the first floor
- One step of 220mm leading up to double bedroom.
- 2 further steps up to bathroom of 150 and 160mm high.

First Floor:

- 1 double bedroom (Kingsize), family bathroom with bath and shower over bath.

Pre-Arrival

- See the main webpage for booking and location details.
- Please contact the National Trust Contact Centre prior to booking if you have any specific access requirements or queries.
- Directions to the cottage are provided on booking

Arrival & Parking Facilities

- Rural location. Unmade road on approach, some potholes. Paths are generally wide around the cottage itself. (i.e. <900mm and level.
- Parking near to the cottage for 2 cars
- Path to cottage at 900mm clear width. Firm and level surface with light gravel dressing.
- Other routes around the cottage are of paving slabs.

Getting in (and out) of the cottage

- Entry is to the side of the single storey extension to this two storey building. The key safe is located to the left of the kitchen door.
- Threshold of 75mm at kitchen door used as main entrance. (Main door at the front not generally used and has a step of in excess of 180mm)
- Single staircase – emergency egress route through lounge and kitchen or via the front door.

Getting around the cottage

Ground floor:

- Large kitchen/diner leads onto the sitting room (level access) – with a straight approach. Door width into the lounge of 790mm. Terracotta tiles. Loose coir mat on the inside.
- Utility room with tiled floor and with washing machine is located off the main kitchen. Doorway clear width of 750mm. No step.
- Level access into double bedroom.
- Door into the inner lobby opens off the sitting room at 790mm wide but the fireplace shelf reduces the available space to 740mm.
- Door to twin bedroom leading from the inner lobby. The twin-bedroom has an en-suite shower and WC – no threshold at doorway.
- Door into the shower room is 650mm wide
- Small inner lobby also leads to the stairs. Irregular shape and may make turning into the twin room difficult if using anything other than a manual wheelchair.
- Surfaces are generally of terracotta tiles in wet areas with rugs or timber floor-boards with rugs elsewhere.

First floor:

- One large double bed-room
- Separate family bathroom

In detail:

Kitchen/Diner



- Very large space with modern kit-out. Large kitchen/dining table to seat 4 with ease and 6 with extension in place.
- Butler sink
- Oven/Hob at 890mm. Clear controls
- Ceramic hob
- Height of worktop is 910mm from floor
- Fridge/Freezer is contained in a cupboard within the kitchen
- A pantry is located off the kitchen with tiled floor

& contains the washing machine.

- Controls are easy to read.
- Good lighting in this area, with lots of natural light from large windows and artificial lights (low-energy) with dimmer switches.

Sitting Room

- Door at 790mm.
- Lounge with large window allowing lots of natural light
- 2 double settees with straight arms 450mm to seat.
- Single wing-chair. Straight arms. 490mm to seat
- Wall lights and small standard lamp (low-energy bulbs)
- Illumination levels good
- Open fire
- Timber floor-boards and rugs

Twin Bedroom (Ground Floor)

- Reached through the Sitting Room
- Divan beds at 600mm (H) and 2.0m (L)
- Bed-side table and light between beds
- Natural light from the large window overlooking the gardens
- En-suite bathroom with shower over

En-suite shower room (Ground Floor)

- Door width 650mm
- 2670 (L) x 1670mm (W) Good circulation space
- h. Concertina shower screen
- Long riser bar
- Sink at 810mm with cross-taps. Light over sink
- WC at 430mm – high cistern with chain
- Rail to wall

Double bedroom (Ground Floor)

- Bed with space under. 600mm to top
- Moderate circulation space
- Bed-side lights

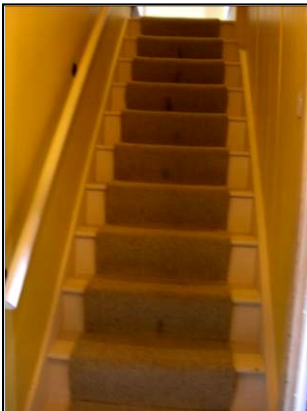
Separate WC

- WC height at 430mm to seat.
- Not accessible as inward opening door.

Telephone & WiFi

- Telephone – free local calls. Accessible

Stairs to First Floor



- Twelve steps, carpeted.
- Bannister is to one side only at 840mm.
- Illumination levels are reasonable on the stairway but low-energy bulbs used which offer a yellow spectrum light. They take some time to warm up.

Double Bedroom (First Floor)

- 5ft bed – 600mm (H) and 2.0m (L)
- Bed-side light – good instant illumination 95lux at pillow
- Bed-room chair (no arm rests)
- 2 sets of double sockets
- Timber floor boards and rug
- Low window with views over garden

Family Bathroom

- Large roll top bath.
- Mixer shower attachment over bath
- WC with high level cistern
- Timber floor-boards and rug
- Large room with very good circulation

Garden

- Two patio areas one outside the kitchen and private gardens.
- Route onto the main estate.
- Mostly level

Additional Information

- Assistance dogs are welcome at all our cottages
- In the event of a fire, it is the responsibility of the guests to evacuate themselves. Vibrating fire/smoke detectors are available if requested at time of booking. Please contact us if you have any other specific access requirements in this respect.

Facilities at all cottages

The National Trust aims to expand the list of accessible /equipment/items available at each cottage and these may include

- Cordless kettle
- Hollowfibre bedding
- Chair with armrests
- Good reading light
- Large handle vegetable peeler
- Easy tin opener
- Non-slip mat for bath/shower
- Non-slip place mat

- Easy jar opener
- Information in alternative formats (on request)

Please note that we cannot guarantee that all items will be available at the time of your visit it may be helpful to speak to the NT Contact Centre if you have any other specific access requirements in this respect.

Specialist equipment

Other specialist equipment such as wheelchairs, bath seats, toilet frames etc may be available for loan or purchase from the local Red Cross loan centre. Please check this out before booking the Cottage and contact us if you require further information.

<http://www.redcross.org.uk/standard.asp?id=89425>

Shopmobility

The Swan Centre, High Street, Leatherhead 01372 362400

Waltons Homecare Walton St, Walton-on-the-Hill 0844 2880300

Future Plans to improve Access to National Trust Holiday Cottages

- We are currently in the process of writing Accessibility guides for all our holiday cottages and improving access over time for all our guests. All feedback is very helpful in informing us of ways in which we can improve access to all our cottages. We welcome any comments or ideas from you about access at this cottage and thank you for taking the time to do this. Please do this in the most convenient way for you. See contact details below or information on website.

About the Accessibility guide

- This Accessibility guide is intended to provide key information about the cottage that may be particularly relevant to guests with disabilities. Please contact us prior to booking if you would like information that is more specific and we will be happy to oblige.

Email: cottages@nationaltrust.org.uk

Phone: 0344 800 2070

Access for All at the National Trust

- The Access for All office works to improve access at all National Trust cottages and properties. The office welcomes comments and ideas on improving access.

Phone: 01793 818531

Email: accessforall@nationaltrust.org.uk

January 2019