

## National Trust Cottages Accessibility Guide

The Apartment  
Greenway  
Nr Brixham  
Devon



Property Ref: 012044

### Introduction

The apartment occupies part of the first and second floors of Greenway with some rooms above the open visitor part of the mansion house where there may be background noise during visitor opening hours.

Sleeps up to 8 people in 4 bedrooms with 3 communal bathrooms with showers

The apartment is spacious and has good circulation throughout with wide doors. The staircases to and within the property are long (and wide) and have angular winder steps

The apartment has a private garden area but also has access to the wider Greenway visitor gardens where there are areas with steep banks and open water features with paths leading to the river

The property has oil fired central heating.

The Cottage is arranged as follows:

#### Ground floor

Entrance into the old pantry with a staircase leading to the first floor

#### First floor

One double bedroom (with king size bed), bathroom with separate shower, utility room

#### Second Floor

Kitchen/dining room, sitting room, three bedrooms (1 double with 5' bed and 2 twins), two bathrooms with separate showers

## Pre-arrival

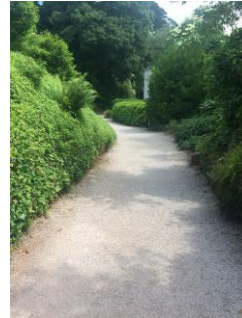
- See the main webpage for booking and location details.
- Please contact us prior to booking if you have any specific access requirements.
- Directions provided with booking

## Approach

The property is approached and signposted off a main road via well maintained undulating and winding country lanes. The lanes can be bounded by hedgerows and hidden vegetation-covered stone walls. The lanes can be narrow but there are plenty of passing spaces. The property can also be approached by foot, with the coastal footpath nearby, up a steep winding footpath.

## Arrival & parking facilities

- There is allocated parking for up to 3 cars located after the visitor carpark and just before the pedestrian entrance to Greenway
- The parking area is in a walled area and is level with compacted fine gravel and is approx. 100 metres from the apartment entrance along relatively level wide pathways comprising of tarmac, then fine gravel with a small section of worn cobblestones and wide gate
- There is outside lighting at the apartment but if arriving after dark it is advisable to have a torch



## Getting in (and out) of the cottage

- There are two steps down to the entrance to the Apartment, step height 160mm, tread 320mm to a space outside the entrance door 1120mm by 1160mm
- There is a combination lock key box beside the door at a height of 1300mm
- Entrance door width 770mm, opening into a wide communal hallway with flagstone floor



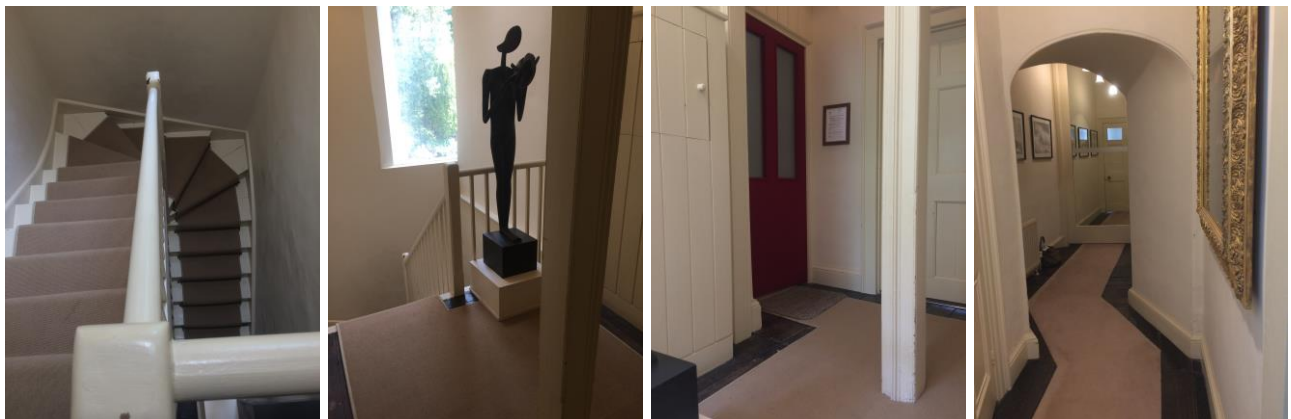
## Getting around the cottage

### Ground floor:

- Communal hall with flagstone floor, width 1450mm reducing to 1200mm at the bottom of the stairs, pendant light, rubber backed mat

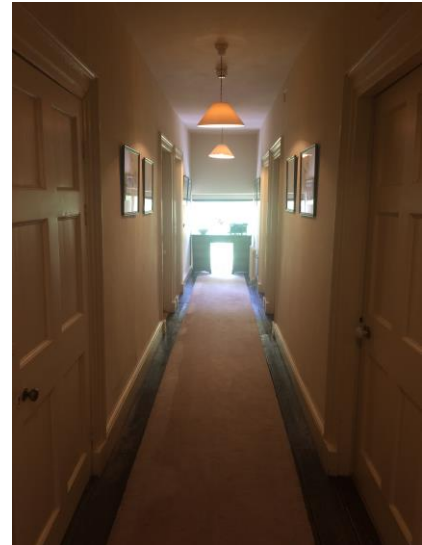
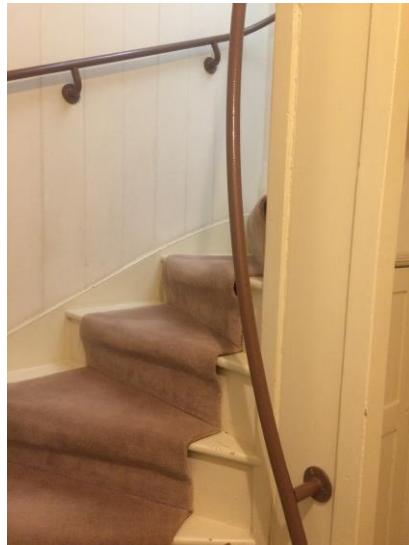
### First floor:

- Stairs to the first floor are half turn angular winders, wooden with a carpet runner. Step height 190mm, tread 240mm, width 900mm. Stair length is approximately double the length of domestic stairs as it is a mansion house with generous ceiling heights
- Central banister
- Large window with good natural light, pendant light
- Landing with wooden floorboards and a mat. Central pillar with a circulation width of 840mm around it
- Private Apartment entrance door, width 960mm, heavier fire door
- Internal staggered hallway, width 1150mm, floorboards with central carpet runner
- High round window, 2 x pendant lights



## Second floor:

- Three quarter turn angular winder stairs to the second floor. Step height 200mm, central tread 250mm, width 850mm. Wooden stairs with central carpet runner, handrail on the wall and central hand rails
- Side window on the stairs offering natural light plus pendant lights
- 'L' shaped landing 1200mm width with a large window each end, central carpet runner and pendant lights



## First floor:

### Utility room

- Door width 920mm, fire door, twist door knob
- 4 x steps down, step height 210mm, tread 240mm, width 920mm
- Linoleum floor
- Separate under-counter washing machine and tumble dryer
- Worktop height 920mm
- Ironing board, clothes drying rack
- Good circulation
- Skylight, pendant light

### Double bedroom

- Door width, 930mm, fire door, level threshold, twist door knob
- Wooden floor with central rug with anti-slip underlay
- Bed width 1750mm, length 2050mm, height 600mm, space under height 200mm
- 2 x side tables, 2 x bedside lamps, under lampshade on/off switches and mains switch
- 1 x floor lamp with on/off switch under the lampshade
- Ceiling pendant light
- Window with views over private garden area and visitor gardens beyond

- Wardrobe, chest of drawers and dressing table
- Wooden chair with upholstered seat pad and arms, seat height 460mm
- Spacious with good circulation



## Bathroom

- Door width 920mm, door opens into the hallway
- 2 x wooden steps down, step height 210mm, tread 240mm, width 920mm, side rail
- Linoleum floor
- Pull light switch cord is in the bathroom after the steps
- Toilet, sink, bath, double shower
- Toilet height is 430mm with lever handle on the right
- Bath height 630mm, twist taps with washers
- Sink height 830mm, twist taps with washers
- Double shower, step up height 100mm, entrance to shower width 570mm, shower controls height 1230mm
- Shaver socket 1300mm
- Window overlooking garden, 2 x ceiling lights
- Good circulation
- Obscure window over woodland to the side



## Second floor:

### Kitchen

- Door width 940mm, fire door, level threshold, twist door knob
- Linoleum floor
- Height of worktop 950mm
- Fitted kitchen with electric double range oven and ceramic hob, separate under counter fridge and freezer, dishwasher, microwave
- Sink, mixer twist taps with washers
- 2 x pendant lights
- Windows over gardens and down to the river
- Table height 760mm, clearance space underneath 620mm
- 10 x wooden chairs, seat height 470mm
- Spacious with good circulation



### Sitting room

- Door width 950mm, fire door, level threshold, twist door knob
- Sloping floor with carpet
- 2 x 2 seater settees with a seat height of 460mm
- 1 x winged back armchair, seat height 430mm
- 2 x armchairs, seat height 400mm
- 1 x table lamp with mains and under lampshade switch
- 1 x table lamp with under lampshade on/off switch
- 1 x floor lamp with mains and under lampshade switch
- 2 x floor lamps with under lampshade on/off switch
- 2 x windows with views over the front garden and down to the river
- 1 window with views over the private garden area, visitor garden beyond and down to the river
- Spacious room with good circulation, the furniture and its arrangement can be restrictive in places but can be moved



## Twin bedroom

- Door width 920mm, fire door, level threshold, twist door knob
- Carpet
- Twin beds width 900mm, length 1950mm, height 500mm, clearance underneath 190mm
- 2 x bedside table lamps with on/off switches under the lampshade
- Pendant light
- Window with views over the front garden and down to the river
- 2 x sets of drawers, one with cupboard above (tallboy)
- Chair, seat height 350mm
- Circulation at the end of the beds 830mm, width between beds 650mm



## Twin bedroom

- Door width 940mm, fire door, level threshold, twist door knob
- Carpet
- Twin beds width 900mm, length 1950mm, height 600mm, clearance underneath 220mm
- 2 x bedside table lamps with on/off switches under the lampshade
- Pendant light
- Window with views over the front garden and down to the river
- 2 x sets of drawers, one with cupboard above (tallboy)
- Chair, seat height 470mm
- Circulation at the end of the beds 450mm and width between beds 840mm



## Double bedroom

- Door width, 940mm, fire door, level threshold, twist door knob
- Carpet
- Double divan bed, width 1500mm, length 2000mm, height 600mm
- 2 x side tables, bedside lamps with under lampshade on/off switches
- Pendant light
- Window with views over front garden and down to the river
- Wooden chair with an upholstered seat pad and arms, seat height 450mm
- Chest of drawers, and chest of drawers with cupboard above (tallboy)
- Good circulation, space at the end of the bed 600mm





## Bathroom

- Door width 860mm, tapered raised threshold height 70mm, base width 270mm, top width 180mm
- Linoleum floor  
Toilet, sink and bath with separate shower
- Toilet height is 450mm with chain flush set at a height of 1700mm
- Bath height 660mm, twist taps with washers
- Shower cubicle, step up (to wooden platform) height 140mm, platform width 800mm by 700mm, further step up to shower 130mm, shower tray width 800mm, with rubber mat, pivot door. Shower controls at a height of 1250mm
- Sink height 840mm, twist taps with washers
- Shaver socket height 1300mm
- Ceiling light
- Good circulation with a minimum with between the bath and edge of the shower 730mm
- Window over back of the garden



## Bathroom

- Door width 860mm, tapered raised threshold height 70mm, base width 270mm, top width 180mm
- Linoleum floor  
Toilet, sink and bath with separate shower cubical
- Toilet height is 430mm with chain flush at a height of 1500mm
- Bath height 620mm, twist taps with washers
- Shower cubicle, step up (to wooden platform) height 140mm, platform width 800mm by 700mm, further step up to shower 130mm, shower tray 730mm by 780mm, with rubber mat, pivot door. Shower controls at a height of 1250mm
- Sink height 800mm, twist taps with washers
- Shaver socket 1300mm
- Ceiling light
- Good circulation
- Window with views over the back of gardens



## Garden

- Access to the garden is via the entrance door and through a gated area. It is private but not enclosed
- Private garden area comprises of lawn and shrubs and is adjacent to a fenced off empty swimming pool that may contain levels of water after rain
- Access is also freely available to the Greenway gardens, where there are some steep slopes, water features and access to the river-side

## Additional Information

- Assistance dogs are welcome at all our cottages
- In the event of a fire, it is the responsibility of the guests to evacuate themselves. Vibrating fire/smoke detectors are available if requested at time of booking. Please contact us if you have any other specific access requirements in this respect.

## Facilities at all cottages

The National Trust aims to expand the list of accessible /equipment/items available at each cottage and these may include

- Cordless kettle
- Hollowfibre bedding
- Chair with armrests
- Good reading light
- Large handle vegetable peeler
- Easy tin opener
- Non-slip mat for bath/shower
- Non-slip place mat
- Easy jar opener
- Information in alternative formats (on request)

Please note that we cannot guarantee that all items will be available at the time of your visit. Please enquire at the time of booking regarding any particular requests.

## **Specialist equipment**

Other specialist equipment such as wheelchairs, bath seats, toilet frames etc may be available for loan or purchase from the local Red Cross loan centre. Please check this out before booking the Cottage and contact us if you require further information.

<http://www.redcross.org.uk/standard.asp?id=89425>

## **Future Plans to improve Accessibility to National Trust Holiday Cottages**

We are currently in the process of writing accessibility guides for all our holiday cottages and improving access over time for all our guests. All feedback is very helpful in informing us of ways in which we can improve access to all our cottages. We welcome any comments or ideas from you about access at this cottage and thank you for taking the time to do this. Please do this in the most convenient way for you. See contact details below or information on website.

## **About the Accessibility Guide**

This Accessibility Guide is intended to provide key information about the cottage that may be particularly relevant to guests with disabilities. It is reviewed annually. Please contact us prior to booking if you would like more detailed information and we will be happy to oblige.

Phone: 0344 800 2070

Email: [cottages@nationaltrust.org.uk](mailto:cottages@nationaltrust.org.uk)

## **Access for All at the National Trust**

We continue to work to improve accessibility at all our holiday cottages. We welcome comments and ideas on improving access.

Phone: 0344 800 2070

Email: [cottages@nationaltrust.org.uk](mailto:cottages@nationaltrust.org.uk)

Date 21 June 2018