

National Trust Cottages Accessibility Guide Template (Aug 2019)

The Lodge
Hardcastle Craggs
Hebden Bridge
Yorkshire

REF: 020005



Introduction

- The Lodge is a two-bedroom cottage located in a wooded valley about two miles above Hebden Bridge at the entrance to the Hardcastle Craggs estate.
- The Cottage is all on the ground floor and has a twin and a double bedroom.
- The Cottage has gas central heating and there is a multi-fuel stove in the sitting/dining room.

Pre-Arrival

- See the main webpage for booking and location details.
- Please contact us prior to booking if you have any specific access requirements.
- Directions provided with booking.
- Please bring torch if arriving in dark, as there are no streetlights here. There is external lighting at various points around the cottage. Please refer to additional information on page

Approach

- The approach to the cottage is along a narrow country lane to the small NT car park for Hardcastle Craggs following the directions provided with the booking confirmation. The cottage is directly opposite the NT car park.
- The cottage stands alone set back from the left side of the road as approaching.
- The cottage has a garden gate leading to the front door and a large wooden gate just up from this which gives vehicular access to the parking area (width 3.06m). There is an unfenced drop to the garden below from the start of the driveway. Please refer to additional information on page 7.



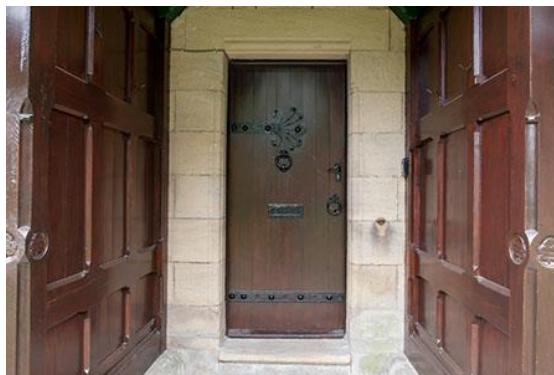
Arrival & Parking Facilities



- The parking area (for up to two cars) is next to the cottage on reasonably level and firm ground.
- There is a short steep slope down from the road to the parking area.
- The approach to the front door from here is via the front gate. The front gate is 1030mm wide. There is a 130mm step down onto the garden path at the gate. The garden path is of level stone slabs and is 880 mm to 950mm wide.
- The key safe is outside the front door at height of 1500mm to the keypad.
- The approach to the back door is down two steps onto the lawn and then onto a basic footpath to the back door. There is no railing to hold on to whilst using the steps. It is recommended that the approach to the front door is used to access the cottage.

Getting in (and out) of the cottage

Front entrance:



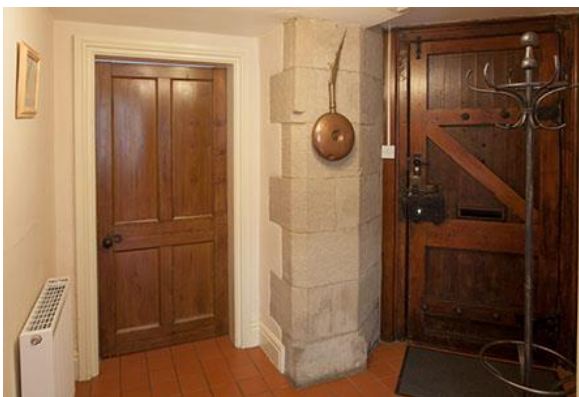
Back entrance:



- There is a 100-120mm high stone step into the porch outside the front door followed by a 170mm high step up into the cottage. There is a wooden threshold at the front door which is 55mm high externally and 30mm high internally. The front door has a clear opening width of 830mm.
- There is a 270mm high step outside the back door into the back-porch area and a low wooden threshold at the door itself. The door has a clear opening width of 800mm.
- The porch area at the back door is 950mm wide and contains a metal ash bin that reduces the width of the porch to 740mm. This bin can be removed prior to arrival if required. There is a small wooden shelf, left side of the back porch at a height of 1.57m. There is an additional key safe in the back door at a height of 1.33m.

Getting around the cottage

Ground Floor



- The cottage is on one level inside. Internal door widths range from 620mm – 800mm. Quarry tile flooring in the kitchen and entrance hall, vinyl flooring in the shower room and fitted carpets in the bedrooms and sitting/dining room. The corridor leading to the double bedroom and the shower room is 820mm wide.

- The Entrance is a spacious hallway with doors off to the sitting/dining room, twin bedroom and kitchen, and corridor leading to double bedroom and shower room.

Sitting Room



- 770mm wide door.
- 1 x 2-seater sofa with seat height of 450mm.
- 2 x wingback armchairs with seat height of 450mm.
- Wooden dining table and chairs. Chairs 470mm high and table 740mm high with 685mm high knee clearance underneath.
- Multi-fuel stove, TV with Freesat, DVD player, CD player with radio.
- There is no Wifi. There is limited mobile phone signal.
- Central light and two reading lamps.
-

Kitchen



- This is just within the back door. The internal door into the kitchen is 750mm wide.
- The kitchen equipment includes a gas cooker, fridge with freezer compartment, microwave, washing machine and dishwasher.
- There is good circulation space in the kitchen.
- The worktops are 920mm high.
-

Bedroom

Double Bed room:

- Door is 730mm wide.
- Double bed 1460mm wide x 2000mm long x 560mm high.
- 40mm clearance under bed.
- Reading lamp either side of the bed, on bedside cabinets.
- Wardrobe, dressing table with stool and armchair, care takers large wooden storage chest under window, portable heated towel rail, portable heater.
- View over garden.



Twin Room:

- Door to bedroom is 800mm wide.
- Twin beds 900mm (3') wide x 1900mm (6'3") long x 520mm (1'8") high.
- 260mm (10") clearance under beds.
- Bedside light and ceiling light.
- Chest of drawers, wardrobe, portable heated towel rail, portable heater.
- Bedside cabinet.





Shower room

- Shower room doorway is 620mm wide and opens out into the corridor.
- Shower room comprises lavatory, basin and step-in shower.
- The WC is 400mm high.
- The basin is 785mm high and has lever taps.
- The shower is a corner shower with 230mm high step into the shower area.



Garden



- Garden surrounds the cottage and is mainly laid to lawn with a number of shrubs and plants on the borders.
- Sounds of the River Hebden which runs through the valley.
- Views over the valley to woodland.
- There is a garden bench in the back garden. Table and chairs for the garden are stored in the guests shed next to parking area.

Additional Information

Facilities at all cottages

The National Trust aims to expand the list of accessible /equipment/items available at each cottage and these may include

- Cordless kettle
- Hollowfibre bedding
- Chair with armrests
- Good reading light
- Large handle vegetable peeler
- Easy tin opener
- Non-slip mat for bath/shower
- Non-slip place mat
- Easy jar opener
- Information in alternative formats (on request)

Please note that we cannot guarantee that all items will be available at the time of your visit. Please enquire at the time of booking regarding any particular requests.

Specialist equipment

Other specialist equipment such as wheelchairs, bath seats, toilet frames etc may be available for loan or purchase from the local Red Cross loan centre. Please check this out before booking the Cottage and contact us if you require further information.

<http://www.redcross.org.uk/standard.asp?id=89425>

Future Plans to improve Access to National Trust Holiday Accommodation

- We are currently in the process of writing accessibility guides for all our holiday cottages and bunkhouses and improving access over time for all our guests. All feedback is very helpful in informing us of ways in which we can improve access. We welcome any comments or ideas from you about access at this cottage and thank you for taking the time to do this. Please do this in the most convenient way for you. See contact details below or information on website.

About the Accessibility Guide

- This Accessibility Guide is intended to provide key information about the accommodation that may be particularly relevant to guests with disabilities. Please contact us prior to booking if you would like information that is more specific and we will be happy to oblige.

Email: cottages@nationaltrust.org.uk

Phone: 0344 8002070

Access for All at the National Trust

- The Access for All office works to improve access at all National Trust accommodation and properties. The office welcomes comments and ideas on improving access.

Phone: 01793 818531

Email: accessforall@nationaltrust.org.uk

Date 01/10/2019