

Lytes Cary Manor- West Wing 003027

Accessibility Guide

Category 3

Introduction



- Sleeps 14 plus cot
- Parking available in the visitors car park a short distance from the house.
- Wing of a medieval stone manor house with gardens on fairly level ground
- Quiet location
- Night storage heating with some oil fired central heating

- Free access to the manor, gardens and parkland
- Good walking routes available around the estate

The Cottage is arranged as follows:

Ground Floor:

- Entrance Hall, kitchen, large dining room, twin bed-room with an en-suite shower.
- Gallery and formal sitting room with wood burning stove.
- There is a small informal sitting area also on this level.

First Floor

- Main staircase to the first floor, long gallery, 4 bedrooms, (3 doubles with 5' beds and one twin)
- 2 bathrooms (one with roll top bath and separate shower and one with shower over bath).
- A set of 4 timber steps lead down from the long gallery to a small sitting area within a window bay.

Second Floor

Staircase to 2 bed-rooms (1 double with 5' bed and one twin) and a bathroom

Pre-Arrival Information

- See the main webpage for booking and location details.

- Please contact us prior to booking if you have any specific access requirements or queries regarding this accessibility guide.
- Directions to Lytes Cary will be provided with your booking

Approach

- Easy to find. Directions to the property are good.
- Generally level terrain locally.

Arrival & Parking Facilities

- Parking is available for two cars to the side of the house access by the back lane which is found through the main visitor car park – please follow the signage, additional parking is available in the visitors car park a short distance from the house.
- No drop-off point that is any nearer to the main entrance, which is approximately 10m from the car park over level ground.
- Bulkhead lighting (PIR) in the area around the courtyard.
- Surfaces are of loose gravel and medium gauge stone leading to a paved pathway to the front entrance. Path width is 1220mm leading from the arch which is 940mm wide.
- The Key safe is located in the adjacent storage area and is fitted at 1380mm from floor level. The code is in the booking details. The width of the door into the laundry room store opening is 1000mm and the area is well lit.
- It is clear where to go.

Getting in (and out) of the property

- The main entrance is step-free but has a very small threshold of 35mm. The doorway is 1230mm wide.
- This door leads into a long timber floored entrance hall with coir mat where outdoor games equipment is stored. The inner lobby door width is 1090mm which opens onto the formal Hall, main staircase and downstairs rooms.
- Externally there is a step of 130mm down to the garden.

Getting around the cottage

Ground floor:

There are no inter-room thresholds or steps except into the large kitchen where there is a step of 200mm. This is a property on a grand scale with sofas, occasional tables and comfortable arm chairs found in window alcoves, niches, the long gallery and other areas. All corridors exceed 1.2m on ground floor levels.

Doorways tend to be wide and some doors may be a little heavy (some exceed 30newtons). Flooring is generally of timber covered with large rugs. Some bedrooms are carpeted. Wet areas are of vinyl, tiled or flag stones.

Due to the extensive use of dark wood paneling illumination levels can be a little low in some areas particularly on the ground floor (50lux average). A range of artificial lighting is provided in each room.

Wide formal doors lead into the very large dining room and sitting rooms. Large windows offer good illumination levels to most key spaces.



The main staircase is of timber with wide banisters to one side and a white 'pig's ear' style dado rail to the other.

The main stairs rise in 3 stages with landings of 1200 x1260mm in between

- 1480mm wide with 2 lower steps of 180mm and 170mm.
- 8 steps to landing.
- 6 risers of 180mm height to landing.
- 8 risers of 180mm lead to the final landing

First Floor

There are wide timber corridors and door clear widths vary between 725mm and 900mm wide. Step to one double bedroom of 180mm.

Second Floor



- A separate timber stair case with a width of 870mm and 15 risers lead up from the first floor to the second floor bedrooms with a fan turn.
- Stairs to the second floor has a banister to one side.
- Some low ceilings and beams on the top floor.

Kitchen- see also photos on the National Trust Holidays website



- Large oblong kitchen with breakfast table and chairs. Flooring of ceramic tiles. Step into the room
 - Rangemaster and standard oven and hob.
 - Height of the worktop is 900mm from floor level
 - Cabinet fridge freezer
 - Dishwasher
 - Washing machine and dryer
 - Lighting levels are good
 - Lever mixer taps provided on sinks
- Equipped for large groups
 - Breakfast table is 770mm high. Length 2570mm and 1180 wide

Formal Sitting Room

- Large doors (x2) with a width of 940mm. Very large and spacious room with good circulation.

- Timber flooring boards covered in part with large rugs.
- Wide range of sofas (3 and 2 seater), armchairs (3), upholstered stools and settles. Some with arms. Heights of arm chairs vary between 380mm and 500mm.
- A range of full height mullioned windows with stone casements looking over the gardens and parkland.
- Live fire, guard provided
- 2 sets of large wooden doors at 940mm clear width.
- Central chandelier, wall lights and table/standard lights. Most have low energy bulbs.

Formal Dining Room

- **Oak Paneled room** - Very large dining table to seat 16. Table height 740mm. Space under of 690mm and of good design for use by wheelchair users.
- Dining chair height 490mm. Table height 740mm.
- Range of wall mounted and table top lamps.
- Large windows overlooking the gardens.
- 2 sets of wooden doors into the room.
- Flag stone floor
- Illumination levels are fair – range of wall, central and table lamps provided



Bathing/Showering facilities

Shower room 1 Ground Floor (en-suite with twin bedroom)



- **Room dimensions 2200mm x 2480mm. Shower room**
- Door width is 800mm into the area
- Clear door width of curved shower cubicle is 690mm. Tray size is 1150mm x 670mm. 250mm plinth into the shower
- 1280mm to centre of shower unit from the tray base.
- Mains Controls are easy to see and to use. Room for shower seat if required (not provided). Non-slip mat is provided.
- Circulation is good. Illumination levels low.
- Close coupled WC at 435mm to seat, basin at 845mm to rim. Eco-flush.
- Heated towel rail

Bathroom on First Floor

- Large room. Door has a clear width of 760mm. Vinyl flooring.
- WC 440mm to seat. Lever flush.
- Bath with shower over the bath with curtain.
- Sink height 800mm with mixer taps. Light over the mirror.

Bathroom and shower cubicle on First Floor

- Door width 770mm
- Roll top bath at 580mm with mixer shower.
- Width 600mm and length 1470mm and internal height of 420mm.
- WC height 440mm. Eco flush.
- Sink height of 800mm - pillar taps
- Light over the mirror

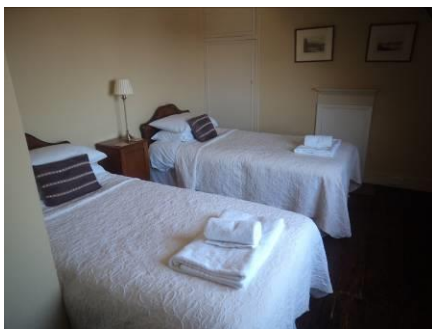
Shower cubicle

- 1150mm x 750mm - curved corner
- Clear door width of 680mm
- Plinth to shower tray 130mm high

Bathroom on the Second Floor

- Bright and airy room. Door width 770mm. Vinyl floor.
- Bath at 550mm height from floor. Length 1500mm and inner depth of 370mm and width of 770mm.

Twin Bedroom - with en suite shower room on the ground floor (see shower room above)



Door width 800mm

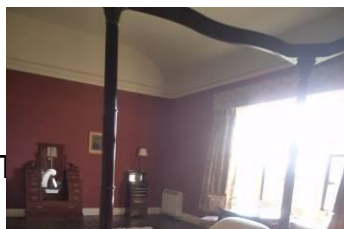
- Flagstone floor with rugs.
- 'box beds' 900mm wide, 2000mm long and 620mm high. Set to each wall.
- Space of 820mm between the beds
- Space of 280mm under the bed frame.

Double Bedroom First floor

- Brass bedstead. 1500mm wide and 1900mm long.
- Bedside lights to each side of the bed. 650mm height. 2 upholstered chairs.

Double Bedroom First Floor

- Very large room with garden views. Door width 800mm.
- 'Tester' bed (no curtains) 1500mm wide and 1980mm long. Height 580mm.



A range of bed-room upholstered chairs and tables. Wall lights, standard lamp and table lamps.

Double Bedroom First Floor

- Bed is 1400mm wide, 1990mm long and 500mm high. Timber frame with space under
- Circulation is moderate. 600mm clear space to R side and 800mm to L side
- Bed-side tables and lamps (low energy bulbs)
- Illumination levels good.

Twin Bedrooms First Floor

- Door width 830mm
- 1m wide metal frame beds. Length 1900mm and height of 500mm. Space of 170mm under the frame.
- Clear space of 900mm between the beds. One set against the wall the other a little way from the wall.
- 2 bedroom chairs with a height of 450mm

Double Bedroom Second Floor

Door width 810mm. Bed Width 1560mm, length 2040mm and height 550mm.
Bedroom chairs, bedside table lamps.

Twin Bedroom Second Floor

- Door width 780mm.
- Bed widths 900mm. Divan beds with length of 1900mm. Height 600mm.
- Clear width between beds is 760mm
- Some low beams, lowest height at 1.6m from floor level

Additional Information

- Assistance dogs are welcome at all our cottages
- In the event of a fire, it is the responsibility of the guests to evacuate themselves. Vibrating fire/smoke detectors are available if requested at time of booking. Please contact us if you have any other specific access requirements in this respect.

Facilities at all cottages

The National Trust aims to expand the list of accessible /equipment/items available at each cottage and these may include

- Cordless kettle
- Hollow fibre bedding
- Chair with armrests
- Large handle vegetable peeler
- Easy tin opener

- Non-slip mat for bath/shower
- Non-slip place mat
- Easy jar opener
- Information in alternative formats (on request)

Please note that we cannot guarantee that all items will be available at the time of your visit. Please enquire at the time of booking regarding any particular requests.

Specialist equipment

Other specialist equipment such as wheelchairs, bath seats, toilet frames etc may be available for loan or purchase from the local Red Cross loan centre. Please check this out before booking the Cottage and contact us if you require further information.

<http://www.redcross.org.uk/standard.asp?id=89425>

Future Plans to improve Accessibility to National Trust Holiday Cottages

We are currently in the process of writing accessibility guides for all our holiday cottages and improving access over time for all our guests. All feedback is very helpful in informing us of ways in which we can improve access to all our cottages. We welcome any comments or ideas from you about access at this cottage and thank you for taking the time to do this. Please do this in the most convenient way for you. See contact details below or information on website.

About the Accessibility Guide

This Accessibility Guide is intended to provide key information about the cottage that may be particularly relevant to guests with disabilities. It is reviewed annually. Please contact us prior to booking if you would like more detailed information and we will be happy to oblige.

Phone: 0344 800 2070

Email: cottages@nationaltrust.org.uk

Access for All at the National Trust

We continue to work to improve accessibility at all our holiday cottages. We welcome comments and ideas on improving access.

Phone: 0344 800 2070

Email: cottages@nationaltrust.org.uk

[April 2014](#)

