

National Trust Cottages Accessibility Guide

Malt House
Cotehele
Cornwall



Property Ref: 011112

Introduction

The property is located on the Cotehele estate adjacent to the Quay where open tidal water can be deep.

A spacious property that sleeps up to 6 people in 3 bedrooms. Bathroom, plus an en-suite shower room in the main bedroom

The property has oil fired central heating and two solid fuel burners

The Cottage is arranged as follows:

Ground floor

Large sitting room with multi-fuel stove, open plan kitchen/dining room, porch/utility for bike/kayak storage.

First floor

Three bedrooms (one 6' double with ensuite shower and WC, one 6' double which can be a twin on request, one twin). Family bathroom with separate shower and bath. Tower room accessed from landing.

Pre-Arrival

- See the main webpage for booking and location details.
- Please contact us prior to booking if you have any specific access requirements.
- Directions provided with booking

Approach

The property is approached via winding country lanes with established hedgerows and banks each side of the lane. Stretches of lane are single track with passing places. Nearer to the property, lanes converge at Cotehele Quay and there may be pedestrians/visitors on foot in the lane.

Arrival & Parking Facilities

- Parking for one car is to the side of the property at the end of a tarmacked drive
- Additional parking is available at the quay car park
- The property is then accessed on foot under a low archway over paving
- There is outside lighting by the front door but if arriving after dark it is advisable to have a torch



Getting in (and out) of the cottage

Front door width 870mm, latch door handle
Slate steps up to front door, heights 140mm & 120mm, treads 550mm & 530mm
Step down into hallway of 50mm onto rubber mat
Key box with dial combination lock to the left of the front door, height 1480mm



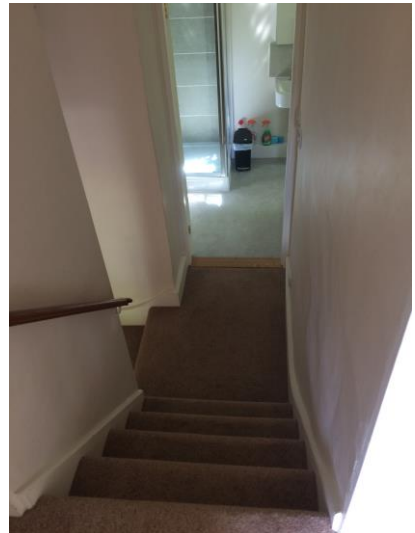
Getting around the cottage

Ground floor:

- Initial hall width 1370mm widening to 1760mm, length 2600mm
- Wood effect linoleum floor, rubber doormat
- Good circulation throughout, step up to sitting room

First floor:

- Initial straight stairs (7 steps) with a step height of 210mm, tread 240mm, width 660mm
- Landing area 880mm by 880mm, two handrails, left and right.
- Stairs divide in two, quarter turn off the landing (90 degrees) to the left and right
- Left stairs (5 steps) step height 210mm, tread 240mm, width 810mm, leading to a further landing area 770mm by 820mm then a further quarter turn (90 degrees) step up, height 210mm, width 820mm leading onto the main landing
- Right stairs, quarter turn (90 degrees) and one step up height 210mm, width 880mm leading to split level landing area 870mm by 850mm. Bathroom is off this landing. Quarter turn (90 degrees) Straights stairs up (5 steps), stair height 210mm, tread 240mm, width 760mm, handrail to the right.
- 1 x pair of wall lights, window overlooking back of the property and a vegetation covered bank
- Main landing minimum width 870mm, carpet, 2 pairs of wall lights, 1 single wall light, 1 window with views over the river. Wardrobe



Sitting room

- Door width 800mm, step up height 110mm, wood tread 145mm
- Linoleum wood effect floor, hearth rug
- Wood burner
- 2 x 2 seater settees, seat height 470mm
- 1 x winged back armchair, seat height 540mm
- 1 x armchair, seat height 470mm
- 2 x windows with views over the valley and river
- Window seats with cushioned seat pads, seat height 570mm
- 5 x pairs of wall lights, table lamp with on/off switch on the cable
- Spacious with good circulation



Kitchen/dining room

- Door width 760mm, wooden threshold, width of 160mm and slight step down of 30mm
- Wood effect linoleum floor
- Wood burner
- Table height 770mm, clearance underneath 620mm
- 6 x wooden dining chairs with rush seat pads, seat height 490mm
- 2 x windows with views over front and side garden
- 2 x pairs ceiling lights, 3 pairs of wall lights
- Height of kitchen worktop 930mm, breakfast bar 910mm
- Fitted kitchen with electric double oven and ceramic hob, fridge/freezer, dishwasher, microwave
- Sink, mixer tap, bar tap with ceramic washers
- Good circulation



Utility room

- Door width 690mm, wooden threshold, height 30mm, tread 90mm, step down 190mm
- Tiled floor
- Oil boiler
- Sink, twist tap with rubber washers
- Separate washing machine and tumble dryer
- Plastic clear roof
- Coat hooks, height 1730mm
- External door, width 660mm



Bathroom

- Door width 700mm, wooden threshold, width 125mm, step down 30mm
- Linoleum floor
- Toilet height 420mm, push flush in the wall at a height of 1230mm
- Bath height 550mm, twist taps with rubber washers
- Sink height 810mm, twist taps with ceramic washers
- Shaver socket height 880mm
- Shower, step up 220mm, sliding door, opening width 430mm, controls height 940mm
- Sunken spot lights in the ceiling, windows with views of stone bank and vegetation
- Circulation between the bath and the toilet 1060mm, sink to the toilet 630mm



Double bedroom

- Door width, 740mm, level wooden threshold
- Carpet
- Double bed width 1800mm, length 2000mm, height 600mm, space underneath 220mm
- 2 x side tables, bedside lamps with under lampshade on/off switches
- 4 x pairs of wall lights
- 3 x windows with views over the quay, woodland and vegetation covered bank
- Chair with a seat height 490mm
- Wardrobe, dressing table height 720mm, clearance underneath 570mm, stool height 460mm
- Spacious with good circulation



En-suite shower room

- Door width 760mm, level wooden threshold
- Linoleum floor
- Toilet, sink and electric corner shower
- Toilet height 420mm, push button flush
- Corner shower 700mm by 700mm, step up 220mm, controls 1000mm, detachable shower head
- Sink height 820mm, twist taps with ceramic washers
- Shaver socket height 1860mm
- No window. Ceiling and mirror light



Twin bedroom

- Door width 760mm, level wooden threshold
- Carpet
- Twin divan beds width 900mm, length 1900mm, height 630mm
- Window with views over the quay and river
- Hook on back of the door height 1720mm
- 2 x pairs of wall lights
- Circulation space between the beds 1500mm

Twin/double bedroom

- Door width 760mm level wooden threshold
- Carpet
- Twin divan zip and link beds, combined width 1800mm length 1900mm height 600mm
- 2 x bedside tables, bedside lamps with under lampshade on/off switches
- 3 x pairs of wall lights
- 2 x window with views over the quay
- Chest of drawers, (wardrobe on the landing)
- Chair, seat height 470mm

- Spacious with good circulation



Tower room

- Door width 790mm
- 3 x steps down step heights 135mm, tread 310mm, banister on the right
- Carpet
- Desk height 750mm, clearance underneath 730mm. Chair, seat height 480mm
- 3 x windows with views over the quay, pendant light
- Spacious with good circulation



Garden

- Access to the garden is via front door or from the utility
- Unenclosed paved seating area to the front of the property with wooden table and chairs
- Separate grassed garden area opposite the property on the other side of the lane. Through a gate and adjacent to the river



Additional Information

- Assistance dogs are welcome at all our cottages
- In the event of a fire, it is the responsibility of the guests to evacuate themselves. Vibrating fire/smoke detectors are available if requested at time of booking. Please contact us if you have any other specific access requirements in this respect.

Facilities at all cottages

The National Trust aims to expand the list of accessible /equipment/items available at each cottage and these may include

- Cordless kettle
- Hollowfibre bedding
- Chair with armrests
- Good reading light
- Large handle vegetable peeler
- Easy tin opener
- Non-slip mat for bath/shower
- Non-slip place mat
- Easy jar opener
- Information in alternative formats (on request)

Please note that we cannot guarantee that all items will be available at the time of your visit. Please enquire at the time of booking regarding any particular requests.



Specialist equipment

Other specialist equipment such as wheelchairs, bath seats, toilet frames etc may be available for loan or purchase from the local Red Cross loan centre. Please check this out before booking the Cottage and contact us if you require further information.

<http://www.redcross.org.uk/standard.asp?id=89425>

Future Plans to improve Accessibility to National Trust Holiday Cottages

We are currently in the process of writing accessibility guides for all our holiday cottages and improving access over time for all our guests. All feedback is very helpful in informing us of ways in which we can improve access to all our cottages. We welcome any comments or ideas from you about access at this cottage and thank you for taking the time to do this. Please do this in the most convenient way for you. See contact details below or information on website.

About the Accessibility Guide

This Accessibility Guide is intended to provide key information about the cottage that may be particularly relevant to guests with disabilities. It is reviewed annually. Please contact us prior to booking if you would like more detailed information and we will be happy to oblige.

Phone: 0344 800 2070

Email: cottages@nationaltrust.org.uk

Access for All at the National Trust

We continue to work to improve accessibility at all our holiday cottages. We welcome comments and ideas on improving access.

Phone: 0344 800 2070

Email: cottages@nationaltrust.org.uk

Date 16 August 2018