

National Trust Cottages Accessibility Guide

Cottage Detail: East End Apartment 2 - Norfolk
Cottage Ref: 010009
Category:



Introduction

This warm and welcoming apartment is on the ground floor overlooking the mill pool and has exposed wooden beams within the open plan arrangement which gives great character. It is an ideal and comfortable base for walkers, birdwatchers. Norfolk coast and walks direct from the apartment. An undisturbed landscape of creeks and vast sands, sailing boats and geese flying in the sunset makes this a location timelessly preserved.

- Shared garden
- Wood-Burning stove

The Cottage is arranged as follows:

Ground Floor: open-plan kitchen/dining/sitting area with multi-fuel stove, shower room and two bedrooms (1 double and 1 twin)

Pre-Arrival

- See the main webpage for booking and location details.
- Please contact us prior to booking if you have any specific access requirements.
- Directions provided with booking

Approach

- The cottage is easy to locate and the directions given from the Contact Centre are good.
- The Mill is located near to the mill-stream.

Arrival & Parking Facilities



- Hard and fairly level surfaces with some stone aggregate dressing to the car-park area. The cottage entry point about 20-25m.
- Surfaces can be subject to weather conditions
- This area is not lit. Those arriving by night may require a torch.
- Drop off for luggage and passengers, is possible by the entry point.
- The dedicated parking area is away from the main road
- The area is shared with other Apartments

Getting in (and out) of the cottage

- Level access directly into the Cottage. Door at 870mm wide (Half glazed)

Getting around the cottage

Ground floor:

- Circulation is good apart from the twin bed-room.
- Door widths are all over 750mm
- No thresholds or internal steps

Kitchen/Diner/sitting room



- Available space in kitchen between units is 1170mm.
- Cordless kettle
- Microwave
- Single fridge with freezer compartment
- Dishwasher (Tricity Bendix)
- Cabinet mounted solid plate oven and hob
- Height of worktop is 940mm
- Vinyl in kitchen, otherwise carpet throughout

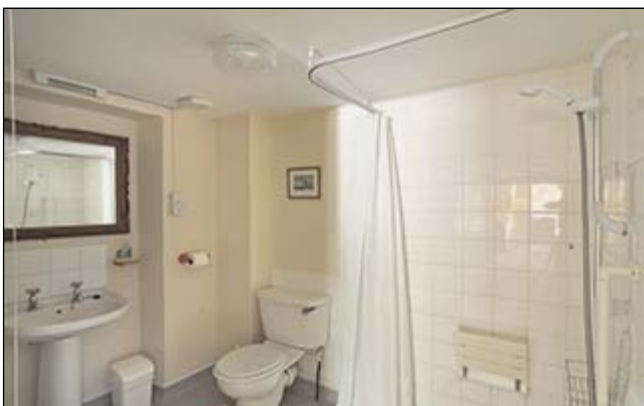


- Open plan living space
- Good circulation in sitting and dining areas
- Furniture can be adjusted to suit guest's needs
- Dining table sits 4-6 people 770mm to table-top and 640mm to under-table fascia
- Close weave carpet
- 2-3 seat settee
- Rug on carpet (Can be removed on request)
- Wood burning stove



- Good levels of illumination
- Beams are above 2.1m
- Circulation space good
- Very large room with alcove

Ground floor Shower-room (Large)



- Straight approach – Door width 870mm - clear width. Hand-rail to door.
 - Good levels of illumination
 - Coved vinyl sheet flooring – slip resistant
 - Electric thermostatic (Triton 100E) shower unit
 - Extra long riser bar and long hose
 - Wall mounted shower seat at 450mm
 - Sink height at 800mm
 - Free standing Toilet frame 650mm to top of arms if required
- The close coupled WC is at 460mm high to seat.

Twin Bedroom



- Wooden bed-frames (space under)
- Height of 700mm and 720mm. Length 2.1m
- 3 double sockets
- Good illumination levels
- Wardrobe space

Double Bedroom



- Metal bed frame at 700mm. Space under
- Good circulation to one side
- Door opens inwards
- Door width 880mm
- Bed-side lights (Low energy units)
- Good levels of illumination

Garden

- Shared garden beside the mill-stream

Additional Information

- Assistance dogs are welcome at all our cottages
- In the event of a fire, it is the responsibility of the guests to evacuate themselves. Vibrating fire/smoke detectors are available if requested at time of booking. Please contact us if you have any other specific access requirements in this respect.

Facilities at all cottages

The National Trust aims to expand the list of accessible /equipment/items available at each cottage and these may include

- Cordless kettle
- Hollowfibre bedding
- Chair with armrests



- Good reading light
- Large handle vegetable peeler
- Easy tin opener
- Non-slip mat for bath/shower
- Non-slip place mat
- Easy jar opener
- Information in alternative formats (on request)

Please note that we cannot guarantee that all items will be available at the time of your visit it may be helpful to speak to the NT Contact Centre if you have any other specific access requirements in this respect.

Specialist equipment

Other specialist equipment such as wheelchairs, bath seats, toilet frames etc may be available for loan or purchase from the local Red Cross loan centre. Please check this out before booking the Cottage and contact us if you require further information.

<http://www.redcross.org.uk/standard.asp?id=89425>

Future Plans to improve Access to National Trust Holiday Accommodation

- We are currently in the process of writing accessibility guides for all our holiday cottages and bunkhouses and improving access over time for all our guests. All feedback is very helpful in informing us of ways in which we can improve access. We welcome any comments or ideas from you about access at this cottage and thank you for taking the time to do this. Please do this in the most convenient way for you. See contact details below or information on website.

About the Accessibility Guide

- This Accessibility Guide is intended to provide key information about the accommodation that may be particularly relevant to guests with disabilities. Please contact us prior to booking if you would like information that is more specific and we will be happy to oblige.

Email: cottages@nationaltrust.org.uk

Phone: 0344 8002070

Access for All at the National Trust

- The Access for All office works to improve access at all National Trust accommodation and properties. The office welcomes comments and ideas on improving access.

Phone: 01793 818531

Email: accessforall@nationaltrust.org.uk

Updated: October 2019