

Cottage Ref: 011096

The Stables

Penrose Hill
HELFORD
Cornwall

**Introduction**

- The Stables is a large apartment conversion on the first floor of the old stable block for the Penrose estate. There are far reaching rural views over the Loe pool to the front. Part of the ground floor of the stable block is used as a small, day time, estate office by the NT.
- The Cottage is arranged as follows:

First Floor:

- Entrance hall, Kitchen/ Lounge/Dining room, Bathroom. Double, Twin and Single Bedrooms.

Pre-Arrival

- See the main webpage for booking and location details.
- Please contact us prior to booking if you have any specific access requirements.
- Directions provided with booking

Arrival & Parking Facilities



- The cottage is on the Penrose estate which is off the B3304 Helston to Porthleven road. It is located a short distance down the main drive. The parking area is the hard standing which is immediately after passing the rear of the Stables on the left-hand side. There is a compacted granite chipping, zigzag, pathway from the car park down through the garden to the entrance door. There is a push on light switch beside the start of the pathway which operates the low level lamps illuminating the complete pathway down to the cottage – this switch is 2-way with another switch just inside the cottage.

Getting in (and out) of the cottage



- The pathway (1,500mm wide approximately) through the garden ends at a bridge across to the door. The bridge has metal guardrails which are 980mm high. The combination safe containing the entrance door key is on the front wall of the cottage, to the right of the door. It is recommended to bring a torch to set the correct lock combination on arrival. Key to be returned to safe on final departure. The part glazed door opens inwards.

Getting around the cottage

First floor:

- Part glazed front door opens into hall which has within, four solid wooden doors.
- One door opens into Single Bedroom, one into Bathroom, one into Kitchen/Dining room/Lounge and one to the Inner Hall.
- Within the Inner Hall are two solid wooden doors, one into Twin Bedroom and the other into the Double bedroom. There is a further door off the Inner Hall which opens onto an Emergency staircase down to the ground floor.

Hall.



- 780mm wide main entrance doorway from front of cottage.
- Fitted carpet flooring.
- Two ceiling lights on 2-way switch. One has built in emergency lamp.
- One central heating radiator. One convector heater. Central heating control unit.
- Bureau/Chest of 4 drawers (600mm W x 400mm D x 1,040mm H).
- Wall mounted coat racks with 20 hooks.
- Solid wooden doors off to bathroom, single bedroom, kitchen complex and inner hallway.

Inner Hallway – Single aspect.



- 800mm wide solid wooden door opens outwards from entrance hall.
- Fitted carpet flooring.
- Two ceiling lights on 2-way switch. One has built in emergency lamp.
- One central heating radiator.
- Window, with deep sill/seat (360mm seat H), to rear aspect (1,500mm W x 1,300mm H).
- Window, with deep sill/seat (360mm seat H), to rear aspect (700mm W x 1,300mm H)
- Two solid wooden doors off to, twin bedroom and double bedroom.
- Fire door into emergency staircase down to ground floor.

Twin Bedroom – Single aspect.





- 720mm wide doorway inwards from inner hallway.
- Low ceiling beam in room (1,900mm H).
- Fitted carpet flooring.
- Ceiling light. Pair of table lamps.
- One central heating radiator. One convector heater.
- Sash window, with deep sill/seat (350mm seat H), to front aspect (600mm W x 1,300mm H).
- Round bedside table (360mm Dia x 540mm H).
- Freestanding wardrobe (900mm W x 600mm D x 1,670mm H).
- One wooden chair (440mm seat H).
- Pair of single beds (each 1,000mm W x 2,000mm L x 600mm H).

Double Bedroom – Single aspect.





- 750mm wide doorway inwards from inner hallway.
- Low central ceiling beam in room (1,900mm H).
- Fitted carpet flooring.
- Ceiling light. One of table lamp.
- One central heating radiator. One convector heater.
- Sash window, with deep sill/seat (320mm seat H), to front aspect (700mm W x 1,300mm H).
- Pine table (920mm W x 500mm D x 750mm H).
- Freestanding wardrobe (1,300mm W x 540mm D x 1,950mm H).
- One wooden armchair (420mm seat H).
- Bedside cabinet (360mm W x 360mm D x 760mm H).
- Double bed (1,500mm W x 2,000mm L x 600mm H).

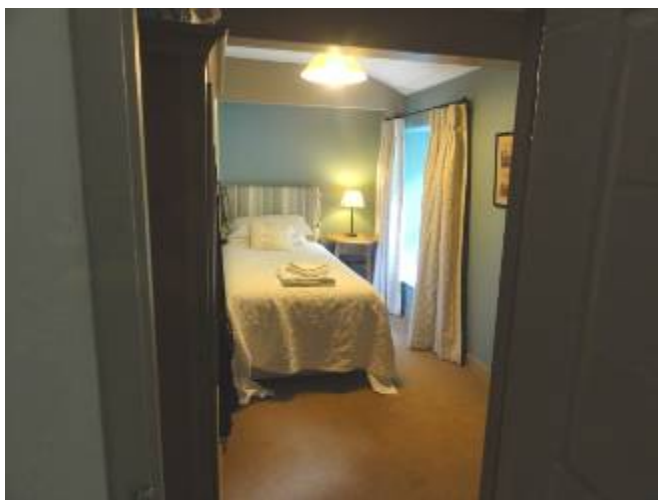
Bathroom – Single aspect.



- 780mm wide doorway opens outwards into entrance hall.
- Textured non-slip flooring.
- One central heating radiator.
- Electric towel rail.
- Two ceiling lights. Light above mirror.
- Sash window, with deep sill/seat (390mm seat H), to front aspect (700mm W x 1,200mm H).

- Walk-in shower cubicle (1,100mm W x 700mm D). With folding safety glass side panels. Shower runs off central heating.
- Bath stool with adjustable feet for height.
- W.C. (450mm seat H). Fixed vertical grab rail and “drop-down” assistance rail.
- Wash basin (780mm H). Fixed vertical grab rails, one each side of mirror over basin.
- Bath (690mm W x 1,680mm L x 520mm H). Horizontal grab rail on side. Mixer taps with shower head for hair washing etc.

Single Bedroom – Single aspect.



- 640mm wide doorway opens outwards into entrance hall.
- Fitted carpet flooring.
- One central heating radiator. One convector heater.
- Sash window, with deep sill/seat (380mm seat H), to front aspect (600mm W x 1,300mm H).
- Window, with deep sill, to front aspect (300mm W x 650mm H).
- Round bedside table (600mm Dia x 720mm H).
- Wooden chair (440mm seat H).
- Freestanding wardrobe (1,060mm W x 550mm D x 1,720mm H).
- Single bed (1,000mm W x 2,000mm L x 600mm H).

Kitchen/Lounge/Dining room – Dual aspect.



Lounge/Dining Area.

- 740mm wide doorway opens inwards from hall.
- Low ceiling beam in room (1,870mm H).
- Fitted carpet flooring.
- Two central heating radiators. Electric mock Log burner.
- Two ceiling lights on 2-way switch. One table lamp. One standard lamp.
- Emergency re-chargeable torch.
- Pair of sash windows, with deep sill/seat (380mm seat H) to side aspect (each 600mm W x 1,300mm H).
- Sash window with deep sill/seat (440mm seat H) to rear aspect (1,500mm W x 1,200mm H).
- Pine dining table (1,350mm W x 790mm L x 600mm knee H).
- Six wooden “chapel” chairs (460mm seat H).
- Pine cabinet (840mm W X 580mm D x 1,040mm H).
- Two, Two-seater settees (440mm seat H). Easy chair (420mm seat H).
- Chest of 2, deep, drawers (740mm W x 570mm D x 880mm H).
- T.V., VCR/DVD player. Micro Radio/Tape/CD player.

Kitchen Area.



- Open walkway, from lounge area, between floor cupboards (1,100mm W).
- Textured non-slip flooring.
- Six adjustable spot-lights. Cupboard strip light. Extractor hood/Light over hob.
- Built-in electric oven (900mm H). Built-in ceramic hob (760mm H with chair access below)
- Kitchen floor cupboards with drawers under 900mm High worktops.
- Wall cupboards 410mm above worktop.
- Stainless sink/drainer (900mm H with chair access below).
- Washer /Dryer machine, Fridge, Freezer, Dish washer, Microwave oven, Toaster and kettle.

Garden



- The garden is rockery style bordering the zigzag pathway down to the small decking area. Near the bottom of the path are a couple of steps up to a tiny lawn with a rotary dryer on it. There is a picnic table on the decking area.

Additional Information

- Assistance dogs are welcome at all our cottages
- In the event of a fire, it is the responsibility of the guests to evacuate themselves. Vibrating fire/smoke detectors are available if requested at time of booking. Please contact us if you have any other specific access requirements in this respect.

Facilities at all cottages

In addition to the standard equipment and facilities, each cottage is equipped with the following:

- Cordless kettle
- Chair with armrests in dining room and living room.



- Good reading light
- Large handle vegetable peeler
- Easy tin opener
- Non-slip mat for bath/shower
- Non-slip place mat
- Easy jar opener
- Information in alternative formats (on request)

We aim to provide these items in all cottages but please check when booking as to their availability and to check if new items have been added to the list.

Specialist equipment

Other specialist equipment such as wheelchairs, bath seats, toilet frames etc may be available for loan or purchase from the local Red Cross loan centre. Please check this out before booking the Cottage and contact us if you require further information.

<http://www.redcross.org.uk/standard.asp?id=89425>

Future Plans to improve Accessibility to National Trust Holiday Cottages

- We are currently in the process of writing accessibility guides for all our holiday cottages and improving access over time for all our guests. All feedback is very helpful in informing us of ways in which we can improve access to all our cottages. We welcome any comments or ideas from you about access at this cottage and thank you for taking the time to do this. Please do this in the most convenient way for you. See contact details below or information on website.

About the Accessibility Guide

- This Accessibility Guide is intended to provide key information about the cottage that may be particularly relevant to guests with disabilities. Please contact us prior to booking if you would like information that is more specific and we will be happy to oblige.

Email: cottages@nationaltrust.org.uk

Phone: 0344 8002070

Access for All at the National Trust

- The Access for All office works to improve access at all National Trust cottages and properties. The office welcomes comments and ideas on improving access.

Phone: 01793 818531

Email: accessforall@nationaltrust.org.uk

July 2011