

National Trust Cottages Accessibility Guide

Cottage name: Wood Farm

Address: Wood Farm, Sheringham Park, Upper Sheringham Norfolk NR26 8TB

Ref: 011020

Introduction



Wood Farm nestles on the edge of Sheringham Park's woodland, with the North Norfolk Heritage Coast nearby. The detached property can accommodate four people and three dogs. You have your own enclosed garden with lawn space for games and a seating area. Sheringham Park is a landscaped park with miles of footpaths and cycling trails that lead out to the cliff tops and coastal path.

Pre-Arrival

- See the main webpage for booking and location details
- Please contact the Contact Centre 0844 800 2070 prior to booking if you have any queries or specific access requirements
- Directions are provided with booking

Approach

Enter via Sheringham Park main gates and follow the signs for Wood Farm around the back of the buildings. The cottage is found on the left hand side.

Arrival & Parking Facilities



- There are two 5 bar gates entering into the garden area
- Parking is on the gravelled area

Getting in (and out) of the cottage



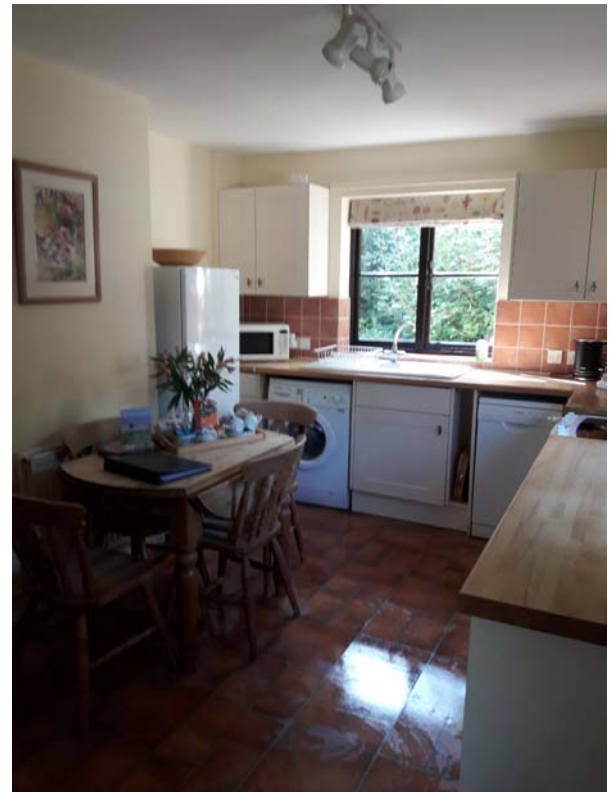
- Gravelled pathway to rear door of the cottage via a glazed entry lobby
- 100mm entry threshold step, 150mm depth and 25mm step down into lobby
- Entry doorway 820mm width
- Matting to floor
- Kitchen doorway 40mm threshold step with 40mm step down into kitchen

Getting around the cottage

Ground Floor

Diner/kitchen

- Entry to kitchen passing stairs to the first floor 900mm width
- Counter tops 930mm height
- Eyelevel cupboards 1400mm height
- Ceramic sink with mixer taps 970mm height
- Drop leaf dining table 760mm height
- 4 dining chairs 440mm height
- Bosch fridge freezer
- Bosch washing machine
- Freestanding electric double oven
- Halogen hob
- Bosch dishwasher
- Microwave, toaster and cordless kettle
- Storage cupboard under stairs
- Lino to floor
- Good levels of light with double aspect windows



Sitting Room

- Doorway to sitting room from kitchen 740mm wide
- Carpet tread to threshold
- Carpet to sitting room
- 2 seater and 3 seater sofas 450mm height
- Side table 440mm height with hifi unit

- Coffee table 460mm height
- Chest of drawers 800mm height with telephone available
- Fabric footstool 360mm height
- TV stand 600mm height with flat screen tv, remote and dvd player
- Open fire with fireguard
- Wood basket
- Cinder bucket
- Portable central heating controller
- 2 pendant ceiling lights and table lamp



Stairs to first floor



- Stairs to first floor from kitchen
- Carpet to stairs
- 900mm width of stairs
- 200mm height and 240mm depth of stairs
- Handrail to stairs 740mm height
- 11 stairs to small landing area 900mm x 900mm then right turn to
- 2 further stairs
- Main landing area 1200mm x 1100mm
- Doors leading to two bedrooms and bathroom

Bedroom 1

- Doorway 740mm width
- 2 single pine beds 1850mm length, 1000mm width and 600mm height
- 450mm space between beds
- 1 bedside table with lamp 670mm height

- Chest of drawers 840mm height
- Wardrobe
- Wooden chair
- Carpet to floor with carpet tread at threshold
- Pendant ceiling light



Master bedroom

- Doorway 740mm width
- Carpet to floor with carpet tread threshold
- White iron bed 1500mm width, 2000mm length and 540mm height
- 2 bedside cabinets and lamps 740mm height
- Wardrobe
- Towel stand
- Wooden chair
- Locked door to caretakers cupboard
- Pendant light to ceiling



Bathroom

- Door to bathroom 740mm width
- Carpet tread to threshold
- Lino to floor
- In built vanity unit/shelf 650mm space under shelf and 830mm to top of shelf
- Close coupled wc 400mm to seat
- Bath external height 540mm
- Interior of bath 1400mm length/ 560mm width and 360mm depth
- Lever taps to bath
- Glazed shower screen to bath
- Shower over bath 1500mm to controls
- Heated towel rail
- Airing cupboard with central heating/timer controls



- Wooden chair
- 1500mm to light pull cord
- 1350mm to shower pull cord
- Ceiling light

Garden



- Generous size garden with hedging to border
- Garden furniture available
- Storage shed

Additional Information

Facilities at all cottages

The National Trust aims to expand the list of accessible /equipment/items available at each cottage and these may include

- Cordless kettle
- Hollowfibre bedding

- Chair with armrests
- Good reading light
- Large handle vegetable peeler
- Easy tin opener
- Non-slip mat for bath/shower
- Non-slip place mat
- Easy jar opener
- Information in alternative formats (on request)

Please note that we cannot guarantee that all items will be available at the time of your visit. Please enquire at the time of booking regarding any particular requests.

Specialist equipment

Other specialist equipment such as wheelchairs, bath seats, toilet frames etc may be available for loan or purchase from the local Red Cross loan centre. Please check this out before booking the Cottage and contact us if you require further information.

<http://www.redcross.org.uk/standard.asp?id=89425>

Future Plans to improve Access to National Trust Holiday Accommodation

- We are currently in the process of writing accessibility guides for all our holiday cottages and bunkhouses and improving access over time for all our guests. All feedback is very helpful in informing us of ways in which we can improve access. We welcome any comments or ideas from you about access at this cottage and thank you for taking the time to do this. Please do this in the most convenient way for you. See contact details below or information on website.

About the Accessibility Guide

- This Accessibility Guide is intended to provide key information about the accommodation that may be particularly relevant to guests with disabilities. Please contact us prior to booking if you would like information that is more specific and we will be happy to oblige.

Email: cottages@nationaltrust.org.uk

Phone: 0344 8002070

Access for All at the National Trust

- The Access for All office works to improve access at all National Trust accommodation and properties. The office welcomes comments and ideas on improving access.

Phone: 01793 818531

Email: accessforall@nationaltrust.org.uk

Date September 2019

