

National Trust Cottages Accessibility Guide

Cottage Ref: 007018

Thatch Cottage
Calke Village
Ashby De La Zouche
Leicestershire
LE65 1RR



Introduction

- Thatch Cottage is a cottage sleeping 6 people located in Calke Village.
- The cottage has 2 double bedrooms and 1 twin bedroom, 1 shower room and 1 family bathroom with shower over bath.
- The cottage has oil-fired central heating and a multi-fuel stove in the sitting room.
- Calke park is within walking distance of the cottage.

The cottage is arranged as follows:

Ground floor:

- Kitchen, Dining Room, Entrance Hallway, Sitting room and downstairs WC.

First floor:

- 2 x double bedrooms, 1 x twin bedroom, 1 bathroom with shower over bath and 1 shower room.

Pre-Arrival

- See the main webpage for booking and location details.
- Please contact us prior to booking if you have any specific access requirements.
- Directions provided with booking
- Please bring torch if arriving in dark, as there are no streetlights here

Approach



- The Calke Abbey estate is well signed from the main approach roads. The cottage is approached on a tarmac road (see image opposite).
- There is a driveway with parking area immediately outside the cottage.

Arrival & Parking Facilities

- The parking area is within the driveway area to the cottage. There is parking for two cars.
- The surface of the parking area is firm. The brickwork pathway to the cottage can become slippery in wet weather and care should therefore be taken.

Getting in (and out) of the cottage

- The entrance door is 770mm wide and leads directly into the kitchen.
- The keysafe is located to the R/H side of the entrance door and is at 1170mm from floor level.
- There is a step down into the cottage – this is 70mm high.

Getting around the cottage

- The cottage occupies two floors. There is a change in level between the landing and the first double bedroom and the shower room and the shower room but with this exception, there are no other changes of level between the floors.
- There are fitted carpets throughout the cottage apart from in the kitchen, downstairs WC and the bathrooms where there is vinyl flooring.

HALLWAY



- Spacious carpeted area with coat hooks and external door with turn button for easy egress.
- Doors off to kitchen, sitting room, and downstairs WC.



Downstairs WC

- This is a separate lavatory.
- The WC seat is 400mm high
- The sink is 940mm high

Sitting Room

- Door from hallway is 740mm wide. This is a fire door and is fitted with a self-closer.
- Large room with multi-fuel stove, corner sofa and 2 seat sofa. Triple aspect windows with views over the garden on two sides.
- 2 x sofas (2-4 seaters) with a seat height of 400mm
- Central ceiling pendant and 2 No. table lamps.
- 40" TV and DVD player.



Kitchen



- Doorway from hallway is ...mm wide.
- The worktops are 910mm high.
- Central island which is 940mm high with 4 No. bar chairs which have a seat height of 730mm from the floor level.
- Kitchen includes a built-under double oven, ceramic hob, dishwasher, washing machine, 70:30 split fridge-freezer and microwave.
- 2 No. ceiling mounted light fittings and under cupboard lighting.

Dining Room

- Doorway to Dining Room ismm wide and is a fire door with self closer mechanism.
- Double aspect room with views over garden on one side and towards Calke Park on the other.
- Dining Table with 6 No. dining chairs with seat height of 490mm. None of the chairs have arm rests.
- 2 No. ceiling pendants and 3 No. table lamps.
- CD/Radio with Ipod docking port



FIRST FLOOR

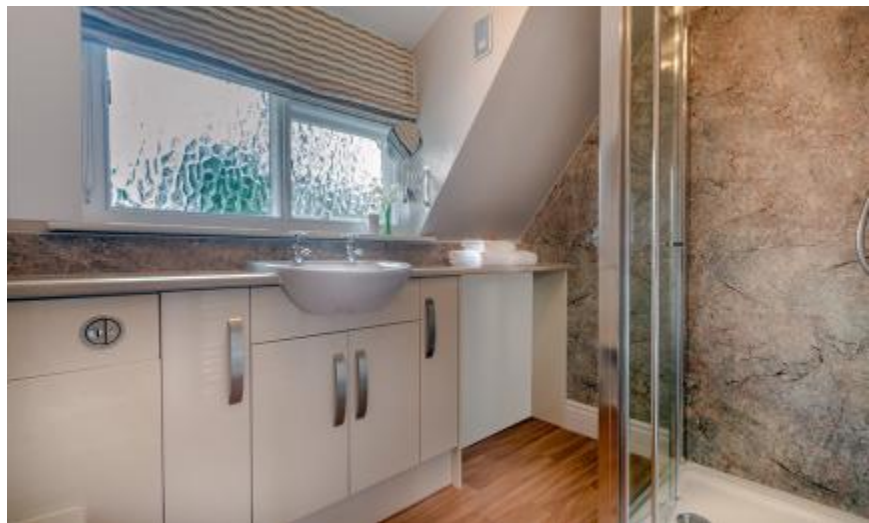
Bedroom 1 (Double Bedroom)



- Spacious bedroom with dual aspect with views over the garden and towards Calke Abbey parkland.
- Door into bedroom is 740mm wide
- Wooden sleigh bed - 2230mm long x 1630mm wide x 570mm high
- Bedside lights and central ceiling pendant light.
- 1 No. double wardrobe, chest of drawers, dressing table mirror. Dressing table stool 440mm high.
- 1 No. Snuggle Chair with seat height of 440mm.

Shower Room

- Door into shower room is 740mm wide
- This is a reasonably spacious room with good circulation space and a vinyl covered floor
- Shower cubicle (1200mm x 1200mm) basin and lavatory.
- Step up into shower of 90 mm high
- The shower area has a shower which runs off the combi boiler with flexible hose. The controls are at 1200mm from floor level (ffl)
- The riser rail extends from 1400mm – 2000mm ffl
- There is a wash-hand basin at 940mm to the rim ffl.



Bedroom 2 (Double Bedroom)



- Spacious bedroom with single aspect towards Calke Abbey parkland.
- Door into bedroom is 740mm wide
- Feature bed - 2130mm long x 1500mm wide x 570mm high
- Bedside lights and central ceiling pendant light.
- 1 No. double wardrobe and wall mounted mirror.

Bedroom 2 (Twin Bedroom)



- Single aspect bedroom
- Door into bedroom is 740mm wide
- Twin beds measuring 1000mm wide x 1900mm long x 570mm high
- Ceiling pendant light and 1 No. table lamp
- Built-in cupboard with hanging rail.
- Wall mounted mirror.
- Chest of Drawers located outside bedroom door on landing.

Family Bathroom

- Spacious family bathroom with P shaped bath with shower over, WC and wash-hand basin. Door into room is 740mm wide.
- Vinyl covered floor.
- WC seat is 400mm high ffl.
- The shower runs off the combi boiler with flexible hose. The controls are at 1160mm from floor level (ffl)
- The riser rail extends from 1540mm – 2150mm ffl
- The wash-hand basin is at 940mm from floor level to the rim.



Garden

- Private garden to rear and side of cottage, level and mainly laid to grass.
- Rattan effect table with 6 No. chairs with seat height of 440mm, backrest and arm rests.
- Garden Bench with a seat height of 470mm.

Additional Information

- Assistance dogs are welcome at all our cottages
- In the event of a fire, it is the responsibility of the guests to evacuate themselves. Vibrating fire/smoke detectors are available if requested at time of booking. Please contact us if you have any other specific access requirements in this respect.

Facilities at all cottages

The National Trust aims to expand the list of accessible /equipment/items available at each cottage and these may include

- Cordless kettle
- Hollowfibre bedding
- Good reading light
- Large handle vegetable peeler
- Easy tin opener
- Non-slip mat for bath/shower
- Non-slip place mat
- Easy jar opener
- Information in alternative formats (on request)

Please note that we cannot guarantee that all items will be available at the time of your visit. Please enquire at the time of booking regarding any particular requests.

Specialist equipment

Other specialist equipment such as wheelchairs, bath seats, toilet frames etc may be available for loan or purchase from the local Red Cross loan centre. Please check this out before booking the Cottage and contact us if you require further information.

<http://www.redcross.org.uk/standard.asp?id=89425>

Future Plans to improve Access to NT Holiday Cottages

We are currently in the process of writing accessibility guides for all our holiday cottages and improving access over time for all our guests. All feedback is very helpful in informing us of ways in which we can improve access to all our cottages. We welcome any comments or ideas from you about access at this cottage and thank you for taking the time to do this. Please do this in the most convenient way for you. See contact details below or information on website.

About the Accessibility Guide

This Accessibility Guide is intended to provide key information about the cottage that may be particularly relevant to guests with disabilities. It is reviewed annually. Please contact us prior to booking if you would like more detailed information and we will be happy to oblige.

Phone: 0344 800 2070

Email: cottages@nationaltrust.org.uk



Access for All at the National Trust

We continue to work to improve accessibility at all our holiday cottages. We welcome comments and ideas on improving access.

Phone: 01793 818531

Email: cottages@nationaltrust.org.uk

Date: July 2017