

National Trust Cottages Access Statement

The Lodge
Greenway
Brixham
Devon
Ref: 012035



Introduction

- The Lodge at Greenway is a single storey cottage which stands at the entrance of the drive down to the house and gardens at Greenway. It is located in an elevated and secluded position above the River Dart with easy access into Greenway garden.
 - The cottage has three internal steps but is otherwise on one level
 - The cottage has night storage heaters in all rooms and a multi-fuel stove in the sitting room
- The cottage is arranged as follows:
- Kitchen/dining room, double bedroom, step down to bathroom with shower over bath and sitting room with French doors leading to sheltered patio area.

Pre-Arrival

- See the main webpage for booking and location details.
- Please contact us prior to booking if you have any specific access requirements.
- Directions provided with booking
- Please bring torch if arriving in dark, as there are no streetlights here and the numbers on the keysafe are small and may be difficult to see.

Approach

- The approach to the cottage is along a narrow winding country lane from the main road, following the National Trust signs for Greenway.
- The cottage is clearly visible on approach from this lane as it stands at the entrance to Greenway.
- If the gates to Greenway are closed, the approach is via the staff car park further down the hill. See pre-visit directions.

Arrival & Parking Facilities



- Guests can stop temporarily on the drive immediately outside the cottage to unload. This area is level.
- Parking is available in the main visitor car park past the cottage on the left of the drive up a steep slope. The drive and car park have a tarmac surface.
- The keysafe is outside the French windows which are accessed via the side path, 3 steps down and 3 steps up
- The keysafe is located on the wall to the left of the white electricity meter box on the right of the French windows (as facing in).

Getting in (and out) of the cottage



- The front door is about four paces from the drive.
- There is a very slight dip in the ground level off the drive and then up onto the stone paving immediately outside the front door.

- The front door is 720mm wide with a 60mm high wooden threshold which is 70mm high from the inside.
- The front door leads straight into the kitchen/dining room.

Getting around the cottage



2 steps down from kitchen Step up from sitting room

Steps onto patio

- Level flagstone flooring in the kitchen/dining room
- Wooden floorboards with loose bedside rugs in the bedroom
- Linoleum floor in the bathroom
- Fitted coir carpet in the sitting room and short passageway leading to it
- Two steps (160mm & 130mm) down from kitchen/dining room to passageway to bathroom and sitting room
- One 775mm high step down from this passageway to the sitting room
- This short passageway is 860mm wide
- Width of internal doors ranges from 700-790mm
- Circulation space in the bedrooms, sitting room and kitchen/dining room is good.
- Steps down to patio from side path and from sitting room

Kitchen/Dining Room



- This is a spacious area directly within the front door.
- The kitchen area has fitted units with cooker and electric hob, butler sink, fridge freezer with freezer compartment, microwave and toaster. Height of worktop is 925mm
- Wooden dining table is 680mm high with clear kneespace of 660mm underneath
- The chairs are wooden with wooden backrest and upholstered seats. The seat height is 490mm
- Spot lighting in the cooker hood and in the ceiling.

Double Bedroom



- Located to left of front door as entering the cottage.
- Doorway is 790mm wide
- Double bed 680mm high x 2000mm long x 1500mm wide. 370mm high space under bed.
- Bedside chest of drawers/table with table lamp either side
- Antique wooden wardrobe, small chest of drawers and two upright chairs

Bathroom passageway

- 2 steps (160mm and 130mm) down from kitchen/dining room

Bathroom



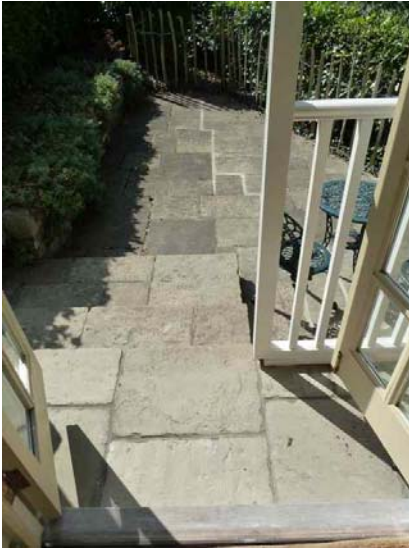
- Bathroom comprises lavatory, basin and bath with shower over bath
- Bathroom door is 700mm wide
- The bath is 1670mm long x 680mm wide x 540mm high
- The WC is 410mm high
- The basin is 820mm high (to the rim)
- Mirror over basin and shaver point to side of basin
- Electric shower and fitted glass shower screen

Sitting Room



- Door has 710mm clear opening width
- 170mm step down into sitting room
- 2-seater sofa 430mm with 430mm seat height (is also a sofa bed) and one wing-backed armchair with seat height of 430mm
- Wall lights, reading lamp and one standard lamp
- Multi-fuel stove
- French windows with total opening width of 1100mm out to steps down to patio.
- 4 steps down to patio – (2 x 160mm high and 2 x 180mm high)

Garden



- Small paved sheltered patio area 4 steps down from sitting room or 4 steps down from side path
- Small cast iron round table 625mm high with two cast iron chairs
- Area sheltered by hedging
- Easy access to Greenway garden from drive. Map of more accessible routes around Greenway garden available from the property. There are also steep paths down to the river.

Additional Information

- Assistance dogs are welcome at all our cottages
- In the event of a fire, it is the responsibility of the guests to evacuate themselves. Vibrating fire/smoke detectors are available if requested at time of booking. Please contact us if you have any other specific access requirements in this respect.

Facilities at all cottages

The National Trust aims to expand the list of accessible /equipment/items available at each cottage and these may include

- Cordless kettle
- Hollowfibre bedding
- Chair with armrests
- Good reading light
- Large handle vegetable peeler
- Easy tin opener
- Non-slip mat for bath/shower
- Non-slip place mat
- Easy jar opener
- Information in alternative formats (on request)

Please note that we cannot guarantee that all items will be available at the time of your visit. Please enquire at the time of booking regarding any particular requests.



Specialist equipment

Other specialist equipment such as wheelchairs, bath seats, toilet frames etc may be available for loan or purchase from the local Red Cross loan centre. Please check this out before booking the Cottage and contact us if you require further information.

<http://www.redcross.org.uk/standard.asp?id=89425>

Future Plans to improve Access to NT Holiday Cottages

We are currently in the process of writing access statements for all our holiday cottages and improving access over time for all our guests. All feedback is very helpful in informing us of ways in which we can improve access to all our cottages. We welcome any comments or ideas from you about access at this cottage and thank you for taking the time to do this. Please do this in the most convenient way for you. See contact details below or information on website.

About the Access Statement

This Access Statement is intended to provide key information about the cottage that may be particularly relevant to guests with disabilities. It is reviewed annually. Please contact us prior to booking if you would like more detailed information and we will be happy to oblige.

Phone: 0844 800 2070

Email: cottages@nationaltrust.org.uk

Access for All at the National Trust

We continue to work to improve accessibility at all our holiday cottages. We welcome comments and ideas on improving access.

Phone: 0844 800 2070

Email: cottages@nationaltrust.org.uk

March 2012