

National Trust Cottages Accessibility Guide

The Oast House (006016)
Whitbourne
Worcestershire
WR6 5SH



Introduction

- This is a 18th century brick-built house on the grounds of Brockhampton Estate and still has its former hop kilns in place
- The cottage lies in undulating landscape and is approached via a narrow country lane

The Cottage is arranged as follows:

Ground Floor:

- Hall, sitting room, dining room, kitchen, utility room and bathroom

First Floor:

- One double bedroom, twin bedroom, single bedroom and bathroom

Second Floor:

- Double bedroom with single bedroom adjoining and another double bedroom

Pre-Arrival

- See the main webpage for booking and location details.
- Please contact us prior to booking if you have any specific access requirements.
- Directions provided with booking



Arrival & Parking Facilities

- Access is down narrow country lanes, there is a private farm gate to open to the house.
- There is a large hard standing area for parking outside the front of the house for many cars.
- The front door is enclosed by a picket fence and flower beds. There is a small gate to go through which is 900mm wide and there is a small step 120mm high.



Getting in (and out) of the cottage



- The front door is 840mm wide, and there is a step up into the house that is 90mm high onto a quarry tiled threshold
- The front door has a porch with light above it, the switch for the light is next to the door.
- The key safe is to the right of the front door, inside the porch. It is a coded key safe that you role the numbers to the correct combination then press the black switch down to open the safe.
- There is a back door in the kitchen; it is 950mm wide with a small step down outside which is 60mm high. This leads to the side passage, then you can exit through the red glass door which is 800mm wide.

Getting around the cottage

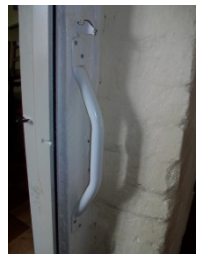
Ground floor:

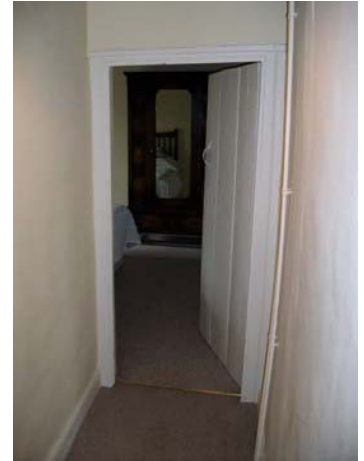


- Internal doors are 700mm -900mm wide on the ground floor.
- The floor is tiled through the hallway, leading on through to the dining room, kitchen and utility room.
- The kitchen is off the dining room, there are two steps down to the kitchen, the tallest being 200mm. There is a handrail on the side



- The utility room leads off the kitchen and is on the same level.
- The living room is carpeted and directly off the front hall.
- The hall is divided by a door, to which the back hall is carpeted with a writing desk and then there is the bathroom connected with vinyl flooring.
- There is a door which opens to the stair way which is carpeted, the width is 750mm, there are 12 steps, the tallest being 190mm. The staircase goes up in a U shape, but does not have any narrow steps. There is a handrail all the way up.





First floor:

- Internal doors are 700mm -770mm wide on the first floor.
- The landing is also carpeted, has a doorway to the double bedroom, then open corridor to twin bedroom and single bedroom all on one level
- Bathroom also comes off landing with original floorboards
- There is a door to another set of stairs that are carpeted, the width is 700mm and the tallest step is 200mm. Again these stairs go up in a U shape, but does not have any narrow steps. There is a handrail all the way up.
- Due to the stairs going to the attic rooms, the ceiling curves down at the top, so guests are advised to mind their head as they go up the top part of the stairs.



Second floor:

- Internal doors are 730mm -870mm wide on the second floor.
- The landing and bedrooms are all carpeted. The two double bedrooms come off the landing, and then there is another door in the large double bedroom that leads to a single bedroom.



Dining Room

- The dining table is 2450mm long by 1120mm wide and is 780mm high
- There are 12 dining room chairs, all with backrests. The chair seat height is 480mm



Kitchen

- Height of worktop is 910mm
- The kitchen has an island unit / breakfast bar
- There is an electric range master cooker
- Microwave, full length fridge, dishwasher, cordless kettle and toaster



Utility Room

- Washing machine, dryer, and two under counter freezers

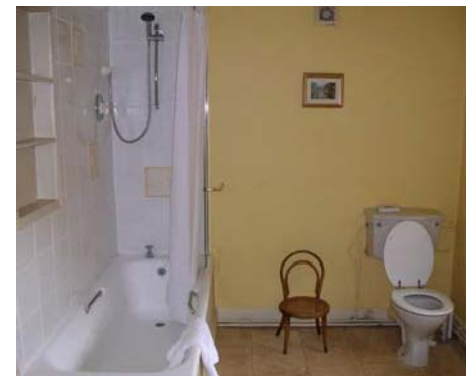


Sitting Room

- Two large sofa's with seat height of 440mm
- Three armchairs all with armrests, and a seat height of between 390mm and 440mm
- Television with DVD player

Ground Floor Bathroom

- WC, basin and shower over bath
- The WC is 420mm high
- The sink is 820mm high
 - The bath is a L shaped shower bath and is 550mm from the floor, the bath is 1470mm long at the top and 540mm wide at the end. The bath has a depth of approximately 380mm.



Back Hallway Area

- Writing desk is 750mm high. The chair has a seat height of 470mm

First Floor Double Bedroom

- Double bed with 5ft (1500mm) wide mattress
- Bed height 600mm
- Very large room with ample space



First Floor Twin Bedroom

- Two single beds
- Mattresses 3ft (900mm) wide
- Bed height 560mm
- The smallest space around either bed is 550mm



First Floor Single Bedroom

- One bed with mattress 3ft (900mm) wide
- Bed height 470mm



First Floor Bathroom



- WC, basin, bath and separate walk in shower
- The WC is 440mm high
- The sink is 790mm high
- The roll top bath is 580mm from the floor; the length is 1500mm at the top and 500mm wide at its narrowest point. The bath is 500mm deep.
- The shower has a small step up into it, 100mm high.



Second Floor Double Bedroom

- Double bed with 5ft (1500mm) wide mattress
- Bed height 680mm
- Due to the situation of the room being in the attic area, the ceilings are all different heights and levels





Second Floor Larger Double Bedroom

- Double bed with 5ft (1500mm) wide mattress
- Bed height 570mm
- Very large room with ample space
- There are large beams coming from the ceiling that do break up the room.
- Due to the situation of the room being in the attic area, the ceilings are all different heights and levels.

Second Floor Single Bedroom

- One bed with mattress 3ft (900mm) wide
- Bed height 700mm
- Due to the situation of the room being in the attic area, the ceilings are all different heights and levels



Garden

- Large garden area around the front of the property, all on one level with two picnic benches
- Enclosed small garden at the rear of the property.
- Picnic bench height is 740mm and seat height is 460mm

Additional Information

- Assistance dogs are welcome at all our cottages
- In the event of a fire, it is the responsibility of the guests to evacuate themselves. Vibrating fire/smoke detectors are available if requested at time of booking. Please contact us if you have any other specific access requirements in this respect.



Facilities at all cottages

The National Trust aims to expand the list of accessible /equipment/items available at each cottage and these may include

- Cordless kettle
- Hollow fiber bedding
- Chair with armrests
- Good reading light
- Non-slip mat for bath/shower
- Non-slip place mat
- Information in alternative formats (on request)

Please note that we cannot guarantee that all items will be available at the time of your visit. Please enquire at the time of booking regarding any particular requests.

Specialist equipment

Other specialist equipment such as wheelchairs, bath seats, toilet frames etc may be available for loan or purchase from the local Red Cross loan centre. Please check this out before booking the Cottage and contact us if you require further information.

<http://www.redcross.org.uk/standard.asp?id=89425>

Future Plans to improve Access to NT Holiday Cottages

- We are currently in the process of writing accessibility guides for all our holiday cottages and improving access over time for all our guests. All feedback is very helpful in informing us of ways in which we can improve access to all our cottages. We welcome any comments or ideas from you about access at this cottage and thank you for taking the time to do this. Please do this in the most convenient way for you. See contact details below or information on website.

About the Accessibility Guide

- This accessibility guide is intended to provide key information about the cottage that may be particularly relevant to guests with disabilities. Please contact us prior to booking if you would like information that is more specific and we will be happy to oblige.
Email: cottages@nationaltrust.org.uk
Phone: 0344 8002070

Access for All at the National Trust

- The Access for All office works to improve access at all National Trust cottages and properties. The office welcomes comments and ideas on improving access.
Phone: 01793 818531
Email: accessforall@nationaltrust.org.uk

Date: May 2017