

## National Trust Cottages Accessibility Guide

The Watchtower  
Paignton  
Devon



Property Ref: 012004

### Introduction

The property is a three-storey building is built into the curtain wall of Compton Castle.

Sleeps up to 2 people in 1 bedroom and arranged over 3 floors. The staircases to each floor are narrow and steep.

The property has night storage heating and an electric wood burner effect fire.

The Cottage is arranged as follows:

#### Ground floor

Bathroom with shower over bath, separate lavatory, steep stairs leading to first floor.

#### First floor

1 double bedroom with 4' 6" bed, and steep narrow stairs leading to second floor.

#### Second floor

Second floor: open-plan kitchen/dining/sitting room.

### Pre-Arrival

- See the main webpage for booking and location details.
- Please contact us prior to booking if you have any specific access requirements.
- Directions provided with booking

## Approach

The property is approached by country lanes, sometimes narrow and with passing places

## Arrival & Parking Facilities

- Parking is at the front of the castle to the side of the entrance drive up a curb stone and on grass approximately 100metres from the property
- It is possible get closer to the castle courtyard entrance and unload on the gravelled area in front of the castle gate
- Key box with dial combination lock, height 1340mm opposite the gate on the wall
- Wooden castle gate, width 930mm
- Level paved path width 600mm, flanked by level lawn, path length approx. 50 metres
- There is outside lighting by the front door but if arriving after dark it is advisable to have a torch



## Getting in (and out) of the cottage

- Half glazed front door, width 750mm, height 1780mm
- Leads into the hallway with flagstone floor, width 1050mm
- Limited natural light and 2 pendant lights
- Rubber backed mat
- Coat hooks, height 1700mm



## Getting around the cottage

### Ground floor:

#### Hallway

- Limited natural light, 2 pendant lights
- Rubber backed mat
- Coat hooks, height 1700mm
- Hall width minimum 1050mm



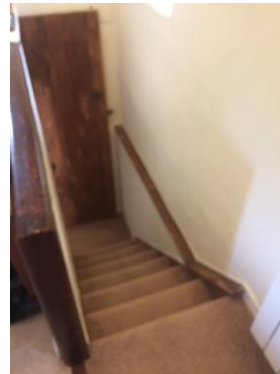
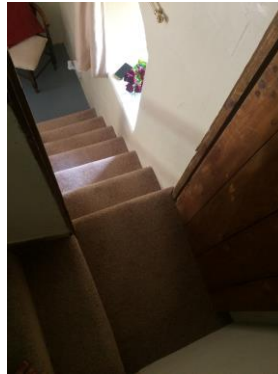
### First floor:

- Half turn straight stairs with split mid landing area with a dividing step, height 180mm
- Landing areas 550mm by 590mm, and 590mm by 590mm
- Stairs with a step height of 180mm, tread 220mm, narrow width of 590mm
- Rope banister to the left when ascending
- Pair of wall lights, no windows
- Carpet



## 2<sup>nd</sup> floor:

- Stairs to second floor, half turn straight stairs with mid landing area, 520mm by 720mm
- Door at the mid landing area, width 520mm, height 2030mm
- Step height 180mm, tread 230mm, first flight width 680mm narrowing to 570mm, second flight width 610mm narrowing to 590mm
- Lighting from rooms and 2 x windows
- Wooden banister on first flight, wooden shelf on second flight.
- Carpet



## Ground floor:

### Bathroom

- Door width 710mm, height 1880mm level threshold
- Linoleum floor
- Sink, bath with electric shower over
- Bath height 540mm with washer twist taps and grab handles and rubber bath mat
- Pivoted shower screen, shower controls height 1620mm, detachable shower head
- Sink height 820mm with washer twist taps
- Shaver socket height 1800mm
- Ceiling light, window over castle courtyard and entrance path
- Circulation around the bath 960mm



## Toilet

- Door width 730mm, height 1980mm
- Linoleum floor
- Toilet height 410mm, push flush
- Ceiling light, no window
- Circulation 720mm by 700mm

## First Floor:

### Double Bedroom

- Door width 560mm, height 1920mm from top of stairs
- Painted stone floor with large carpet rug
- Double divan bed width 1500mm, length 2000mm, height 600mm
- 2 x side tables, 3 table lamps with under lampshade on/off switches, 1 pair of wall lights
- Dual aspect windows, views over castle courtyard and orchard, arrow slit window over the front entrance path
- Stairs and window at far end of room
- Chest of drawers, hanging rail, height 1740mm
- Window seat height 520mm
- Wooden chair, seat height 410mm
- Good circulation at the sides and end of the bed. Minimum width between door and the bed 530mm



## 2<sup>nd</sup> Floor:

### Open plan living room and kitchen

- Carpet with linoleum in the kitchen area
- Electric wood burner effect fire
- 1 x 2 seater settee, seat height 420mm
- 5 x windows with views over castle grounds and countryside
- 2 x ceiling spotlights, 2 x pairs of wall lights 1 table lamp with on/off switch under the lampshade
- Kitchen table height 730mm, clearance underneath 590mm
- 1 x wooden chair, seat height 450mm,
- 1 x wooden chair with rush seat, seat height 430mm
- Height of kitchen worktop 900mm
- Fitted kitchen with electric double oven and ceramic hob, under counter fridge with freezer box, microwave
- Sink, mixer twist taps with washers



## Garden

Access via the front door to castle grounds

## Additional Information

- Assistance dogs are welcome at all our cottages
- In the event of a fire, it is the responsibility of the guests to evacuate themselves. Vibrating fire/smoke detectors are available if requested at time of booking. Please contact us if you have any other specific access requirements in this respect.



## Facilities at all cottages

The National Trust aims to expand the list of accessible /equipment/items available at each cottage and these may include

- Cordless kettle
- Hollowfibre bedding
- Chair with armrests
- Good reading light
- Large handle vegetable peeler
- Easy tin opener
- Non-slip mat for bath/shower
- Non-slip place mat
- Easy jar opener
- Information in alternative formats (on request)

Please note that we cannot guarantee that all items will be available at the time of your visit. Please enquire at the time of booking regarding any particular requests.

## Specialist equipment

Other specialist equipment such as wheelchairs, bath seats, toilet frames etc may be available for loan or purchase from the local Red Cross loan centre. Please check this out before booking the Cottage and contact us if you require further information.

<http://www.redcross.org.uk/standard.asp?id=89425>

## Future Plans to improve Accessibility to National Trust Holiday Cottages

We are currently in the process of writing accessibility guides for all our holiday cottages and improving access over time for all our guests. All feedback is very helpful in informing us of ways in which we can improve access to all our cottages. We welcome any comments or ideas from you about access at this cottage and thank you for taking the time to do this. Please do this in the most convenient way for you. See contact details below or information on website.

## About the Accessibility Guide

This Accessibility Guide is intended to provide key information about the cottage that may be particularly relevant to guests with disabilities. It is reviewed annually. Please contact us prior to booking if you would like more detailed information and we will be happy to oblige.

Phone: 0344 800 2070

Email: [cottages@nationaltrust.org.uk](mailto:cottages@nationaltrust.org.uk)

## Access for All at the National Trust

We continue to work to improve accessibility at all our holiday cottages. We welcome comments and ideas on improving access.

Phone: 0344 800 2070

Email: [cottages@nationaltrust.org.uk](mailto:cottages@nationaltrust.org.uk)

Date 13 July 2018