

National Trust Cottages Accessibility Guide

Thorington Lodge, Stoke-by-Nayland, ref. 010056

Introduction

- Thorington Lodge is a single storey semi-detached former gate lodge
- Timber-framed with plastered walls and tiled roof
- Sleeps three in two bedrooms
- One bathroom with shower over bath
- Wood burner
- Two small courtyards and private grassed river-side seating area
- There are two steps down into the cottage and one step up from the breakfast area to the kitchen



© National Trust / Mike Henton

** Please note that all door widths given indicate the clearance required for access*

The lodge is arranged as follows:

Ground Floor:

- Front door leads straight into sitting room off which is the kitchen with breakfast area and an inner corridor giving access to the bathroom, single and double bedrooms and the inner courtyard

Pre-Arrival

- See the main webpage for booking and location details
- Please contact us prior to booking if you have any specific access requirements
- Directions provided with booking
- Please bring a torch if arriving in the dark as there are no streetlights here

Approach

- The cottage is located by the main road through the village, but is accessed via a small single track lane
- White wooden gates are marked 'Thorington Hall & Thorington Lodge' and there is a further wooden gate separating the Lodge (first on left) from the Hall (straight ahead)
- There is a stream nearby

Arrival & Parking Facilities

- There is a gravel area in front of the cottage for one car
- A paved area leads from the gravel car park to the front door step
- The keysafe is to the right of the front door



Thorington Hall from the junction of the main road and the side lane



Front door with keysafe to right



Outer entrance gates to gravel drive



Steps down to sitting room



Parking area / front courtyard

Getting in (and out) of the cottage

- The wooden front door is 770mm wide and 1.84m high
- There is a stone step down 150mm, then another 150mm to the pavement floor
- Opens into the sitting room

Getting around the cottage

Sitting room:

- One two-seater fabric sofa: seat height 480mm; seat back height 560mm
- One fabric armchair: seat height 460mm; seat back height 500mm
- Wood-burner in fireplace; hearth 30mm up

National Trust

- Four wooden side tables: heights 740, 540, 540 & 530mm
- Cabinet 960mm high, containing television & DVD player on shelf 430mm high
- Drop-leaf wooden table with table lamp: surface 710mm high
- Two wooden chairs with cushioned seats and backs; seat height 490mm; seat back 430mm
- Shelf 1.33m high bearing books
- Double height ceiling
- Two pendant lights, one table lamp (mentioned above) and one floor lamp
- Two windows facing west (one at high level) over parking area / front courtyard; one window facing north towards outbuildings across the drive; one south to inner courtyard
- Pamment floor plus one rug



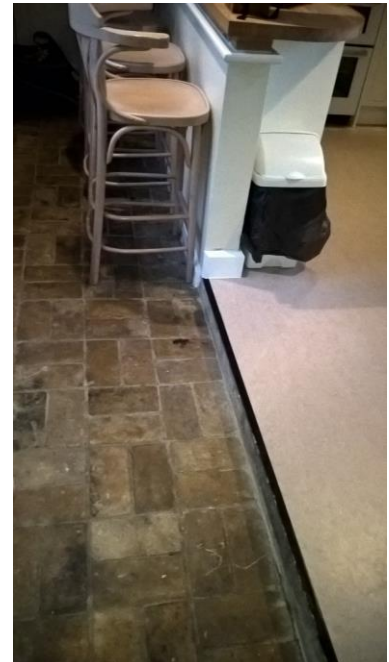
Sitting area with inner corridor ahead and kitchen door to right



Sitting room



Kitchen with breakfast area to left



Step up from breakfast area to kitchen

Kitchen / breakfast area:

- Door: 740mm wide; 1.84m high; wooden threshold 10mm down to pamment area
- Step up from breakfast to kitchen area: 90mm high
- Ground level & wall mounted units (the latter 410mm above worktop)
- Worktop height: 930mm
- Breakfast bar: 1m high
- Three wooden bar chairs with arms: seat height 690mm; seat back 330mm
- 'Stoves' oven & hob, microwave, dishwasher, toaster, kettle & fridge with ice compartment
- Mixer tap with lever handles
- Three pendant lights; hood light over hob
- Windows looking west over parking area / front courtyard and east over inner courtyard
- Pamment floor in breakfast area; lino in kitchen

Inner hall

- Door: 710mm wide; 1.86m high; wooden threshold 90mm down

- Pendant light
- Carpeted and rug

Bathroom

- Door: 700mm wide, 1.94m high; wooden threshold, then 20mm down
- P-shaped bath: 540mm high; 560mm minimum internal width; lever taps & shower attachment over end of bath; curved glass pivot shower screen
- Wall-mounted cabinet: base 1.27m high from floor
- Small counter top height: 830mm
- In-set basin height: 860mm
- Lever taps
- Toilet seat height: 430mm
- Pendant ceiling light
- Window facing north across the drive to outbuildings
- Lino floor



Bathroom



Single bedroom



King size bedroom

Single bedroom

- Door: 710mm wide, 1.94m high; wooden threshold 10mm
- Single metal-framed bed: 660mm high
- One bedside cupboard with table lamp: 710mm high to surface
- Mirror-topped chest of drawers: 900mm high to surface
- Wooden chair: 440mm seat height; 380mm back height
- Locked trunk: 500mm high
- Pendant ceiling light

- Window facing north across the drive to outbuildings
- Carpeted floor with rug

King size bedroom

- Door: 700mm wide; 1m94 high; wooden threshold: 10mm up and down
- King size metal-framed bed: 620mm high
- Two bedside tables each with one table lamp: 580mm high to surface
- Mirror-topped chest of drawers: 940mm high
- Wooden chair: 440mm seat height; 380mm back height
- Wardrobe: 1.88m high; 910mm wide
- Pendant ceiling light
- Window facing east across lane to river and fields
- Carpeted floor with one rug

Outside

- **Front courtyard** paved in slightly uneven flagstones leading to gravel **parking area** bordered by beds containing small shrubs and flowers:
 - Rectangular metal tray table: 630mm kneespace
 - Two metal fretwork chairs: seat height 420mm; seat back 530mm high
 - Outside wall light
 - Willow fence separating Lodge from Hall
- **Inner courtyard:**
 - Door from inner hall: 1m wide; 1.78m high; wooden threshold 30mm down to concrete slope leading to brick courtyard
 - Round metal table: 710mm high
 - Two metal chairs: seat height 400mm; seat back 530mm
 - Outside wall light
- **Outbuildings**, the left-hand of which houses the general waste, recycling & glass bins plus the wood store
- **Riverside seating area:**
 - Wooden bench: seat height 400mm; seat back 410mm



Riverside seating area



Outbuilding for refuse storage

Additional Information

- Assistance dogs are welcome at all our cottages



- In the event of a fire, it is the responsibility of the guests to evacuate themselves. Vibrating fire / smoke detectors are available if requested at time of booking. Please contact us if you have any other specific access requirements in this respect.

Facilities at all cottages

The National Trust aims to expand the list of accessible /equipment/items available at each cottage and these may include:

- Cordless kettle
- Hollowfibre bedding
- Chair with armrests
- Good reading light
- Large handle vegetable peeler
- Easy tin opener
- Non-slip mat for bath/shower
- Non-slip place mat
- Easy jar opener
- Information in alternative formats (on request)

Please note that we cannot guarantee that all items will be available at the time of your visit.

Please enquire at the time of booking regarding any particular requests.

Specialist equipment

Other specialist equipment such as wheelchairs, bath seats, toilet frames etc may be available for loan or purchase from the local Red Cross loan centre. Please check this out before booking the cottage and contact us if you require further information.

<http://www.redcross.org.uk/standard.asp?id=89425>

Future Plans to improve Access to National Trust Holiday Cottages

We are currently in the process of writing accessibility guides for all our holiday cottages and improving access over time for all our guests. All feedback is very helpful in informing us of ways in which we can improve access to all our cottages. We welcome any comments or ideas from you about access at this cottage and thank you for taking the time to do this. Please do this in the most convenient way for you. See contact details below or information on website.

About the Accessibility Guides

This Accessibility Guide is intended to provide key information about the cottage that may be particularly relevant to guests with disabilities. It is reviewed annually. Please contact us prior to booking if you would like more detailed information and we will be happy to oblige.

Phone: 0844 800 2070

Email: cottages@nationaltrust.org.uk

Access for All at the National Trust

- The Access for All office works to improve access at all National Trust accommodation and properties. The office welcomes comments and ideas on improving access.

Phone: 01793 818531

Email: accessforall@nationaltrust.org.uk



November 2016