

Cottage Ref: 011046

Townplace

Cadgwith

THE LIZARD

Cornwall

**Introduction**

- Part of the former Inglewidden farm complex, Townplace is a traditional stone built, detached, farm building converted into a single storey holiday cottage. The South West Coast Path runs past the front of the cottage. The natural phenomenon “The Devils Frying Pan” is only 100metres away. It is a sea cave where the roof has collapsed leaving a natural bridge between two cliffs.

- The Cottage is arranged as follows:

Ground Floor:

- Hall, Lounge/Dining room, Kitchen, Bathroom and Double bedroom.

Pre-Arrival

- See the main webpage for booking and location details.
- Please contact us prior to booking if you have any specific access requirements.
- Directions provided with booking

Arrival & Parking Facilities

- The cottage is off the main road to Cadgwith, down a single lane roadway. There are many twists and turns but also a good number of passing places. The parking area is a grassed one on the far side of the cottage.



Getting in (and out) of the cottage

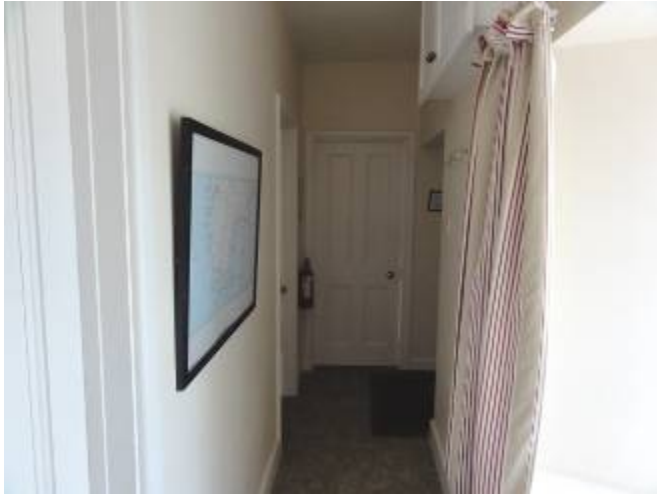
- The wide, compacted earth, path from the parking area to the front door is literally part of the SW Coastal path. It continues along to the side access to the rear garden. The combination key safe for the front door is on the wall to the right of the door.
- There is an outside light but it is recommended to bring a torch to set the correct lock combination on arrival. Keys to be returned to safe on final departure.
- There is one (140mm H x 1,060mm D) stone step and one (200mm H) granite step up to front door which is 1,030mm wide and opens inwards.

Getting around the cottage

Ground floor:

- Front door opens into narrow hallway which runs along the front of cottage. There are four solid wooden doors off.
- One door to Lounge/Dining room, one to Bathroom, one to Kitchen and one to Double bedroom. All open inwards.

Entrance Hallway – Single aspect.



- Solid wooden front door, 1,030mm wide, opens inwards into hallway.
- Vinyl flooring in entrance area and changing to fitted carpet further away from front door.
- Ceiling light on 2-way switch.
- Window, with deep sill, to front aspect (970mm W x 1,100mm H).
- Wall mounted coat rack with 4 hooks.

Lounge/Dining room – Triple aspect.



Lounge/Dining room – Cont'd.



- 720mm wide doorway opens inwards from hall.
- Fitted carpet flooring.
- Ceiling light. Pair of table lamps and a standard lamp.
- Night storage heater. Convector heater and an open fire.
- Window, with deep sill, to front aspect (950mm W x 1,100mm H).
- Window, with deep sill, to side aspect (950mm W x 1,100mm H).
- Window, with deep sill, to rear aspect (900mm W x 850mm H).
- Small round, pine, dining table (300mm Dia x 700mm knee H).
- Pair pine "Kitchen" chairs (450mm seat H).
- Wooden side table (790mm W x 460mm D x 750 H).
- Two seater settee (440mm seat H).
- Wing back chair (440mm seat H).
- Wooden storage box (540mm W x 380mm D x 450mm H).
- T.V. DVD player. Radio/CD player.

Kitchen – Single aspect.



- 720mm wide doorway opens inwards from hall.
- Vinyl flooring.
- Six recessed down-lights.
- Window, with deep sill, to rear aspect, (850mm W x 850mm H).
- Floor cupboards and drawers under (940mm H) worktop.
- Wall cupboards (480mm H) above worktop.
- Dishwasher, Washing/Dryer machine, Fridge with ice-box, Micro wave, Toaster and Kettle.
- Electric Cooker with ceramic hob.

Bathroom – Single aspect.



- 720mm wide doorway opens inwards from hall.
- Vinyl flooring.
- Ceiling light. Light above mirror (separate shaver socket).
- Window (frosted glass), with deep sill, to rear aspect (900mm W x 850mm H).
- Electric heated towel rail.
- Bath (660mm W x 1,670mm L x 560mm H). Electric shower over. Safety glass side panel.
- W.C. (410mm seat H).
- Wash basin (800mm H).
- Wooden, cork topped, bathroom stool (310mm W x 400mm D x 470mm H).

Double Bedroom – Dual aspect.



- 720mm wide doorway opens inwards from hall.
- Fitted carpet flooring.
- Ceiling light. Pair of table lamps.
- Night storage heater and Convector heater.
- Window, with deep sill, to front aspect (950mm W x 1,100mm H).
- Window, with deep sill, to side aspect (1,100mm W x 1,100mm H).
- Wooden “Kitchen” chair (450mm seat H).
- Built-in wardrobe (750mm W).
- Chest of four drawers (790mm W x 410mm D x 700mm H).
- Pair of bedside cabinets (each 460mm W x 420mm D x 540mm H)
- Double bed (1,520mm W x 2,000mm L x 700mm H).
- Radio/CD Player

Garden



- Side gate to rear garden. Opens both ways (inwards 1,150mm W – outwards 780mm W).
- Stone path (1,000mm W) along back wall of cottage. Rear grassed lawn slopes gently up from path. Picnic table and rotary dryer on rear lawn.

Additional Information

- Assistance dogs are welcome at all our cottages
- In the event of a fire, it is the responsibility of the guests to evacuate themselves. Vibrating fire/smoke detectors are available if requested at time of booking. Please contact us if you have any other specific access requirements in this respect.

Facilities at all cottages

In addition to the standard equipment and facilities, each cottage is equipped with the following:



- Cordless kettle
- Chair with armrests in dining room and living room.
- Good reading light
- Large handle vegetable peeler
- Easy tin opener
- Non-slip mat for bath/shower
- Non-slip place mat
- Easy jar opener
- Information in alternative formats (on request)

We aim to provide these items in all cottages but please check when booking as to their availability and to check if new items have been added to the list.

Specialist equipment

Other specialist equipment such as wheelchairs, bath seats, toilet frames etc may be available for loan or purchase from the local Red Cross loan centre. Please check this out before booking the Cottage and contact us if you require further information.

<http://www.redcross.org.uk/standard.asp?id=89425>

Future Plans to improve Accessibility to National Trust Holiday Cottages

- We are currently in the process of writing accessibility guides for all our holiday cottages and improving access over time for all our guests. All feedback is very helpful in informing us of ways in which we can improve access to all our cottages. We welcome any comments or ideas from you about access at this cottage and thank you for taking the time to do this. Please do this in the most convenient way for you. See contact details below or information on website.

About the Accessibility Guide

- This Accessibility Guide is intended to provide key information about the cottage that may be particularly relevant to guests with disabilities. Please contact us prior to booking if you would like information that is more specific and we will be happy to oblige.

Email: cottages@nationaltrust.org.uk

Phone: 0344 8002070

Access for All at the National Trust

- The Access for All office works to improve access at all National Trust cottages and properties. The office welcomes comments and ideas on improving access.

Phone: 01793 818531

Email: accessforall@nationaltrust.org.uk

July 2011