

National Trust Cottages Accessibility Guide

WEST GATE LODGE

Introduction

- House for 2 people set in the grounds of Fountains Abbey
- Option for cot
- 1 super king (option to create twin bed format)

The Cottage is arranged as follows:

Ground Floor:

- 4 Rooms and a small WC

First Floor:

- 1 Double Bedroom, Study & walk-through wardrobe, bathroom

Pre-Arrival

- See the main webpage for booking and location details.
- Please contact us prior to booking if you have any specific access requirements.
- Directions provided with booking
-

Approach

- Take the B6265 Pateley Bridge Road from Ripon, following signs for Fountains Abbey and Studley Royal. Take the left turn into Fountains, and follow the road until you reach a roundabout – go straight across and follow sign for West Gate. Upon arrival at West gate, proceed through the main gate and West Gate Lodge is 300 yds on your right.

Arrival & Parking Facilities

- Car parking is at Fountains Hall .
- Before 4pm you can get the keys from the Visitor Centre which is reached by either driving around to the main car park, or walking following Visitor Centre signs.

Getting in (and out) of the cottage

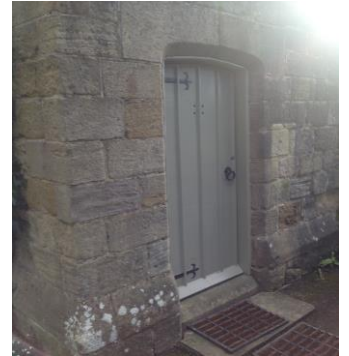
- Entrance to the cottage is on the right side of the house – do not use the main door at the front.

Getting around the cottage

Ground floor:

- Small lobby, with utility room and toilet on your right. Straight ahead to kitchen, and then through to Dining-Room. Across the hall to Sitting room.

First floor:



National Trust

- Top stairs has two doors, the one on your left leads to study. The one of the right to double bedroom. Through study to bathroom. bathroom has two entrances, the other door leads to walk-through wardrobe and then onto double bedroom.

Kitchen

- Height of worktop is 910mm. Cooker has electric hobs and electric oven. Microwave, Dishwasher, Toaster, Kettle & Fridge-Freezer.



Ground floor Toilet

- Basin is 910mm high
- The WC is 420mm high

Sitting Room

- Large Armchair, Double Sofa, Centre chest cum table, TV Cabinet, Small side table and standard lamp.



Dining Room

- Table with 4 chairs – 2 with arms, large armchair, sideboard with lamp, Built-in cupboards
Small table with CD/Radio Player.

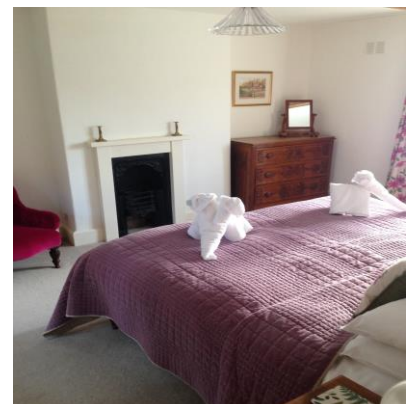


Other Rooms

- Utility Room has tumble dryer and washing machine.
- Study (First Floor) has writing desk, Lamp, Wall shelves and easel
- Bathroom (1st Floor) Large bath, walk-in shower, basin 910mm high and WC 420mm

Double Bedroom

- Super king size bed: 600mm high and 2000mm long
Armchair, Chest of drawers with small mirror
Stand-up mirror in corner, 2 bedside tables with lamps
Fireplace (not used)



Garden

- Gate at the side of the house leads to the skell and private garden outside area. Grass area next to riverbank with wooden seating close to river.

Additional Information

- Assistance dogs are welcome at all our cottages
- In the event of a fire, it is the responsibility of the guests to evacuate themselves. Vibrating fire/smoke detectors are available if requested at time of booking. Please contact us if you have any other specific access requirements in this respect.

Facilities at all cottages

The National Trust aims to expand the list of accessible /equipment/items available at each cottage and these may include

- Chair with armrests
- Non-slip mat for bath/shower

Please note that we cannot guarantee that all items will be available at the time of your visit. Please enquire at the time of booking regarding any particular requests.

Specialist equipment

Other specialist equipment such as wheelchairs, bath seats, toilet frames etc may be available for loan or purchase from the local Red Cross loan centre. Please check this out before booking the Cottage and contact us if you require further information.

<http://www.redcross.org.uk/standard.asp?id=89425>

Future Plans to improve Access to National Trust Holiday Cottages

- We are currently in the process of writing accessibility guides for all our holiday cottages and improving access over time for all our guests. All feedback is very helpful in informing us of ways in which we can improve access to all our cottages. We welcome any comments or ideas from you about access at this cottage and thank you for taking the time to do this. Please do this in the most convenient way for you. See contact details below or information on website.

About the Accessibility Guide

- This Accessibility Guide is intended to provide key information about the cottage that may be particularly relevant to guests with disabilities. Please contact us prior to booking if you would like information that is more specific and we will be happy to oblige.

Email: cottages@nationaltrust.org.uk

Phone: 0344 8002070



Access for All at the National Trust

- The Access for All office works to improve access at all National Trust cottages and properties. The office welcomes comments and ideas on improving access.

Phone: 01793 818531

Email: accessforall@nationaltrust.org.uk

Date February 2018