



# ACTIVATE WRIT IN WATER!



National Trust

In art **the oculus** describes the position of a viewer when looking at a painting, it works as a camera eye.  
In architecture it is an opening in the centre of a dome or a wall that allows rainwater to fall.

Is *Writ in Water* (1) a maze or (2) a labyrinth?  
Place a tick next to the features you discover:

## MAZE

Several branching paths

Dead ends

Several entry points

## LABYRINTH

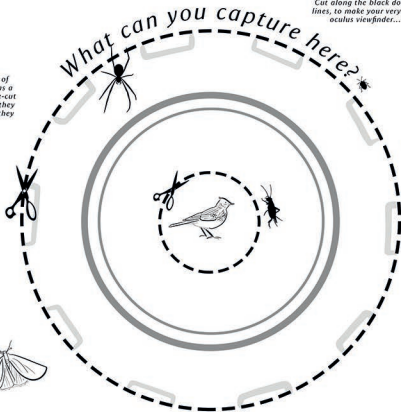
One path

Leads to the centre

Only one exit/entry point

Can you draw your own maze?

*The outer edge of  
*Writ in Water* has a  
pattern of square-cut  
holes... why are they  
there? What do they  
do?*



*Cut along the black dotted  
lines, to make your very own  
oculus viewfinder...*

Spheres of influence - historic buildings  
that inspired *Writ in Water*:

*Can you draw who would live in each?*

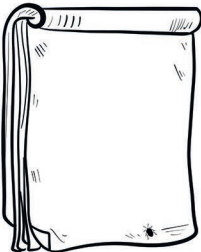
SHELL KEEP CASTLES  
11th CENTURY



THE PANTHEON  
12th CENTURY



RICHARD SERRA, Sculptor  
1970s



## Cubits and labyrinths

*Writ in Water* is built entirely out of  
measures of cubits. Check it out! How many cubits  
can you count along the back wall?

